

Band-Specific High Power Amplifier

Product Name : RCA5259H46D0, Code Name :

Doc. Name : General Spec.

General Specification for RCA5259H46D0

1

RESTRICTION ON USE, DUPLICATION, OR DISCLOSURE OF PROPRIETARY INFORMATION

This document contains proprietary information, which is the sole property of Rfcore co., LTD.

The document is submitted to the recipient for his use only.

By receiving this document the recipient undertakes not to duplicate the documents or to disclose in part of, or the whole of, any of the information contained herein to any third party without receiving before hand, written permission from the submitting company.

Revision history

Revision Code	Author	Date	Engineering Change Order
A	Charlie CHO	3.Jun.2019	- Draft
B	Charlie CHO	13.Jun.2019	- Change weight & dimension, add a requirement for Rain
C	Charlie CHO	2.Sep2019	- Add a mechanical drawing

Created	Printed	Document Number	Revision	Manufacturer
2019/9/2	2020/3/9		C	Rfcore co.,Ltd
File : RCA5259H46D0 General Spec.docx				

The Specifications is subject to change before finalization

Customer Service: Tel. 82-31-708-7575

Email: sales@rfcore.com

<http://www.rfcore.com>

Band-Specific High Power Amplifier

Product Name : RCA5259H46D0, Code Name :

Doc. Name : General Spec.

ELECTRICAL SPECIFICATIONS		@ 50 Ohms load, 28 Vdc, Tc = 35 °C
Parameter	Specification	Remark
Frequency Range	5250 ~ 5850 MHz	
Saturated Output Power	40 W min.	@ CW, 50 ohms load
Small Signal Gain	47 dB min.	Pin = - 15 dBm CW, 50 ohms load
Large Signal Gain	44 dB min.	Pin = 0 dBm CW, 50 ohms load
Small Signal Gain Flatness	Peak to Peak 4 dB	Pin = - 15 dBm CW, 50 ohms load
Large Signal Gain Flatness	Peak to Peak 3 dB	Pin = 0 dBm CW, 50 ohms load
Spurious	Less than - 60 dBc	Non-Harmonics in band
Maximum Input Power for no damage	Short term : 8 dBm (20msec) Long term : 5 dBm	@ CW, 50 ohms load
Input VSWR	Less than 1.5 : 1	
Output VSWR	Less than 2.0 : 1	Built in Isolator
Maximum load VSWR for amplifier survival	Infinite, all phase	
Enable/Disable Switching Time	10 us max.	
DC Input Voltage	28 ± 1 Vdc	
Shutdown Current (I _{sd})	0.35 A max	@ PA disabled, RF OFF
Quiescent Current (I _q)	1.4 A max.	@ PA enabled, RF OFF
Current Consumption (I _{dd})	3.8 A typ. 4.5 A max.	@ Pout = 20W CW, 50 ohms load
Current Consumption (I _{dd})	6 A typ. 7 A max.	@ Pout = 40W CW, 50 ohms load
RF Input Signal Format	CW	

2

Created	Printed	Document Number	Revision	Manufacturer
2019/9/2	2020/3/9		C	RFcore co.,Ltd
File : RCA5259H46D0 General Spec.docx				

The Specifications is subject to change before finalization

Customer Service: Tel. 82-31-708-7575

Email: sales@rfcore.com

http://www.rfcore.com

Band-Specific High Power Amplifier

Product Name : RCA5259H46D0, Code Name :

Doc. Name : General Spec.

Interface Pin Description		
Connector	Description	Specification
I/O Interface (D-Sub 9Pin Male)	1. Enable(Active Low)	Internally pulled-up @ 5V with 10KΩ Does not exceed 25mA Enable : TTL Low or GND Disable : TTL High(3.3-5V) or OPEN
	2. Forward Power Monitor	Logarithmic Detector(≈0.05V/dB)
	3. N.C	
	4. Reflected Power Monitor	Logarithmic Detector(≈0.05V/dB)
	5. Temperature Monitor	$V_T = 10(\text{mV}) * T_c(\text{°C}) + 500(\text{mV})$, $T_c = \text{Case Temperature} \pm 5\text{°C}$
	6. Vcc	
	7. Vcc	
	8. GND	
	9. GND	

Created	Printed	Document Number	Revision	Manufacturer
2019/9/2	2020/3/9		C	RFcore co.,Ltd
File : RCA5259H46D0 General Spec.docx				

The Specifications is subject to change before finalization

Customer Service: Tel. 82-31-708-7575

Email: sales@rfcore.com

<http://www.rfcore.com>

Band-Specific High Power Amplifier

Product Name : RCA5259H46D0, Code Name :

Doc. Name : General Spec.

ENVIRONMENTAL SPECIFICATIONS		Designed to meet MIL-STD 810G & MIL-STD 461E
Parameter	Specification	Remark
Operating Case Temperature	-40 ~ +85 °C	At a hottest point of the mechanical case of amplifier module
Storage Temperature	-40 ~ +85 °C	
Altitude	MIL-STD-810G, Method 500.5 , Procedure I Storage Air Transfer (37,000 ft) , Procedure II Operation (30,000 ft)	2 hours continuous pressurisation + min. 2 hours test
Humidity	MIL-STD-810G, Method 507.5 RH%95 ±%4, 60°C ±3°C max. temp. 30°C ±3°C initial temp.	24 hours x min. 10 cycles
Vibration	MIL-STD-810G Method 514.6 Cat 13 Propeller aircraft Procedure I-General Vibration, Procedure II-Handling,	1 hour test at each axis.
Shock	MIL-STD-810G Method 516.6 Procedure I-Functional Shock Table 516.5-I [40g (20g Shock mounted), 11ms, Saw Tooth], Procedure II- Materiel to be Packaged Procedure IV- Transit Drop	
Rain	MIL-STD-810G Method 506.5 Procedure III-Drip Test	
EMC/EMI	MIL-STD 461E RE102, CE102	

4

MECHANICAL SPECIFICATIONS		
Parameter	Specification	Remark
Dimension	155 * 120 * 28 mm	w/o connectors
Weight	Less than 1150 g	
RF Input Connector	SMA Female	
RF Output Connector	SMA Female	
I/O Interface Connector	Filtered D-Sub 9Pin Male	Capacitor Value : 4700 pF
Cooling	Adequate Heat-sink required	

Created	Printed	Document Number	Revision	Manufacturer
2019/9/2	2020/3/9		C	RFcore co.,Ltd
File : RCA5259H46D0 General Spec.docx				

The Specifications is subject to change before finalization

Customer Service: Tel. 82-31-708-7575

Email: sales@rfcore.com

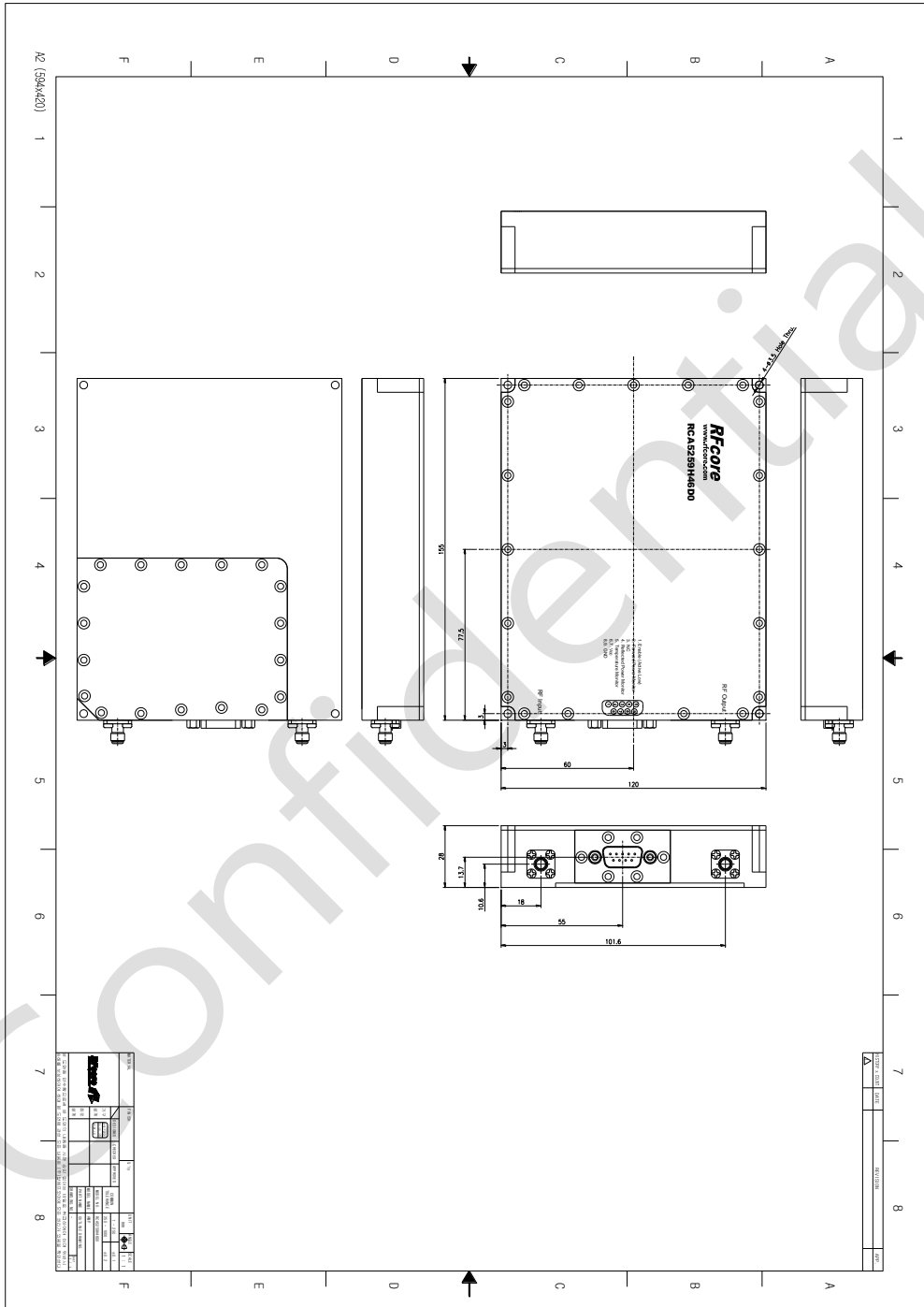
http://www.rfcore.com

Band-Specific High Power Amplifier

Product Name : RCA5259H46D0, Code Name :

Doc. Name : General Spec.

MECHANICAL DRAWING



DRAWING REFERNECE: This is subject to change without notice.

Created	Printed	Document Number	Revision	Manufacturer
2019/9/2	2020/3/9		C	Rfcore co.,Ltd
File : RCA5259H46D0 General Spec.docx				

The Specifications is subject to change before finalization

Customer Service: Tel. 82-31-708-7575

Email: sales@rfcore.com

http://www.rfcore.com