

# Band-Specific High Power Amplifier

Product Name : RCA3337H43D1, Code Name :

Doc. Name : General Spec.

---

<p style="text-align: center;"><b>General Specification</b> for <b>RCA3337H43D1</b></p>
---

1

---

<p style="text-align: center;"><b>RESTRICTION ON USE, DUPLICATION, OR DISCLOSURE OF PROPRIETARY INFORMATION</b></p>
---

This document contains proprietary information, which is the sole property of RFcore co., LTD.

The document is submitted to the recipient for his use only.

By receiving this document the recipient undertakes not to duplicate the documents or to disclose in part of, or the whole of, any of the information contained herein to any third party without receiving before hand, written permission from the submitting company.

Created	Printed	Document Number	Revision	Manufacturer
2019/1/22	2019/5/30		A	<b>RFcore co.,Ltd</b>
File : RCA3337H43D1 General Spec.docx				

*The Specifications is subject to change before finalization*

Customer Service: Tel. 82-31-708-7575

Email: [sales@rfcore.com](mailto:sales@rfcore.com)

<http://www.rfcore.com>

# Band-Specific High Power Amplifier

Product Name : RCA3337H43D1, Code Name :

Doc. Name : General Spec.

ELECTRICAL SPECIFICATIONS		@ 50 Ohms load, 28 Vdc, Tc = 35 °C
Parameter	Specification	Remark
Frequency Range	3300 ~ 3700 MHz	
Saturated Output Power	20 W min.	@ CW, 50 ohms load
Small Signal Gain	43 dB min.	Input Level = 0 dBm
Small Signal Gain Flatness	Peak to Peak 3 dB	Input Level = 0 dBm
Maximum Input Power for no damage	10 dBm	@ CW, 50 ohms load
Input VSWR	Less than 2.0 : 1	
DC Input Voltage	28 ± 1 Vdc	
Current Consumption	3.0 A typ. 3.5 A max.	@ Pout = 20 W CW, 50 ohms load
RF Input Signal Format	CW	

Interface Pin Description		
Connector	Description	Specification
I/O Interface(D-Sub 9Pin Male)	1. Enable(Active Low)	(Enable = 0V, Disable = 5V) pull-up @ 5V with 10k ohm
	2. Forward Power Monitor	Logarithmic Detector(≈0.05V/dB)
	3. N.C	
	4. Reflected Power Monitor	Logarithmic Detector(≈0.05V/dB)
	5. Temperature Monitor	VT= 10(mV) * Tc(°C) + 500(mV), Tc = Case Temperature ± 5°C
	6. Vcc	
	7. Vcc	
	8. GND	
	9. GND	

2

Created	Printed	Document Number	Revision	Manufacturer
2019/1/22	2019/5/30		A	<b>RFcore co.,Ltd</b>
File : RCA3337H43D1 General Spec.docx				

The Specifications is subject to change before finalization

Customer Service: Tel. 82-31-708-7575

Email: sales@rfcore.com

http://www.rfcore.com

## Band-Specific High Power Amplifier

Product Name : RCA3337H43D1, Code Name :

Doc. Name : General Spec.

### ENVIRONMENTAL SPECIFICATIONS

Parameter	Specification	Remark
Operating Case Temperature	-30 ~ +70 °C	At a hottest point of the mechanical case of amplifier module
Storage Temperature	-40 ~ +85 °C	

### MECHANICAL SPECIFICATIONS

Parameter	Specification	Remark
Dimension	145 * 95 * 25 mm	w/o connectors
Weight	Less than 590 g	
RF Input Connector	SMA Female	
RF Output Connector	SMA Female	
I/O Interface Connector	D-Sub 9Pin Male	
Cooling	Adequate Heat-sink required	

Created	Printed	Document Number	Revision	Manufacturer
2019/1/22	2019/5/30		A	<b>RFcore co.,Ltd</b>
File : RCA3337H43D1 General Spec.docx				

*The Specifications is subject to change before finalization*

Customer Service: Tel. 82-31-708-7575

Email: sales@rfcore.com

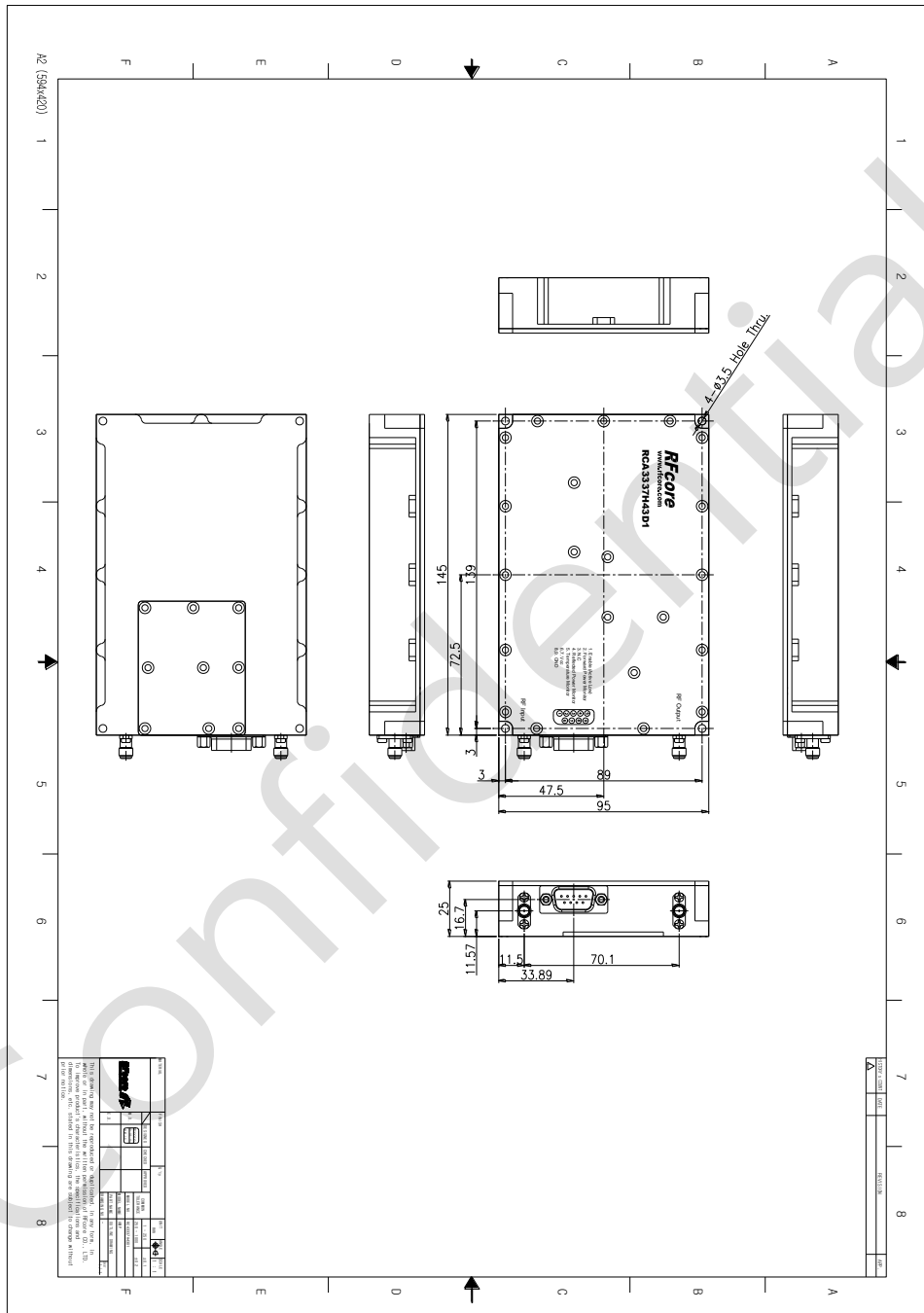
<http://www.rfcore.com>

# Band-Specific High Power Amplifier

Product Name : RCA3337H43D1, Code Name :

Doc. Name : General Spec.

## MECHANICAL DRAWING



DRAWING REFERNECE: This is subject to change without notice.

Created	Printed	Document Number	Revision	Manufacturer
2019/1/22	2019/5/30		A	<b>Rfcore co.,Ltd</b>
File : RCA3337H43D1 General Spec.docx				

The Specifications is subject to change before finalization

Customer Service: Tel. 82-31-708-7575

Email: sales@rfcore.com

http://www.rfcore.com