

Broadband High Power Amplifier

Product Name : RCA2560H45A

Doc. Name : Preliminary Short Spec.

<p style="text-align: center;">Preliminary Short Specification for RCA2560H45A</p>
--

1

<p style="text-align: center;">RESTRICTION ON USE, DUPLICATION, OR DISCLOSURE OF PROPRIETARY INFORMATION</p> <p>This document contains proprietary information, which is the sole property of RFcoreco., LTD. The document is submitted to the recipient for his use only. By receiving this document the recipient undertakes not to duplicate the documents or to disclose in part of, or the whole of, any of the information contained herein to any third party without receiving before hand, written permission from the submitting company.</p>
--

Created	Printed	Document Number	Revision	Manufacturer
2012/5/31	2016/5/12		A	RFcoreco.,Ltd
File : RCA2560H45A Short Spec.docx				

The Specifications is subject to change before finalization

Customer Service: Tel. 82-31-708-7575

Email: sales@rfcore.com

<http://www.rfcore.com>

Broadband High Power Amplifier

Product Name : RCA2560H45A

Doc. Name : Preliminary Short Spec.

ELECTRICAL SPECIFICATIONS		@ 50 Ohms load, 28 Vdc, Tc = 35°C
Parameter	Specification	Remark
Frequency Range	2500 ~ 6000 MHz	
Power Output Psat	40 W typ., 23.5 W min (2.5~3.0 GHz) 40 W typ., 28.5 W min (3.0~6.0 GHz)	@ CW
Small Signal Nominal Gain	57dB ± 2dB	Pin = -30 dBm
Large Signal Nominal Gain	47dB typical	Pin = 0 dBm
Large Signal Gain Flatness	Peak to Peak 6dB	Pin = 0 dBm
Maximum Input Power for no damage	5dBm	
Maximum Output Load Condition	survive with open & short at output connector	Built-in Isolator
Input VSWR	Less than 2 : 1	
DC Current Consumption	5.4 A typ. 7.5 A max.	@Pout=23.5W(2.5~3.0GHz) @Pout=28.5W(3.0~6.0GHz)
DC Input Voltage	28 ± 1.0Vdc	
RF Input Signal Format	CW	
Pin Description	1. Enable (Active Low)	Pulled-up @ 5V with 10kohm
	2. Forward Power Detector	
	3. N.C	
	4. Reverse Power Detector	
	5. Temperature Monitor	VT= 10(mV) * Tc(°C) + 500(mV), Tc = Case Temperature ± 5°C
	6. Vcc	
	7. Vcc	
	8. GND	
	9. GND	

2

Created	Printed	Document Number	Revision	Manufacturer
2012/5/31	2016/5/12		A	RFcoreco.,Ltd
File : RCA2560H45A Short Spec.docx				

The Specifications is subject to change before finalization

Customer Service: Tel. 82-31-708-7575

Email: sales@rfcore.com

http://www.rfcore.com

Broadband High Power Amplifier

Product Name : RCA2560H45A

Doc. Name : Preliminary Short Spec.

ENVIRONMENTAL SPECIFICATIONS

Parameter	Specification	Remark
Operating Case Temperature	-20 ~ 70 °C	@ Baseplate
Storage Temperature	-40 ~ 85 °C	

MECHANICAL SPECIFICATIONS

Parameter	Specification	Remark
Dimension	136 x 110 x 25 mm ³	w/o connectors
Weight	Less than 800g	
RF Input Connector	SMA – Female	
RF Output Connector	SMA – Female	
DC / Interface Connector	D – Sub 9 Pin Male	
Cooling	Adequate Heat-sink required	

Created	Printed	Document Number	Revision	Manufacturer
2012/5/31	2016/5/12		A	RFcoreco.,Ltd
File : RCA2560H45A Short Spec.docx				

The Specifications is subject to change before finalization

Customer Service: Tel. 82-31-708-7575

Email: sales@rfcore.com

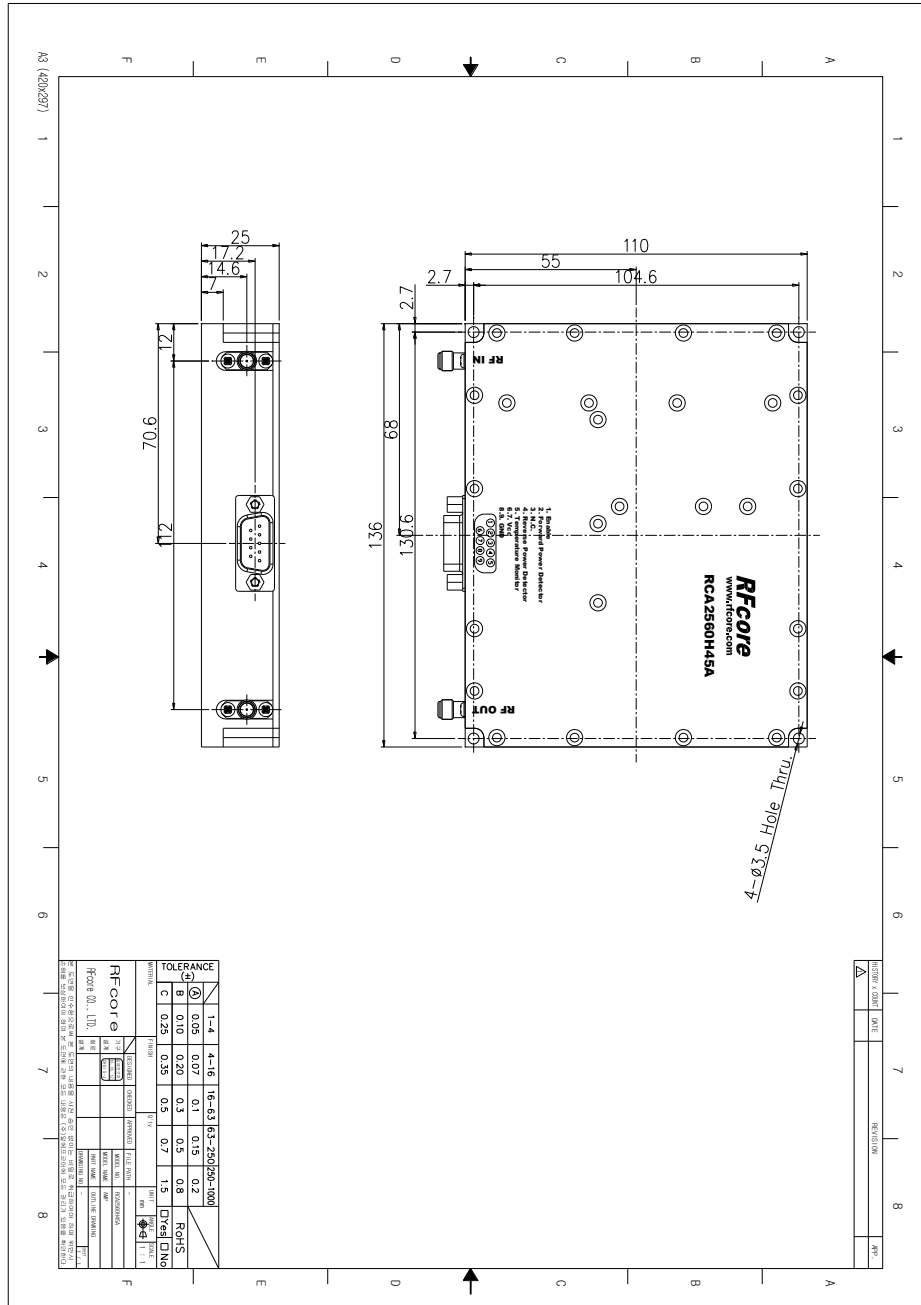
<http://www.rfcore.com>

Broadband High Power Amplifier

Product Name : RCA2560H45A

Doc. Name : Preliminary Short Spec.

MECHANICAL DRAWING



DRAWING REFERNECE: This is subject to change without notice.

Created	Printed	Document Number	Revision	Manufacturer
2012/5/31	2016/5/12		A	RFcoreco.,Ltd
File : RCA2560H45A Short Spec.docx				

The Specifications is subject to change before finalization

Customer Service: Tel. 82-31-708-7575

Email: sales@rfcore.com

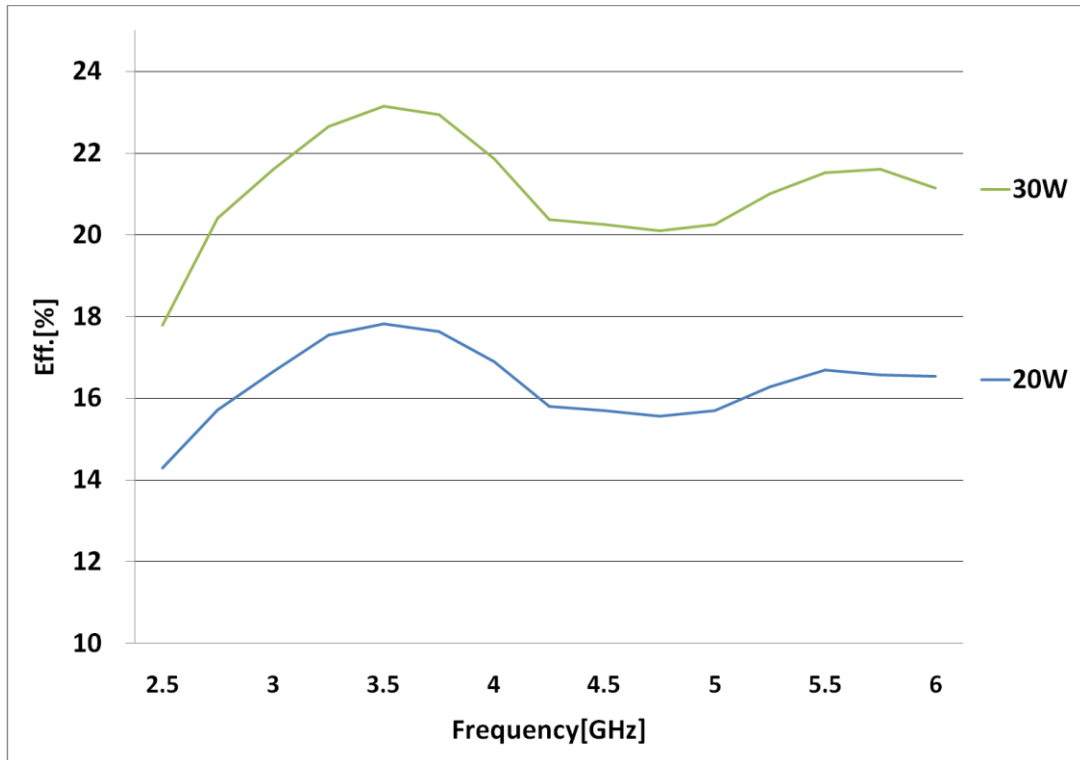
http://www.rfcore.com

Broadband High Power Amplifier

Product Name : RCA2560H45A

Doc. Name : Preliminary Short Spec.

Power Efficiency



5

Created	Printed	Document Number	Revision	Manufacturer
2012/5/31	2016/5/12		A	RFcoreco.,Ltd
File : RCA2560H45A Short Spec.docx				

The Specifications is subject to change before finalization

Customer Service: Tel. 82-31-708-7575

Email: sales@rfcore.com

<http://www.rfcore.com>