

Broadband High Power Amplifier

Product Name : RCA1825H48D1, Code Name : A6Y6SD3UI45

Doc. Name : Preliminary Short Spec.

<p style="text-align: center;">Preliminary Short Specification for RCA1825H48D1</p>

1

<p style="text-align: center;">RESTRICTION ON USE, DUPLICATION, OR DISCLOSURE OF PROPRIETARY INFORMATION</p> <p>This document contains proprietary information, which is the sole property of RFcore co., LTD. The document is submitted to the recipient for his use only. By receiving this document the recipient undertakes not to duplicate the documents or to disclose in part of, or the whole of, any of the information contained herein to any third party without receiving before hand, written permission from the submitting company.</p>

Created	Printed	Document Number	Revision	Manufacturer
2015/10/14	2015/10/14		A	RFcore co.,Ltd
File : RCA1825H48D1 Short Spec.docx				

The Specifications is subject to change before finalization

Customer Service: Tel. 82-31-708-7575

Email: sales@rfcore.com

<http://www.rfcore.com>

Broadband High Power Amplifier

Product Name : RCA1825H48D1, Code Name : A6Y6SD3UI45

Doc. Name : Preliminary Short Spec.

ELECTRICAL SPECIFICATIONS		@ 28 Vdc, 50 Ohms Load, Tc = 35 °C
Parameter	Specification	Remark
Frequency Range	1800 ~ 2500 MHz	Band 1 : 1800 ~ 2200 MHz Band 2 : 2200 ~ 2500 MHz
Saturated Output Power	70W min. @ Band 1 50W min. @ Band 2	
Gain @ Center Frequency	45 ± 1 dB	Input = -15dBm
Gain Flatness	Peak to Peak 6 dB	Input = -15dBm
Maximum Input Power for no damage	10 dBm max	
Input VSWR	Less than 2.0 : 1	
Output VSWR	Less than 2.0 : 1	Built-in isolator
DC Input Current	9 A max. 8 A typ. 8 A max. 7 A typ.	@ Pout = 70W, Band 1 @ Pout = 50W, Band 2
DC Input Voltage	+28 ± 1.0 Vdc	
I/O Map	1. GND	
	2. Do not connect	
	3. VSWR Fail Alarm	Alarm : TTL High Reflected Power > 42dBm (Vpin9 = 1.4 ± 0.1V) @ Fcenter
	4. Temperature Monitor	VT = 3.6 - 0.022 x (Tc - 30) Tc is Case Temperature in degC ± 5°C
	5. Over Temp Alarm	Alarm & Shutdown : High(5V) @ case temp. 85 ± 5°C Auto Restart : LOW(0V) @ case temp. 65 ± 5°C
	6. Enable (Active low)	pulled-up @ 5V with 10KΩ
	7. Do not connect	
	8. Forward Power Monitor	Logarithmic Detector(0.1V/dB) 4.0 ± 0.1 @ 48dBm, center frequency, slope : 0.1V/dB Vpin8 = 4.0 - (48 - Pout) x 0.1 ± 0.1V
	9. Reflected Power Monitor	Vpin9 is the output voltage of diode type detector. It has non-log slope characteristic.

2

Created	Printed	Document Number	Revision	Manufacturer
2015/10/14	2015/10/14		A	RFcore co.,Ltd
File : RCA1825H48D1 Short Spec.docx				

The Specifications is subject to change before finalization

Customer Service: Tel. 82-31-708-7575

Email: sales@rfcore.com

http://www.rfcore.com

Broadband High Power Amplifier

Product Name : RCA1825H48D1, Code Name : A6Y6SD3UI45

Doc. Name : Preliminary Short Spec.

ENVIRONMENTAL SPECIFICATIONS

Parameter	Specification	Remark
Operating Case Temperature	-20 ~ 60 °C	
Storage Temperature	-40 ~ 85 °C	

MECHANICAL SPECIFICATIONS

Parameter	Specification	Remark
Dimension	140 x 125 x 25 mm	
RF Input / Output Connector	Input : SMA – Female Output : SMA -Female	
DC Connector	3W3P(A1: +Vcc, A2: GND, A3: N.C)	
Interface Connector	D-Sub 9Pin Male	
Cooling	Adequate Heat-sink required	

Created	Printed	Document Number	Revision	Manufacturer
2015/10/14	2015/10/14		A	RFcore co.,Ltd
File : RCA1825H48D1 Short Spec.docx				

The Specifications is subject to change before finalization

Customer Service: Tel. 82-31-708-7575

Email: sales@rfcore.com

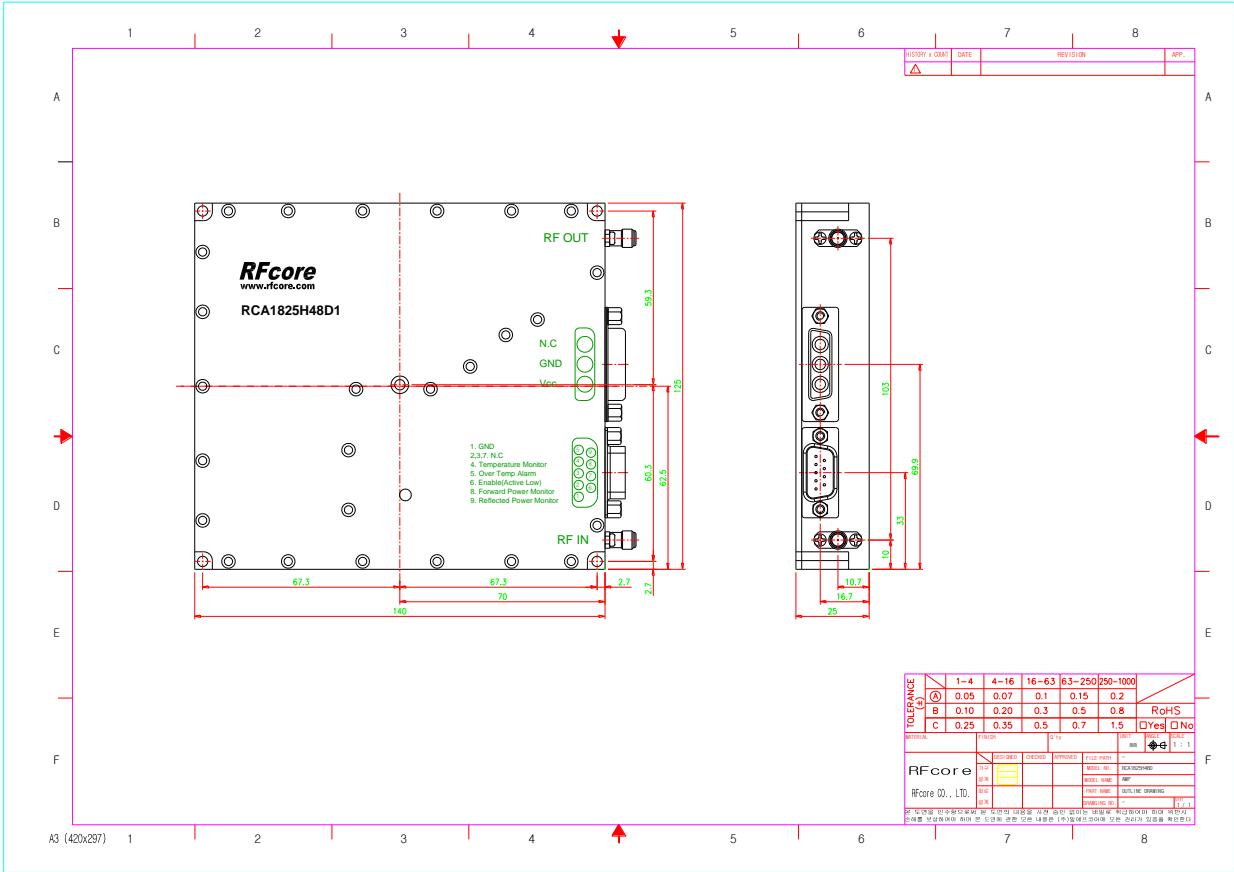
<http://www.rfcore.com>

Broadband High Power Amplifier

Product Name : RCA1825H48D1, Code Name : A6Y6SD3UI45

Doc. Name : Preliminary Short Spec.

MECHANICAL DRAWING



Created	Printed	Document Number	Revision	Manufacturer
2015/10/14	2015/10/14		A	RFcore co.,Ltd
File : RCA1825H48D1 Short Spec.docx				

The Specifications is subject to change before finalization

Customer Service: Tel. 82-31-708-7575

Email: sales@rfcore.com

http://www.rfcore.com