

Broadband High Power Amplifier

Product Name : RCA1117H40B0

Doc. Name : General Spec.

<p style="text-align: center;">General Specification for RCA1117H40B0</p>

1

<p style="text-align: center;">RESTRICTION ON USE, DUPLICATION, OR DISCLOSURE OF PROPRIETARY INFORMATION</p>

This document contains proprietary information, which is the sole property of Rfcore co., LTD.

The document is submitted to the recipient for his use only.

By receiving this document the recipient undertakes not to duplicate the documents or to disclose in part of, or the whole of, any of the information contained herein to any third party without receiving before hand, written permission from the submitting company.

Created	Printed	Document Number	Revision	Manufacturer
2018/10/5	2018/11/9		D	Rfcore co.,Ltd
File : RCA1117H40B0 General Spec.docx				

The Specifications is subject to change before finalization

Customer Service: Tel. 82-31-708-7575

Email: sales@rfcore.com

<http://www.rfcore.com>

Broadband High Power Amplifier

Product Name : RCA1117H40B0

Doc. Name : General Spec.

ELECTRICAL SPECIFICATIONS		@ 50 Ohms load, 28 Vdc, Tc = 35 °C
Parameter	Specification	Remark
Frequency Range	1100 ~ 1700 MHz	
Saturated Output Power	10 W min.	@ CW, 50 ohms load condition
Small Signal Gain	41 dB min.	Pin = - 15 dBm
Large Signal Gain	38 dB min.	Pin = 0 dBm
Gain Flatness	Peak to Peak 3.0 dB	Pin = 0 dBm
Input VSWR	Less than 2.0 : 1	
Output VSWR	Less than 2.0 : 1	Built in Isolator
Maximum Input Power for no damage	10 dBm	@ CW, 50 ohms load
Enable/Disable Switching Time	10 usec max.	
DC Input Voltage	28 ± 1.0Vdc	
DC Current Consumption	1.5 A typ., 1.8 A max.	@ Pout = 10 W CW, 50 ohms load condition
I/O Interface (Filtered D-Sub 9Pin Male)	1. Enable(Active Low)	pulled-up @ 5V with 10k ohm Does not exceed 25mA Enable : TTL Low or GND Disable : TTL High(3.3-5V) or OPEN
	2. Forward Power Detector	Logarithmic Detector(≈0.05V/dB)
	3. N.C	Do not connect
	4. Reflected Power Detector	Logarithmic Detector(≈0.05V/dB)
	5. Temperature Monitor	VT= 10(mV) * Tc(°C) + 500(mV), Tc = Case Temperature± 5°C
	6. Vcc	
	7. Vcc	
	8. GND	
	9. GND	

2

Created	Printed	Document Number	Revision	Manufacturer
2018/10/5	2018/11/9		D	RFcore co.,Ltd
File : RCA1117H40B0 General Spec.docx				

The Specifications is subject to change before finalization

Customer Service: Tel. 82-31-708-7575

Email: sales@rfcore.com

http://www.rfcore.com

Broadband High Power Amplifier

Product Name : RCA1117H40B0

Doc. Name : General Spec.

ENVIRONMENTAL SPECIFICATIONS

Parameter	Specification	Remark
Operating Case Temperature(Tc)	-30 ~ 75 °C	At a hottest point of the mechanical case of amplifier module
Storage Temperature	-40 ~ 85 °C	

MECHANICAL SPECIFICATIONS

Parameter	Specification	Remark
Dimension	110 x 90 x 20 mm	w/o connectors
Weight	Less than 400 g	
RF Input Connector	SMA Female	
RF Output Connector	SMA Female	
I/O Interface Connectors	Filter D-Sub 9Pin Male	Capacitor Value : 22pF, 1000pF
Cooling	Adequate Heat-sink required	

Created	Printed	Document Number	Revision	Manufacturer
2018/10/5	2018/11/9		D	RFcore co.,Ltd
File : RCA1117H40B0 General Spec.docx				

The Specifications is subject to change before finalization

Customer Service: Tel. 82-31-708-7575

Email: sales@rfcore.com

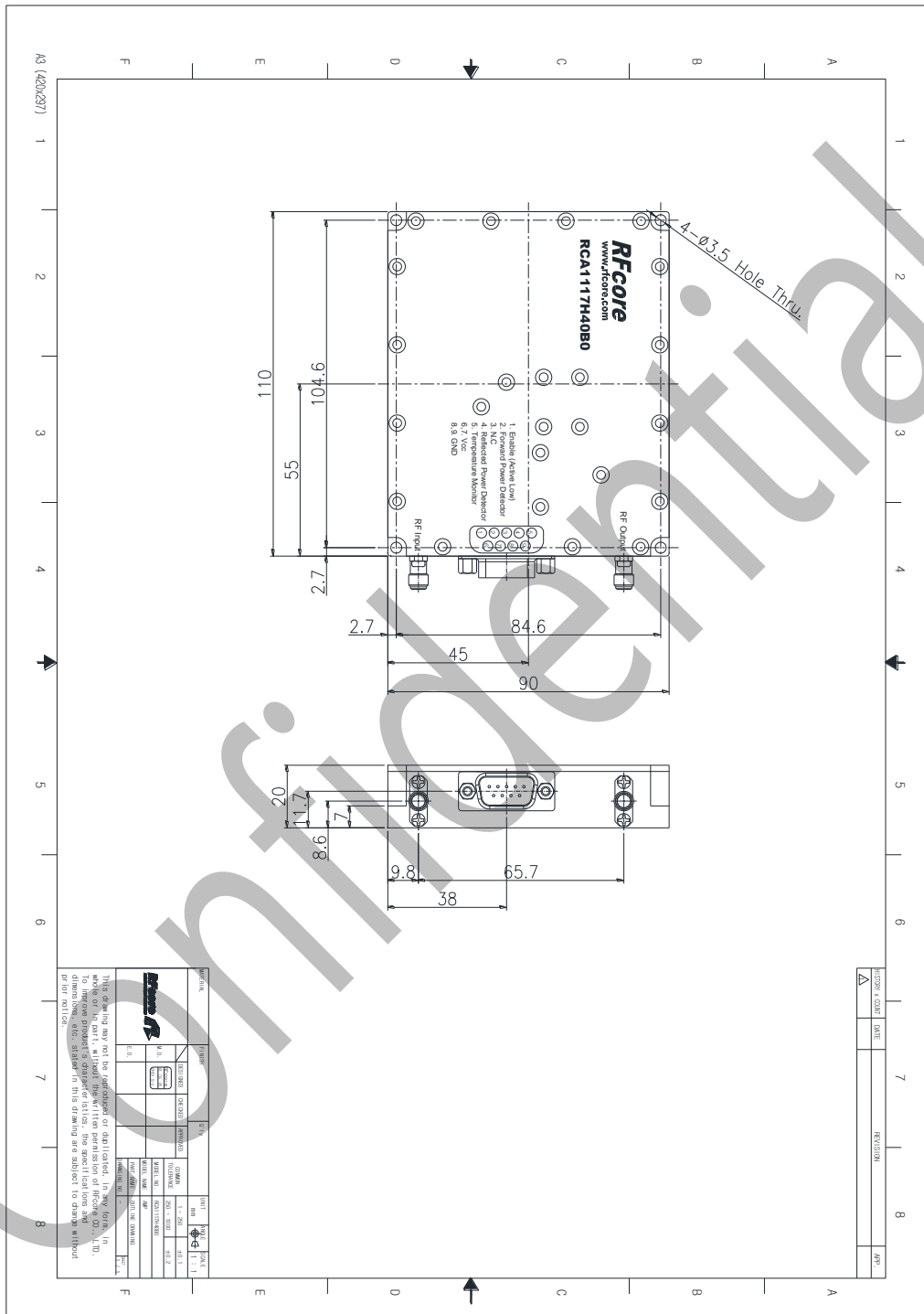
<http://www.rfcore.com>

Broadband High Power Amplifier

Product Name : RCA117H40B0

Doc. Name : General Spec.

MECHANICAL DRAWING



DRAWING REFERNECE: This is subject to change without notice.

Created	Printed	Document Number	Revision	Manufacturer
2018/10/5	2018/11/9		D	Rfcore co.,Ltd
File : RCA117H40B0 General Spec.docx				

The Specifications is subject to change before finalization

Customer Service: Tel. 82-31-708-7575

Email: sales@rfcore.com

http://www.rfcore.com