

Broadband High Power Amplifier

Product Name : RCA0622H52D1

Doc. Name : General Spec.

<p style="text-align: center;">General Specification for RCA0622H52D1</p>

1

<p style="text-align: center;">RESTRICTION ON USE, DUPLICATION, OR DISCLOSURE OF PROPRIETARY INFORMATION</p> <p>This document contains proprietary information, which is the sole property of RFcore co., LTD. The document is submitted to the recipient for his use only. By receiving this document the recipient undertakes not to duplicate the documents or to disclose in part of, or the whole of, any of the information contained herein to any third party without receiving before hand, written permission from the submitting company.</p>

Created	Printed	Document Number	Revision	Manufacturer
2018/4/24	2018/5/21		E	RFcore co.,Ltd
File : RCA0622H52D1 General Spec.docx				

The Specifications is subject to change before finalization

Customer Service: Tel. 82-31-708-7575

Email: sales@rfcore.com

<http://www.rfcore.com>

Broadband High Power Amplifier

Product Name : RCA0622H52D1

Doc. Name : General Spec.

ELECTRICAL SPECIFICATIONS		@ 50 Ohms load, 28 Vdc, Tc = 35 °C
Parameter	Specification	Remark
Frequency Range	600 ~ 2200 MHz	
Saturated Output Power	150 Watts min.	@ CW, 50 Ohms load condition
Small Signal Gain	55 dB min.	Input Power = -15 dBm CW
Large Signal Gain	50 dB min.	Input Power = 0 dBm CW
Gain Flatness	Peak to Peak 6 dB	Input Power = - 15 dBm CW
Maximum Input Power for no damage	10 dBm	In order to get 150W CW output power, We recommend injecting less than 0 dBm of the input power not exceeding 5dBm.
Input VSWR	Less than 2 : 1	
Harmonics(H2, H3)	Better than -15 dBc	@ Pout = 100W CW, 50 Ohms load
Quiescent Current	20 A max	RF OFF
Shutdown Current	0.2 A max	Pin 1 = Disable
DC Current Consumption	23 A max. 20 A typ.	@ Pout = 100W CW, 50 Ohms load
DC Current Consumption	28 A max. 24 A typ.	@ Pout = 150W CW, 50 Ohms load
DC Input Voltage	28 ± 1.0Vdc	
RF Input Signal Format	CW	
I/O Map(D-Sub 9Pin Male)	<ol style="list-style-type: none"> 1. Enable(Active Low) 2. Do not connect 3. Do not connect 4. Over Temp. Alarm 5. Temperature Monitor 6. Do not connect 7. Do not connect 8. Forward Power Monitor 9. Reflected Power Monitor 	Enable : GND or TTL Low Disable : OPEN or TTL High Pulled up @ 5 V with 10 kohm Alarm & Shutdown : High(5V) @ case temp. 85 ± 5°C Recovery : Low(0V) @ case temp. 65 ± 5°C VT= 10(mV) * Tc(°C) + 500(mV), Tc = Case Temperature± 5°C Logarithmic Detector(≈0.05V/dB) Logarithmic Detector(≈0.05V/dB)

2

Created	Printed	Document Number	Revision	Manufacturer
2018/4/24	2018/5/21		E	RFcore co.,Ltd
File : RCA0622H52D1 General Spec.docx				

The Specifications is subject to change before finalization

Customer Service: Tel. 82-31-708-7575

Email: sales@rfcore.com

http://www.rfcore.com

Broadband High Power Amplifier

Product Name : RCA0622H52D1

Doc. Name : General Spec.

ENVIRONMENTAL SPECIFICATIONS

Parameter	Specification	Remark
Operating Case Temperature	-20 ~ 70 °C	At a hottest point of the mechanical case of amplifier module
Storage Temperature	-40 ~ 85 °C	

MECHANICAL SPECIFICATIONS

Parameter	Specification	Remark
Dimension	329.3 * 188 * 30 mm	w/o connectors
Weight	Less than 3.8 kg	
Input Connector	SMA Type Female	
Output Connector	N Type Female	
DC Connector	3W3(A1: VCC, A2 : GND, A3 : N.C)	
Control Connector	D-Sub 9Pin Male	
Cooling	Adequate Heat-sink required	

Created	Printed	Document Number	Revision	Manufacturer
2018/4/24	2018/5/21		E	RFcore co.,Ltd
File : RCA0622H52D1 General Spec.docx				

The Specifications is subject to change before finalization

Customer Service: Tel. 82-31-708-7575

Email: sales@rfcore.com

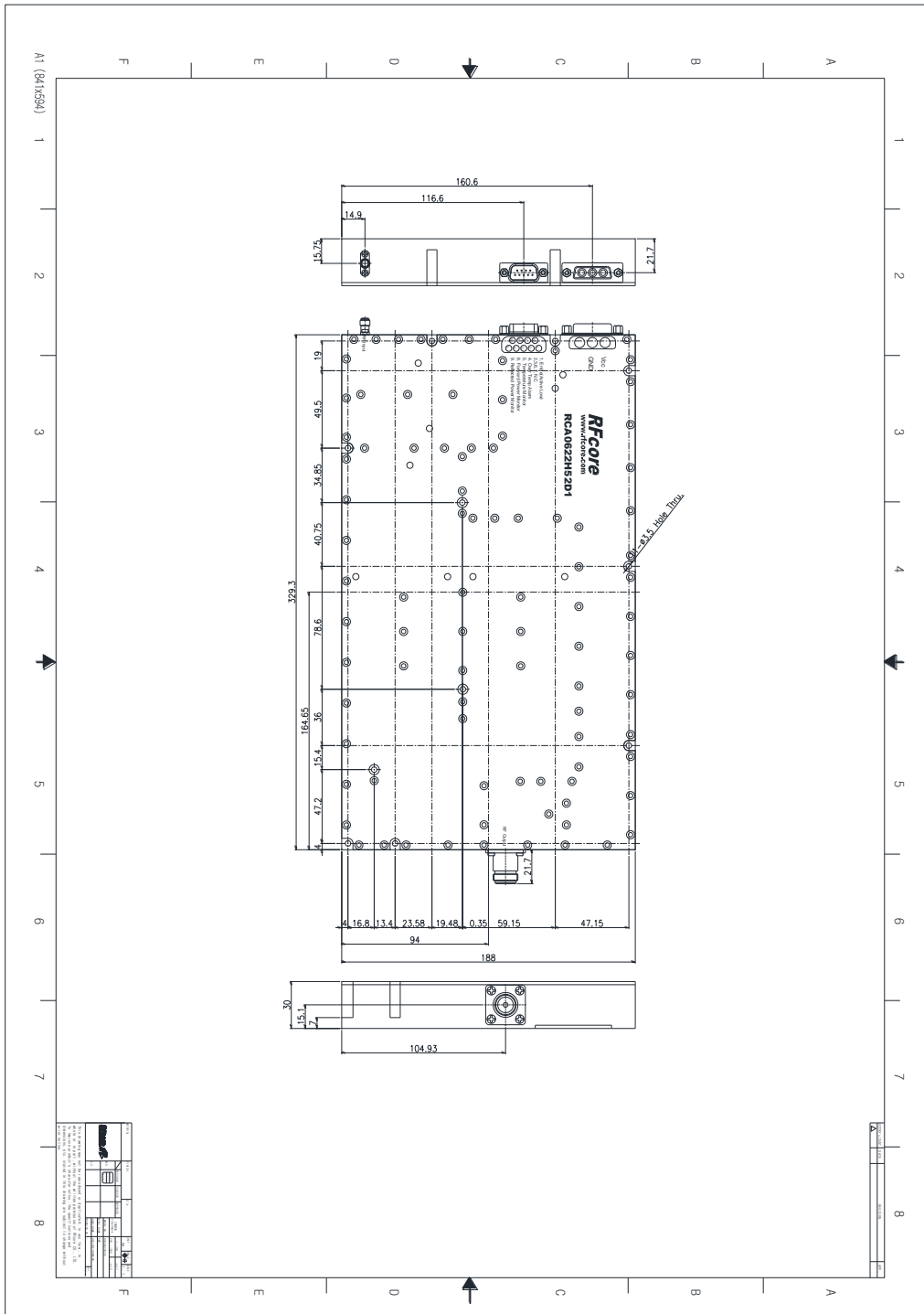
<http://www.rfcore.com>

Broadband High Power Amplifier

Product Name : RCA0622H52D1

Doc. Name : General Spec.

MECHANICAL DRAWING



DRAWING REFERNECE: This is subject to change without notice.

Created	Printed	Document Number	Revision	Manufacturer
2018/4/24	2018/5/21		E	Rfcore co.,Ltd
File : RCA0622H52D1 General Spec.docx				

The Specifications is subject to change before finalization

Customer Service: Tel. 82-31-708-7575

Email: sales@rfcore.com

http://www.rfcore.com