

RCP0525A

High Power Wide Band Directional Detector

RCP0525A

Features

- Light Weight Metal Diet
- Compact Size
- Unique Coupler structure for wide band high directivity operation.
- Internal Wide Band Diode Detector
- No DC input
- Output with 3 pin DC connector
- Fast response time
- It can dock on RCA0525H44 amplifier
- Molex 2.5 interface
- Useful upto 3 GHz



Electrical Specification RCP0525A

Parameter	Symbol	Typical	Units/Remarks
Bandwidth		500~2500	MHz
Maximum handling power	Pw	50	Watt
Dynamic Range		0.5~50	Watts
Insertion Loss	IL	< 0.7	dB
Input VSWR,	VSWR	1.5:1	
Output VSWR	VSWR	1.5:1	
Detector Accuracy		TBD	
Detector flatness over band		TBD	
Directivity		16 20	dB min dB Typ.
Detector Response time		TBD	
Detector port output impedance		1	kohm
RF Connector Type		SMA	female
Size (w/o Connector Extension)		86 x 90 x 27	mm
Operating Case Temperature		-20~70	degree C
Storage Temperature		-40~90	degree C
Weight		<0.1	Kg
Vibration Condition		TBD	

Specifications subject to change without notice.

Customer Service: Tel. 82-31-708-7575

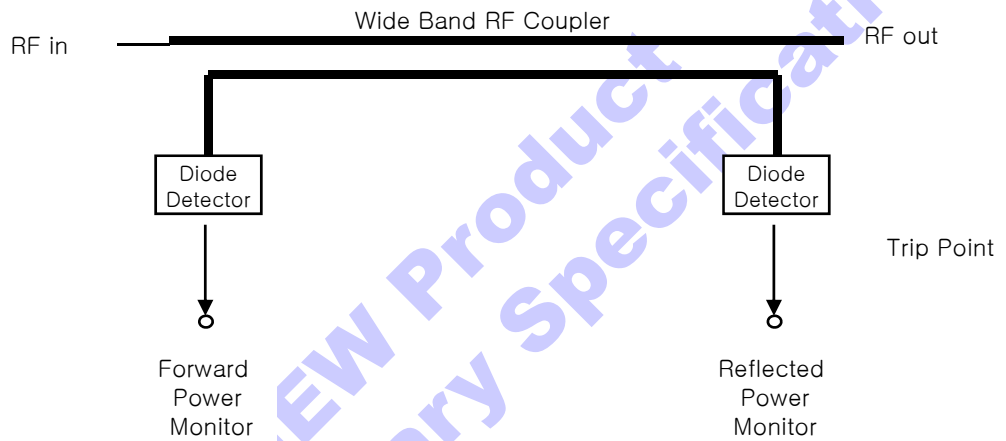
Email: kijeon@rfcore.com

<http://www.rfcore.com>

Descriptions

RCP0525A measures forward and reflected power using wide band directional coupler with high directivity.

Unique Coupler Design allow Compact and Wide band resulting light weight.



Specifications subject to change without notice.

Customer Service: Tel. 82-31-708-7575

Email: kijeon@rfcore.com

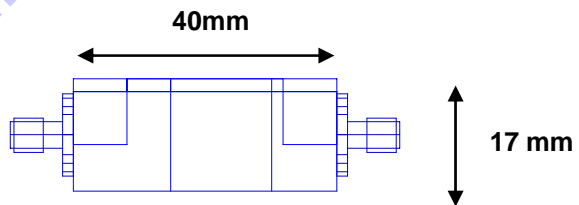
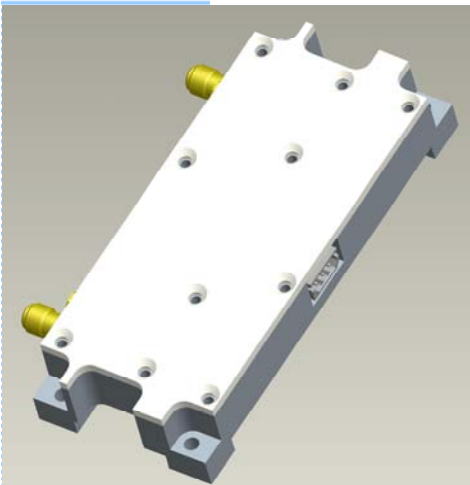
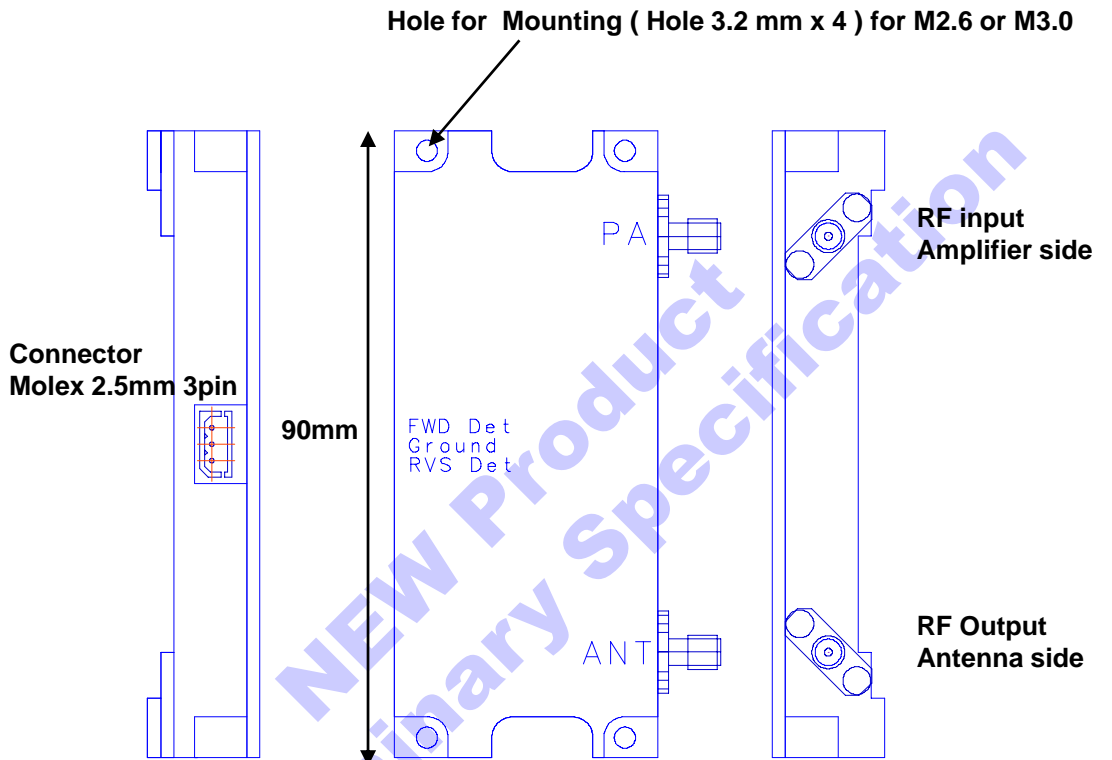
<http://www.rfcore.com>

RFcore

This material is not to be supplied by other party than RFcore co., LTD

Brief Mechanical Description

RCPO525A



Specifications subject to change without notice.

Customer Service: Tel. 82-31-708-7575

Email: kijeon@rfcore.com

<http://www.rfcore.com>

RFcore

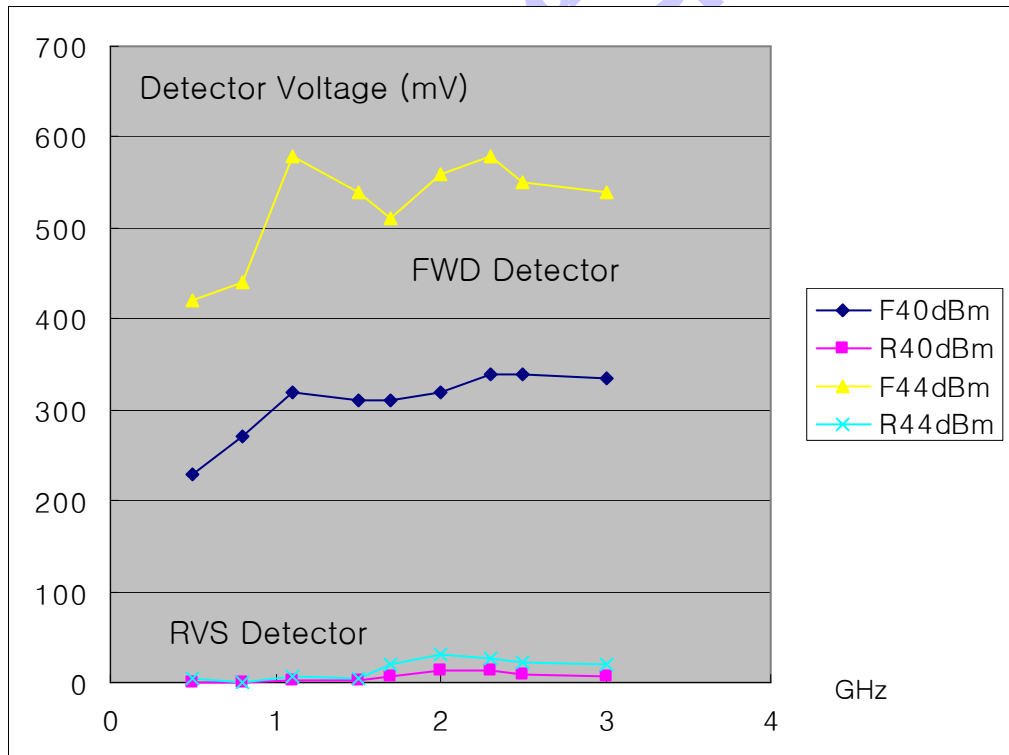
This material is not to be supplied by other party than RFcore co., LTD

RCP0525A

Pin Description

Pin Name	Specification
Input	RF in
Output	RF out
Molex Pin1	Reflected Power Monitor
Molex Pin2	Ground
Molex Pin3	Forward Power Monitor

Typical Performance Measured with 50 ohm termination at output.



Pin = 40 dBm / 44 dBm

Specifications subject to change without notice.

Customer Service: Tel. 82-31-708-7575

Email: kijeon@rfcore.com

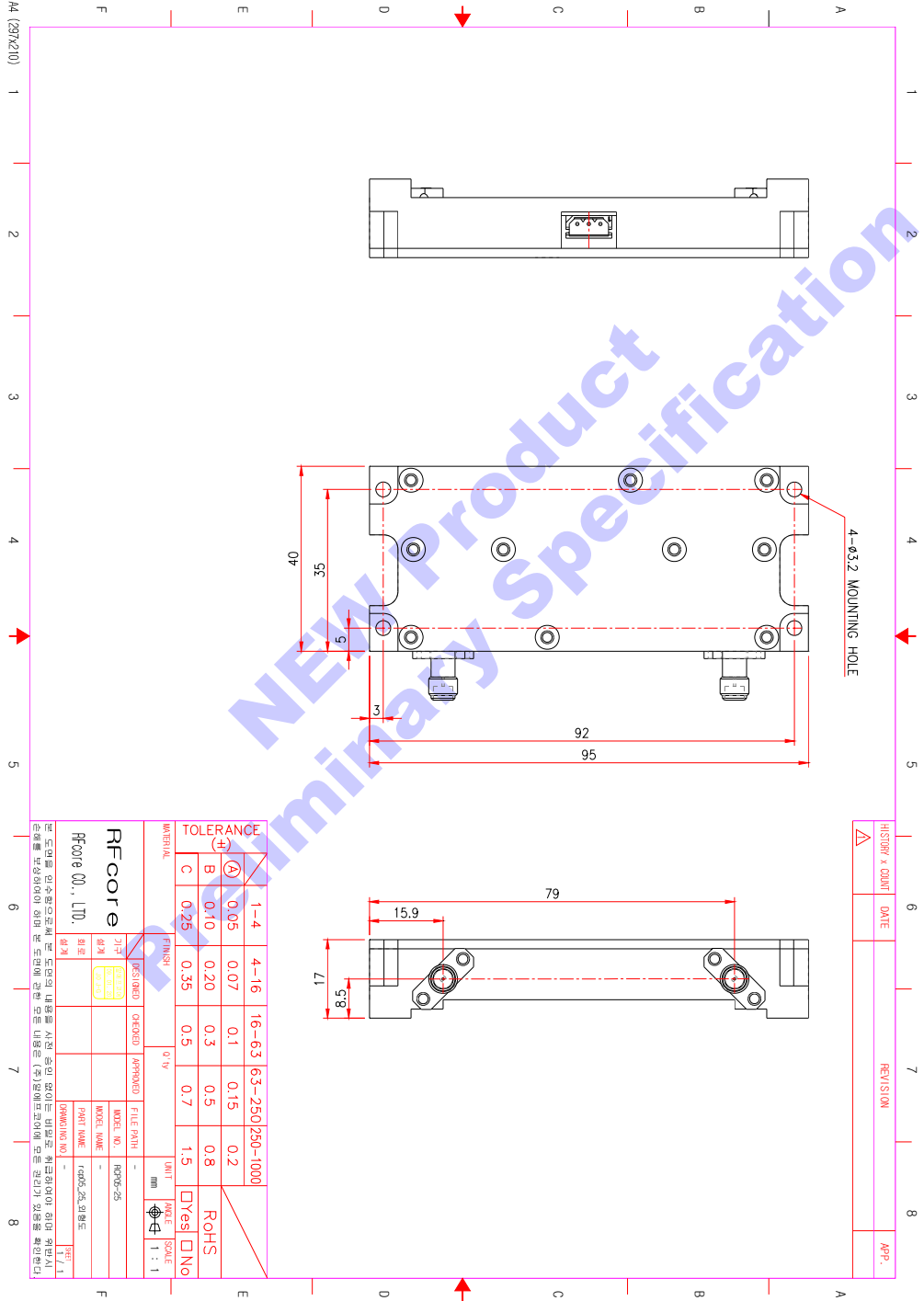
<http://www.rfcore.com>

RFcore

This material is not to be supplied by other party than RFcore co., LTD

RCP0525A

Mechanical Dimensions



Specifications subject to change without notice.

Customer Service: Tel. 82-31-708-7575

Email: kijeon@rfcore.com

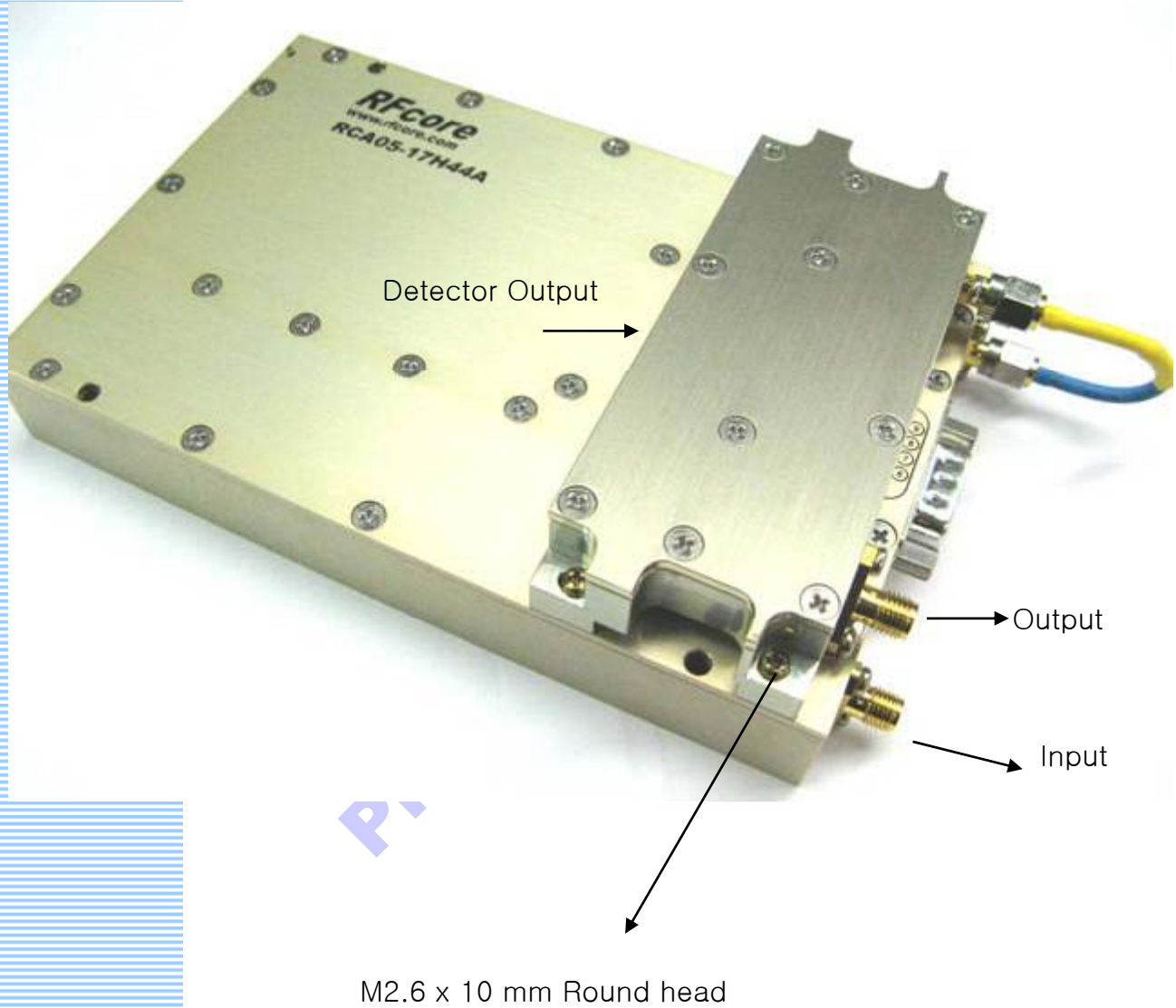
<http://www.rfcore.com>



This material is not to be supplied by other party than RFcore co., LTD

High Power Directional Detector

Coupler Mounted on RCA0-17H44A



Specifications subject to change without notice.

Customer Service: Tel. 82-31-708-7575

Email: kijeon@rfcore.com

<http://www.rfcore.com>

RFcore

This material is not to be supplied by other party than RFcore co., LTD