

# Band-Specific High Power Amplifier

Product Name : RCA1117H47D, Code Name :

Doc. Name : General Spec.

---

<p style="text-align: center;"><b>General Specification</b> for <b>RCA1117H47D</b></p>
--

1

---

<p style="text-align: center;"><b>RESTRICTION ON USE, DUPLICATION, OR DISCLOSURE OF PROPRIETARY INFORMATION</b></p> <p>This document contains proprietary information, which is the sole property of RFcore co., LTD. The document is submitted to the recipient for his use only. By receiving this document the recipient undertakes not to duplicate the documents or to disclose in part of, or the whole of, any of the information contained herein to any third party without receiving before hand, written permission from the submitting company.</p>
---

Created	Printed	Document Number	Revision	Manufacturer
2016/2/26	2017/1/12		B	<b>RFcore co.,Ltd</b>
File : RCA1117H47D General Spec.docx				

*The Specifications is subject to change before finalization*

Customer Service: Tel. 82-31-708-7575

Email: [sales@rfcore.com](mailto:sales@rfcore.com)

<http://www.rfcore.com>

# Band-Specific High Power Amplifier

Product Name : RCA1117H47D, Code Name :

Doc. Name : General Spec.

ELECTRICAL SPECIFICATIONS		@ 28 Vdc, 50 Ohms Load, Tc = 35 °C
Parameter	Specification	Remark
Frequency Range	1100 ~ 1700 MHz	
Saturated Output Power	47 dBm min.	CW
Gain	48 dB min.	Input = -15dBm
Gain Flatness	Peak to Peak 2.5 dB	Input = -15dBm
Maximum Input Power for no damage on DC ON	7 dBm max.	
Input VSWR	Less than 2 : 1	
Output VSWR	Less than 2 : 1	Built in Isolator
On/Off Switching time	1 usec typ.	
DC Input Voltage	+28 ± 1.0 Vdc	
DC Input Current	8 A max. 6.5 A typ.	@ Pout = 50W
I/O Map	1. Enable (Active low)	pulled-up@5V with 10KΩ
	2. Forward Power Monitor	Logarithmic Detector(0.05V/dB)
	3. VSWR Fail Alarm	Alarm : TTL High @ Infinite VSWR such as OPEN or SHORT
	4. Reflected Power Monitor	Logarithmic Detector(0.05V/dB)
	5. Temperature Monitor	VT= 10(mV) * Tc(°C) + 500(mV), Tc = Case Temperature ± 5°C
	6. Vcc	
	7. Vcc	
	8. GND	
	9. GND	

2

ENVIRONMENTAL SPECIFICATIONS		
Parameter	Specification	Remark
Operating Case Temperature	-10 ~ 70 °C	
Storage Temperature	-40 ~ 85 °C	

Created	Printed	Document Number	Revision	Manufacturer
2016/2/26	2017/1/12		B	<b>RFcore co.,Ltd</b>
File : RCA1117H47D General Spec.docx				

The Specifications is subject to change before finalization

Customer Service: Tel. 82-31-708-7575

Email: sales@rfcore.com

http://www.rfcore.com

# Band-Specific High Power Amplifier

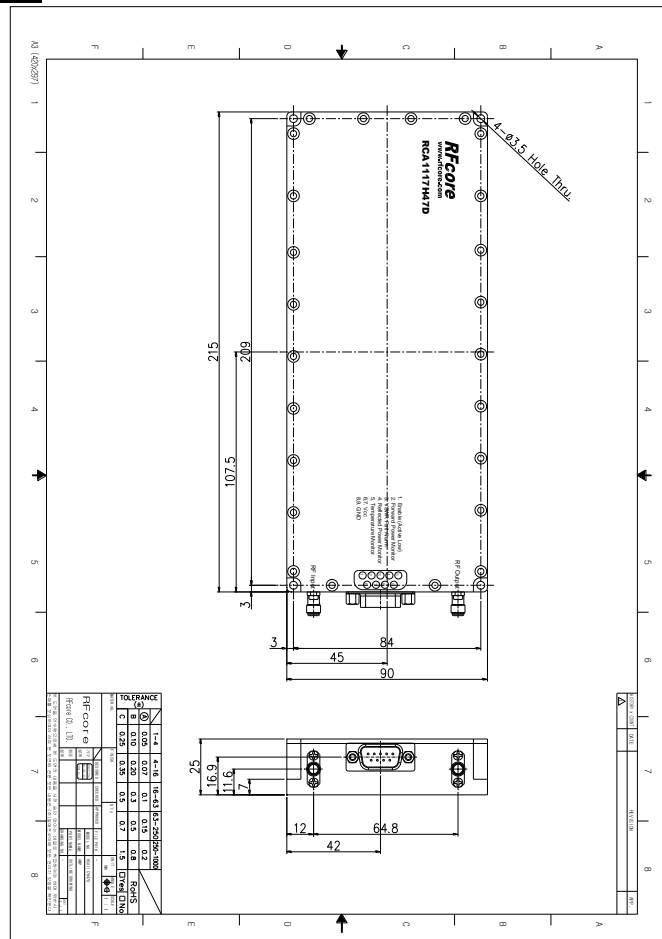
Product Name : RCA1117H47D, Code Name :

Doc. Name : General Spec.

## MECHANICAL SPECIFICATIONS

Parameter	Specification	Remark
Dimension	215 x 90 x 25 mm	
Weight	Less than 1100 g	
RF Input Connector	SMA – Female	
RF Output Connector	SMA – Female	
I/O Interface Connector	D-Sub 9Pin Male	
Cooling	Adequate Heat-sink required	

## MECHANICAL DRAWING



DRAWING REFERNECE: This is subject to change without notice.

Created	Printed	Document Number	Revision	Manufacturer
2016/2/26	2017/1/12		B	<b>RFcore co.,Ltd</b>
File : RCA1117H47D General Spec.docx				

The Specifications is subject to change before finalization

Customer Service: Tel. 82-31-708-7575

Email: sales@rfcore.com

http://www.rfcore.com