

# Broadband High Power Amplifier

Product Name : RCA0810H42A2

Doc. Name : General Spec.

RoHs  
compliant

## General Specification for RCA0810H42A2

1

### RESTRICTION ON USE, DUPLICATION, OR DISCLOSURE OF PROPRIETARY INFORMATION

This document contains proprietary information, which is the sole property of Rfcore co., LTD.

The document is submitted to the recipient for his use only.

By receiving this document the recipient undertakes not to duplicate the documents or to disclose in part of, or the whole of, any of the information contained herein to any third party without receiving before hand, written permission from the submitting company.

Created	Printed	Document Number	Revision	Manufacturer
2016/10/12	2017/1/12		A	<b>RFcore co.,Ltd</b>
File : RCA0810H42A2 General Spec.docx				

*The Specifications is subject to change before finalization*

Customer Service: Tel. 82-31-708-7575

Email: [sales@rfcore.com](mailto:sales@rfcore.com)

<http://www.rfcore.com>

# Broadband High Power Amplifier

Product Name : RCA0810H42A2

Doc. Name : General Spec.

ELECTRICAL SPECIFICATIONS	@ 50 Ohms load, 28 Vdc, Tc = 35 °c	
Parameter	Specification	Remark
Frequency Range	800 ~ 1000 MHz	
Saturated Output Power	15 W min.	@ CW
Gain	38 dB min.	Pin = -15 dBm
Gain Flatness	Peak to Peak 3.0 dB	Pin = -15 dBm
Input VSWR	Less than 2.0 : 1	
Output VSWR	Less than 2.0 : 1	Built-in Isolator
Maximum load VSWR for amplifier survival	Infinite, any phase	@ Pout = 15 W CW, Tc = 75°C
Maximum Input Power for no damage	7 dBm	
Enable/Disable Switching Time	Less than 10 us	
DC Input Voltage	28 ± 1.0 Vdc	
DC Current Consumption	1.3 A typ., 1.5 A max.	@ Pout = 15 W CW
I/O Interface (D-Sub 9Pin Male)	1. Enable(Active Low)	Pulled-down with 10kohm Does not exceed 25mA Enable : TTL Low or Open Disable : TTL High(3.3-5V)
	2. Forward Power Monitor	Logarithmic Detector(±0.05V/dB)
	3. N.C	
	4. Reflected Power Monitor	Logarithmic Detector(±0.05V/dB)
	5. Temperature Monitor	VT= 10(mV) * Tc(°C) + 500(mV), Tc = Case Temperature± 5°C
	6. Vcc	
	7. Vcc	
	8. GND	
	9. GND	

2

Created	Printed	Document Number	Revision	Manufacturer
2016/10/12	2017/1/12		A	<b>RFcore co.,Ltd</b>
File : RCA0810H42A2 General Spec.docx				

The Specifications is subject to change before finalization

Customer Service: Tel. 82-31-708-7575

Email: sales@rfcore.com

http://www.rfcore.com

# Broadband High Power Amplifier

Product Name : RCA0810H42A2

Doc. Name : General Spec.

## ENVIRONMENTAL SPECIFICATIONS

Parameter	Specification	Remark
Operating Case Temperature(Tc)	-20 ~ 75 °C	At a hottest point of the mechanical case of amplifier module
Storage Temperature	-40 ~ 85 °C	

## MECHANICAL SPECIFICATIONS

Parameter	Specification	Remark
Dimension	80 x 95 x 20 mm	w/o connector
Weight	Less than 250g	
RF Input Connector	SMA Female	
RF Output Connector	SMA Female	
I/O Interface Connectors	D-Sub 9Pin Male	
Cooling	Adequate Heat-sink required	

Created	Printed	Document Number	Revision	Manufacturer
2016/10/12	2017/1/12		A	<b>RFcore co.,Ltd</b>
File : RCA0810H42A2 General Spec.docx				

*The Specifications is subject to change before finalization*

Customer Service: Tel. 82-31-708-7575

Email: sales@rfcore.com

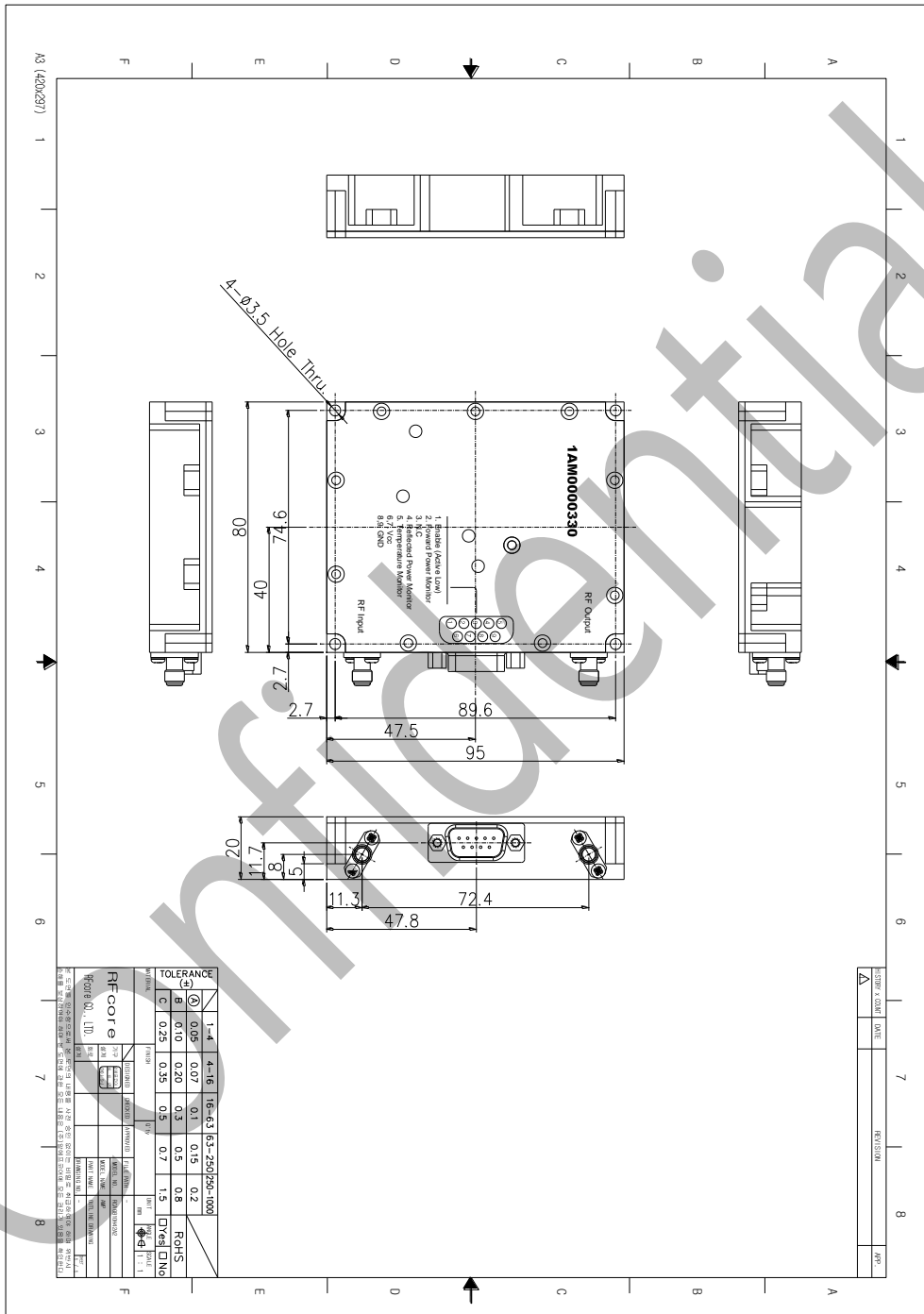
<http://www.rfcore.com>

# Broadband High Power Amplifier

Product Name : RCA0810H42A2

Doc. Name : General Spec.

## MECHANICAL DRAWING



DRAWING REFERNECE: This is subject to change without notice.

Created	Printed	Document Number	Revision	Manufacturer
2016/10/12	2017/1/12		A	<b>RFcore co.,Ltd</b>
File : RCA0810H42A2 General Spec.docx				

The Specifications is subject to change before finalization

Customer Service: Tel. 82-31-708-7575

Email: sales@rfcore.com

http://www.rfcore.com