

Rack Mountable System Amplifier

Product Name : RCA1822U53

Doc. Name : Preliminary Short Spec.

Preliminary Short Specification
for
RCA1822U53

1

RESTRICTION ON USE, DUPLICATION, OR DISCLOSURE OF PROPRIETARY INFORMATION

This document contains proprietary information, which is the sole property of RFcore co., LTD.
The document is submitted to the recipient for his use only.
By receiving this document the recipient undertakes not to duplicate the documents or to disclose in part of, or the whole of, any of the information contained herein to any third party without receiving before hand, written permission from the submitting company.

Created	Printed	Document Number	Revision	Manufacturer
2014/03/03	2014/3/3		A	RFcore co.,Ltd
File : RCA1822U54 Short Spec.docx				

The Specifications is subject to change before finalization

Rack Mountable System Amplifier

Product Name : RCA1822U53

Doc. Name : Preliminary Short Spec.

ELECTRICAL SPECIFICATIONS		@ 220 Vac, 50 Ohms Load, Ta = 25 °C
Parameter	Specification	Remark
Frequency Range	1810 ~ 2170MHz	
Saturated Output Power	200Watts min.	
Input Power for Rated Output	0 dBm max.	
Maximum Input Power for Survival	5dBm	
Gain	56 dB typ.	Input level = -15 dBm,
Flatness	Peak to Peak 4.0dB	Input level = -15 dBm,
Input VSWR	2 : 1 max.	
Output VSWR	2 : 1 max.	
Maximum Load VSWR for amplifier survival	Infinite	Built-in Isolator
Harmonics	-50 dBc min.	@250W
Spurious Signal	-60 dBc max.	@250W
Primary Supply Voltage	220VAC	176 ~ 264VAC / 47 ~ 63 Hz
Power Consumption	1200 Watts typ. [TBD]	1500 Watts max.
RF Input Signal Format	CW	
Input / Output Impedance	50 Ohms nominal	

2

ENVIRONMENTAL SPECIFICATIONS		
Parameter	Specification	Remark
Operating Ambient Temperature	0 ~ 50 °C	
Storage Temperature	-40 ~ 85 °C	

Created	Printed	Document Number	Revision	Manufacturer
2014/03/03	2014/3/3		A	RFcore co.,Ltd
File : RCA1822U54 Short Spec.docx				

The Specifications is subject to change before finalization

Rack Mountable System Amplifier

Product Name : RCA1822U53

Doc. Name : Preliminary Short Spec.

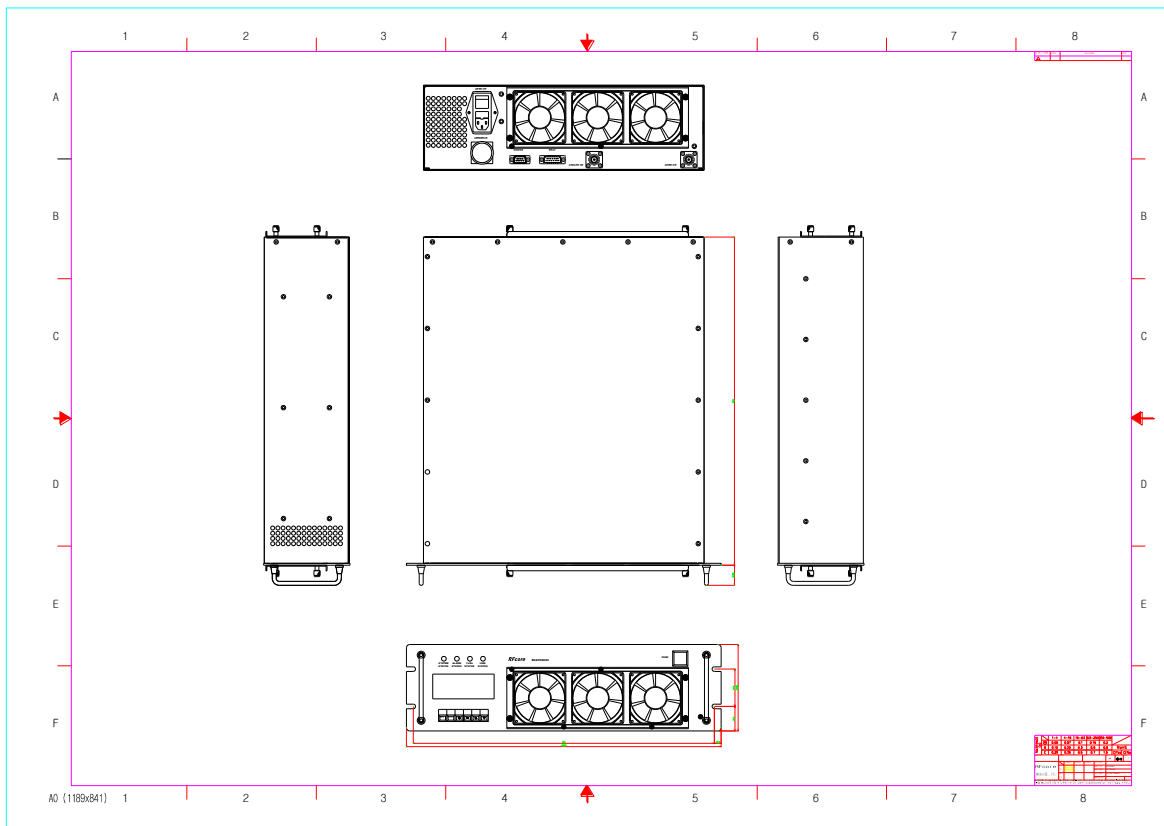
MECHANICAL SPECIFICATIONS

Parameter	Specification	Remark
Dimension	19"x5.25"x20"mm max.	
Weight	Less than 30 kg [TBD]	
RF Input / Output Connector	N – Female	On rear panel
Remote Control Connector	RJ45 for Ethernet	On rear panel
Power Connector	IEC-60320 C14	On rear panel
Cooling	Built – In Forced – Air System	
Main Switch	IP-0622-H2	On rear panel, Supply voltage on/off
FUNC Switch	KTS-S25(Touch Switch)	On front panel, Amplifier En/Disable

SELF PROTECTIONS

Parameter	Specification	Remark
Over Power Alarm	56 dBm \pm 0.5 dB Shutdown	Factory Reset
Over Temp Alarm	85 $^{\circ}$ C \pm 5 $^{\circ}$ C shutdown	Factory Reset

MECHANICAL DRAWING



Created	Printed	Document Number	Revision	Manufacturer
2014/03/03	2014/3/3		A	RFcore co.,Ltd
File : RCA1822U54 Short Spec.docx				

The Specifications is subject to change before finalization

Customer Service: Tel. 82-31-708-7575

Email: sales@rfcore.com

http://www.rfcore.com