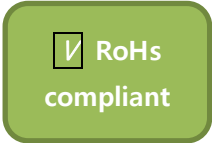


Broadband High Power Amplifier

Product Name : RCA5758H46B, Code Name :

Doc. Name : General Spec.

<p style="text-align: center;">General Specification for RCA5758H46B</p>
--



1

<p style="text-align: center;">RESTRICTION ON USE, DUPLICATION, OR DISCLOSURE OF PROPRIETARY INFORMATION</p>

This document contains proprietary information, which is the sole property of RFcore co., LTD.
The document is submitted to the recipient for his use only.
By receiving this document the recipient undertakes not to duplicate the documents or to disclose in part of, or the whole of, any of the information contained herein to any third party without receiving before hand, written permission from the submitting company.

Created	Printed	Document Number	Revision	Manufacturer
2016/11/11	2017/2/6		A	RFcore co.,Ltd
File : RCA5758H46B General Spec.docx				

The Specifications is subject to change before finalization

Customer Service: Tel. 82-31-708-7575

Email: sales@rfcore.com

<http://www.rfcore.com>

Broadband High Power Amplifier

Product Name : RCA5758H46B, Code Name :

Doc. Name : General Spec.

ELECTRICAL SPECIFICATIONS		@ 50 Ohms load, 28 Vdc, Tc = 35 °C
Parameter	Specification	Remark
Frequency Range	5700 ~ 5800 MHz	
Saturated Output Power	40 W min.	@ CW, 50 Ohms load condition
Small Signal Gain	40 dB min.	Input Level = - 15 dBm
Large Signal Gain	40 dB min.	Input Level = 0 dBm
Small Signal Gain Flatness	Peak to Peak 2 dB	Input Level = - 15 dBm
Maximum Input Power for no damage on DC ON	5 dBm max	
Input VSWR	Less than 1.5 : 1	
Output VSWR	Less than 1.5 : 1	Built in Isolator
Maximum load VSWR for amplifier survival	Infinite, all phase	
Enable/Disable Switching Time	1 ms max.	
DC Input Voltage	28 ± 1 Vdc	
Current Consumption	6.5 A max. 5.5 A Typ.	@ Pout = 40 W CW
RF Input Signal Format	CW	
I/O Interface (Filtered D-Sub 9Pin Male with 3000pF)	1. Enable(Active Low)	Pulled-up @ 5V with 10kohm
	2. Forward Power Detector	Logarithmic detector Log Slope : =0.05V/dB
	3. N.C	
	4. Reflected Power Detector	Logarithmic detector Log Slope : =0.05V/dB
	5. Temperature Monitor	VT= 10(mV) * Tc(°C) + 500(mV), Tc = Case Temperature ± 5°C
	6. Vcc	
	7. Vcc	
	8. GND	
	9. GND	

2

Created	Printed	Document Number	Revision	Manufacturer
2016/11/11	2017/2/6		A	RFcore co.,Ltd
File : RCA5758H46B General Spec.docx				

The Specifications is subject to change before finalization

Customer Service: Tel. 82-31-708-7575

Email: sales@rfcore.com

http://www.rfcore.com

Broadband High Power Amplifier

Product Name : RCA5758H46B, Code Name :

Doc. Name : General Spec.

ENVIRONMENTAL SPECIFICATIONS

Parameter	Specification	Remark
Operating Case Temperature	-20 ~ +70 °C	@ Baseplate
Storage Temperature	-40 ~ +85 °C	

MECHANICAL SPECIFICATIONS

Parameter	Specification	Remark
Dimension	136 * 110 * 20 mm	
Weight	Less than 790 g	
RF Input Connector	SMA Female	
RF Output Connector	SMA Female	
I/O Interface Connector	Filter D-Sub 9Pin Male	Capacitor Value : 3000pF
Cooling	Adequate Heat-sink required	

Confidential

Created	Printed	Document Number	Revision	Manufacturer
2016/11/11	2017/2/6		A	RFcore co.,Ltd
File : RCA5758H46B General Spec.docx				

The Specifications is subject to change before finalization

Customer Service: Tel. 82-31-708-7575

Email: sales@rfcore.com

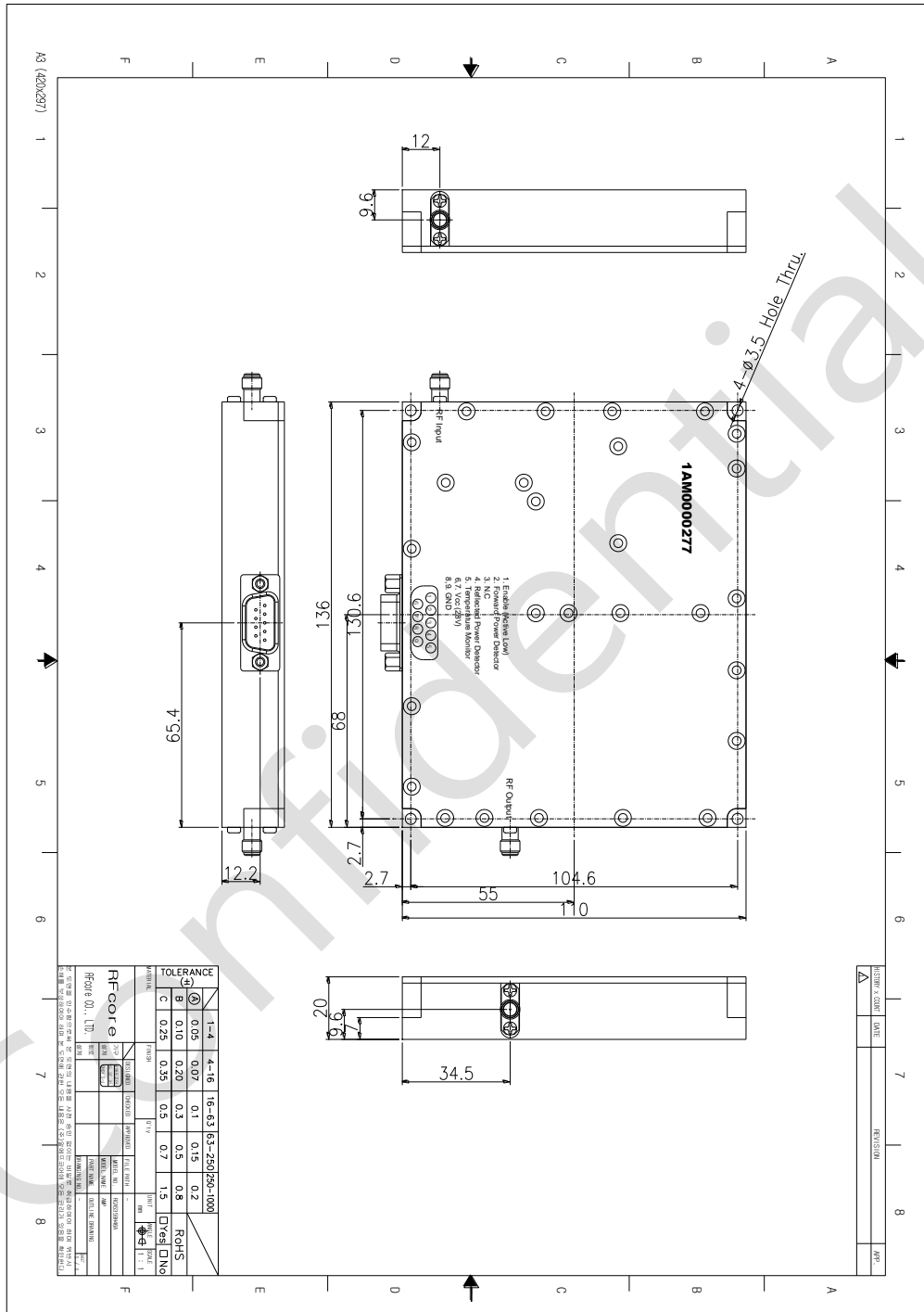
<http://www.rfcore.com>

Broadband High Power Amplifier

Product Name : RCA5758H46B, Code Name :

Doc. Name : General Spec.

MECHANICAL DRAWING



DRAWING REFERNECE: This is subject to change without notice.

Created	Printed	Document Number	Revision	Manufacturer
2016/11/11	2017/2/6		A	RFcore co.,Ltd
File : RCA5758H46B General Spec.docx				

The Specifications is subject to change before finalization

Customer Service: Tel. 82-31-708-7575

Email: sales@rfcore.com

http://www.rfcore.com