

Broadband High Power Amplifier

Product Name : RCA2030H47D2, Code Name :

Doc. Name : General Spec.

<p style="text-align: center;">General Specification for RCA2030H47D2</p>

1

<p style="text-align: center;">RESTRICTION ON USE, DUPLICATION, OR DISCLOSURE OF PROPRIETARY INFORMATION</p> <p>This document contains proprietary information, which is the sole property of Rfcore co., LTD. The document is submitted to the recipient for his use only. By receiving this document the recipient undertakes not to duplicate the documents or to disclose in part of, or the whole of, any of the information contained herein to any third party without receiving beforehand, written permission from the submitting company.</p>
--

Created	Printed	Document Number	Revision	Manufacturer
2016/9/9	2017/2/6		B	Rfcore co.,Ltd
File : RCA2030H47D2 General Spec.docx				

The Specifications is subject to change before finalization

Customer Service: Tel. 82-31-708-7575

Email: sales@rfcore.com

<http://www.rfcore.com>

Broadband High Power Amplifier

Product Name : RCA2030H47D2, Code Name :

Doc. Name : General Spec.

ELECTRICAL SPECIFICATIONS		@ 50 Ohms load, 28 Vdc, Tc = 35 °C
Parameter	Specification	Remark
Frequency Range	2000 ~ 3000 MHz	
Saturated Output Power @ 28VDC	40W min. 50 W typ.	@ CW
Saturated Output Power @ 22VDC	30 W typ., 20 W min.	@ CW
Gain @ 28VDC	47 dB min.	Input Power = -15dBm
Gain @ 22VDC	43 dB min.	Input Power = -15dBm
Gain Flatness @ 28VDC	Peak to Peak 4.0 dB	Input Power = -15dBm
Gain Flatness @ 22VDC	Peak to Peak 6.0 dB	Input Power = -15dBm
Maximum Input Power for no damage	7 dBm	
Input VSWR	Less than 2 : 1	
Maximum load VSWR for amplifier working	3.5 : 1	Works with degraded performance.
Maximum load VSWR for amplifier survival	10 : 1	
ON/OFF Switching time	Less than 1 msec	
DC Input Voltage	22 ~ 30 Vdc	
Current Consumption @ 28VDC	6.5 A typ., 7.5 A max.	@ Pout = 40W CW
Current Consumption @ 22VDC	3.5 A typ., 4.5 A max.	@ Pout = 20W CW
RF Input Signal Format	CW	

2

Created	Printed	Document Number	Revision	Manufacturer
2016/9/9	2017/2/6		B	RFcore co.,Ltd
File : RCA2030H47D2 General Spec.docx				

The Specifications is subject to change before finalization

Customer Service: Tel. 82-31-708-7575

Email: sales@rfcore.com

http://www.rfcore.com

Broadband High Power Amplifier

Product Name : RCA2030H47D2, Code Name :

Doc. Name : General Spec.

Interface Pin Description

Connector	Description	Specification
I/O Interface(D-Sub 9Pin Male)	1. Enable (Active low)	Pulled-up @ 5V with 10kohm
	2. Forward Power Monitor	Logarithmic Detector(0.05V/dB)
	3. Do not connect	
	4. Reflected Power Monitor	Logarithmic Detector(0.05V/dB)
	5. Temperature Monitor	$V_T = 10(\text{mV}) * T_c(^{\circ}\text{C}) + 500(\text{mV})$, $T_c = \text{Case Temperature} \pm 5^{\circ}\text{C}$
	6. VCC	
	7. VCC	
	8. GND	
	9. GND	

ENVIRONMENTAL SPECIFICATIONS

Parameter	Specification	Remark
Operating Case Temperature	-20 ~ +70 °C	
Storage Temperature	-40 ~ +85 °C	

3

MECHANICAL SPECIFICATIONS

Parameter	Specification	Remark
Dimension	145 * 95 * 25 mm	
Weight	Less than 650 g	
RF Input Connector	SMA Female	
RF Output Connector	SMA Female	
I/O Interface Connector	D-Sub 9Pin Male	
Cooling	Adequate Heat-sink required	

Created	Printed	Document Number	Revision	Manufacturer
2016/9/9	2017/2/6		B	RFcore co.,Ltd
File : RCA2030H47D2 General Spec.docx				

The Specifications is subject to change before finalization

Customer Service: Tel. 82-31-708-7575

Email: sales@rfcore.com

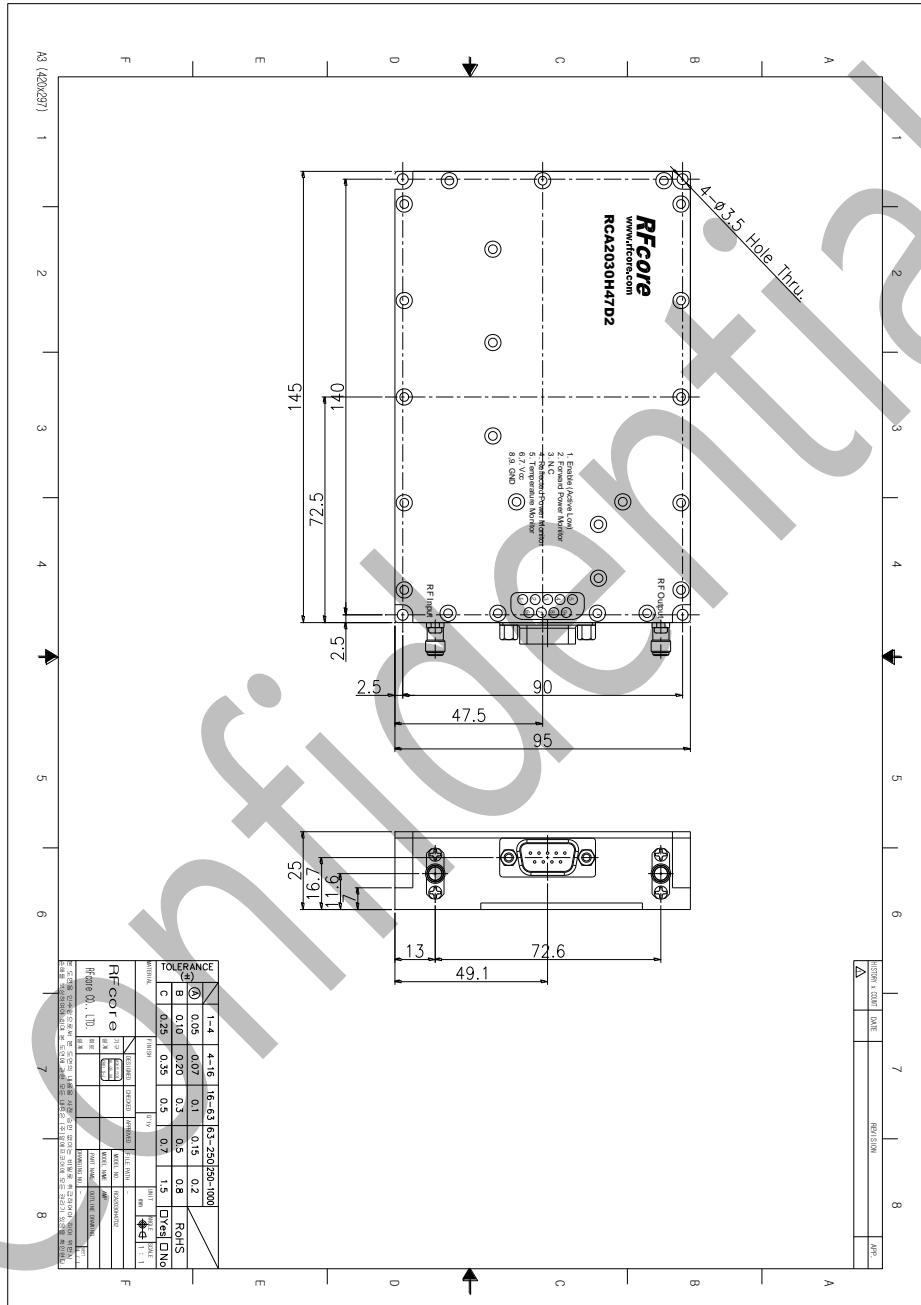
<http://www.rfcore.com>

Broadband High Power Amplifier

Product Name : RCA2030H47D2, Code Name :

Doc. Name : General Spec.

MECHANICAL DRAWING



DRAWING REFERNECE: This is subject to change without notice.

Created	Printed	Document Number	Revision	Manufacturer
2016/9/9	2017/2/6		B	RFcore co.,Ltd
File : RCA2030H47D2 General Spec.docx				

The Specifications is subject to change before finalization

Customer Service: Tel. 82-31-708-7575

Email: sales@rfcore.com

http://www.rfcore.com