

# Broadband High Power Amplifier

Product Name : RCA2025H44E

Doc. Name : General Spec.

---

## General Specification for RCA2025H44E

RoHs  
compliant

1

### RESTRICTION ON USE, DUPLICATION, OR DISCLOSURE OF PROPRIETARY INFORMATION

This document contains proprietary information, which is the sole property of RFcore co., LTD.

The document is submitted to the recipient for his use only.

By receiving this document the recipient undertakes not to duplicate the documents or to disclose in part of, or the whole of, any of the information contained herein to any third party without receiving before hand, written permission from the submitting company.

Created	Printed	Document Number	Revision	Manufacturer
2011/12/14	2017/2/6		D	<b>RFcore co.,Ltd</b>
File : RCA2025H44E General Spec_revD.docx				

*The Specifications is subject to change before finalization*

Customer Service: Tel. 82-31-708-7575

Email: sales@rfcore.com

<http://www.rfcore.com>

# Broadband High Power Amplifier

Product Name : RCA2025H44E

Doc. Name : General Spec.

ELECTRICAL SPECIFICATIONS		@ 50 Ohms load, 28 Vdc, Tc = 35 °C
Parameter	Specification	Remark
Frequency Range	2000 ~ 2500 MHz	
Saturated Output Power	25 W min.	@ CW
Small Signal Gain @ Center Frequency	45 ± 1.0 dB	Input level = -15dBm ,
Gain Flatness	Peak to Peak 3.0 dB	Input level = -15dBm
Maximum Input Power for no damage on DC ON	5 dBm max	
Maximum Input Power for no damage on DC OFF	20 dBm max	
Input VSWR	Less than 1.5 : 1	
Output VSWR	Less than 2.0 : 1	Built-in Isolator
Handling VSWR at the output	10 : 1	@ MAX output power and base plate temperature of 75°C
Enable/Disable time	10uS max.	
DC Input Current	4.0 A max, 2.5A typ.	@ Pout = 25W
DC Input Voltage	+28 ± 1.0 Vdc	
I/O Map	1. Enable (Active low)	pulled-up@5V with 10KΩ
	2. Forward Power Monitor	4 ±0.2V @CW 44dBm, slope : 0.1V/dB Vpin2=4-(44-Pout)x0.1±0.2V
	3. Do not connect	
	4. Reflected Power Monitor	Vpin4 is Diode type Detector. Diode has non-linear log slope characteristic.
	5. Do not connect	
	6, 7. Vcc	
	8,9. GND	

ENVIRONMENTAL SPECIFICATIONS		
Parameter	Specification	Remark
Operating Case Temperature	-20 ~ 75 °C	
Storage Temperature	-40 ~ 85 °C	

MECHANICAL SPECIFICATIONS		
Parameter	Specification	Remark
Dimension	110 x 90 x 22 mm	
RF Input / Output Connector	SMA – Female	
DC & Interface Connector	D – Sub 9 Pin Male	

Created	Printed	Document Number	Revision	Manufacturer
2011/12/14	2017/2/6		D	<b>RFcore co.,Ltd</b>
File : RCA2025H44E General Spec_revD.docx				

The Specifications is subject to change before finalization

Customer Service: Tel. 82-31-708-7575

Email: sales@rfcore.com

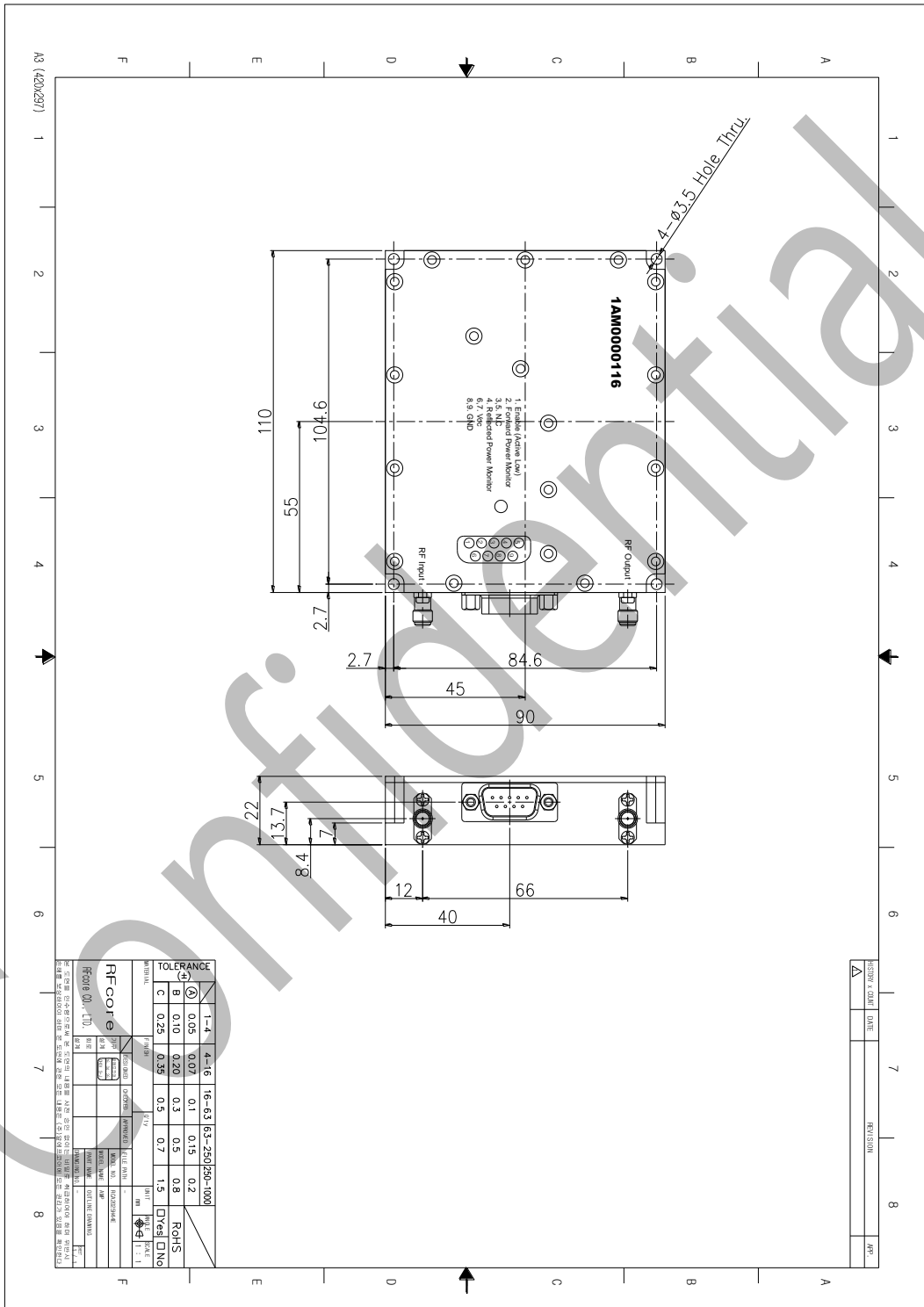
http://www.rfcore.com

# Broadband High Power Amplifier

Product Name : RCA2025H44E

Doc. Name : General Spec.

## MECHANICAL DRAWING



Created	Printed	Document Number	Revision	Manufacturer
2011/12/14	2017/2/6		D	<b>RFcore co.,Ltd</b>
File : RCA2025H44E General Spec_revD.docx				

The Specifications is subject to change before finalization

Customer Service: Tel. 82-31-708-7575  
 Email: sales@rfcore.com  
 http://www.rfcore.com