

# Broadband High Power Amplifier

Product Name : RCA0722H50S, Code Name : C8Y3SD3EN50

Doc. Name : General Spec.

---

<p style="text-align: center;"><b>General Specification</b> for <b>RCA0722H50S</b></p>
--

1

### RESTRICTION ON USE, DUPLICATION, OR DISCLOSURE OF PROPRIETARY INFORMATION

This document contains proprietary information, which is the sole property of RFcore co., LTD.

The document is submitted to the recipient for his use only.

By receiving this document the recipient undertakes not to duplicate the documents or to disclose in part of, or the whole of, any of the information contained herein to any third party without receiving before hand, written permission from the submitting company.

Created	Printed	Document Number	Revision	Manufacturer
2014/2/5	2014/5/22		B	<b>RFcore co.,Ltd</b>
File : RCA0722H50S General Spec.docx				

*The Specifications is subject to change before finalization*

Customer Service: Tel. 82-31-708-7575

Email: [sales@rfcore.com](mailto:sales@rfcore.com)

<http://www.rfcore.com>

# Broadband High Power Amplifier

Product Name : RCA0722H50S, Code Name : C8Y3SD3EN50

Doc. Name : General Spec.

ELECTRICAL SPECIFICATIONS		@ 50 Ohms load, 28 Vdc, Tc ≅ 35 °C
Parameter	Specification	Remark
Frequency Range	700 ~ 2200 MHz	
Saturated Output Power	100W min.	
Small Signal Gain	50 dB min.	Input Power = - 15 dBm
Gain Flatness	Peak to Peak 6 dB	Input Power = - 15 dBm
Maximum Input Power for no damage	10 dBm max.	
Input VSWR	2 : 1 max.	
DC Input Voltage	28 ± 1 V	
Current Consumption	15A max.	@ Pout = 100 W
RF Input Signal Format	CW	
I/O Map(D-Sub 9Pin Male)	<ol style="list-style-type: none"> <li>1. Enable(Active Low)</li> <li>2. Forward Power Monitor</li> <li>3. Reserved</li> <li>4. Reserved</li> <li>5. Temperature Monitor</li> <li>6. GND</li> <li>7. Do not Connect</li> <li>8. Do not Connect</li> <li>9. Do not Connect</li> </ol>	<p>Pulled up @ 5 V with 10 kohm</p> <p>Vpin2 is Output voltage of diode detector. It has non-log slope characteristic.</p> <p>Should be connected to GND.</p> <p>VT = (0.02 V * Temp°C) + 1 V</p>

2

ENVIRONMENTAL SPECIFICATIONS		
Parameter	Specification	Remark
Operating Case Temperature	-20 ~ 60 °C	
Storage Temperature	-40 ~ 85 °C	

MECHANICAL SPECIFICATIONS		
Parameter	Specification	Remark
Dimension	225 * 180 * 25 mm	
Input / Output Connector	SMA 2H Female/SMA 4H Female	
DC Connector	3W3P(A1: +28V, A2: GND, A3: N.C)	
Control Connector	D-Sub 9Pin Male	
Cooling	Adequate Heat-sink required	

Created	Printed	Document Number	Revision	Manufacturer
2014/2/5	2014/5/22		B	<b>RFcore co.,Ltd</b>
File : RCA0722H50S General Spec.docx				

The Specifications is subject to change before finalization

Customer Service: Tel. 82-31-708-7575

Email: sales@rfcore.com

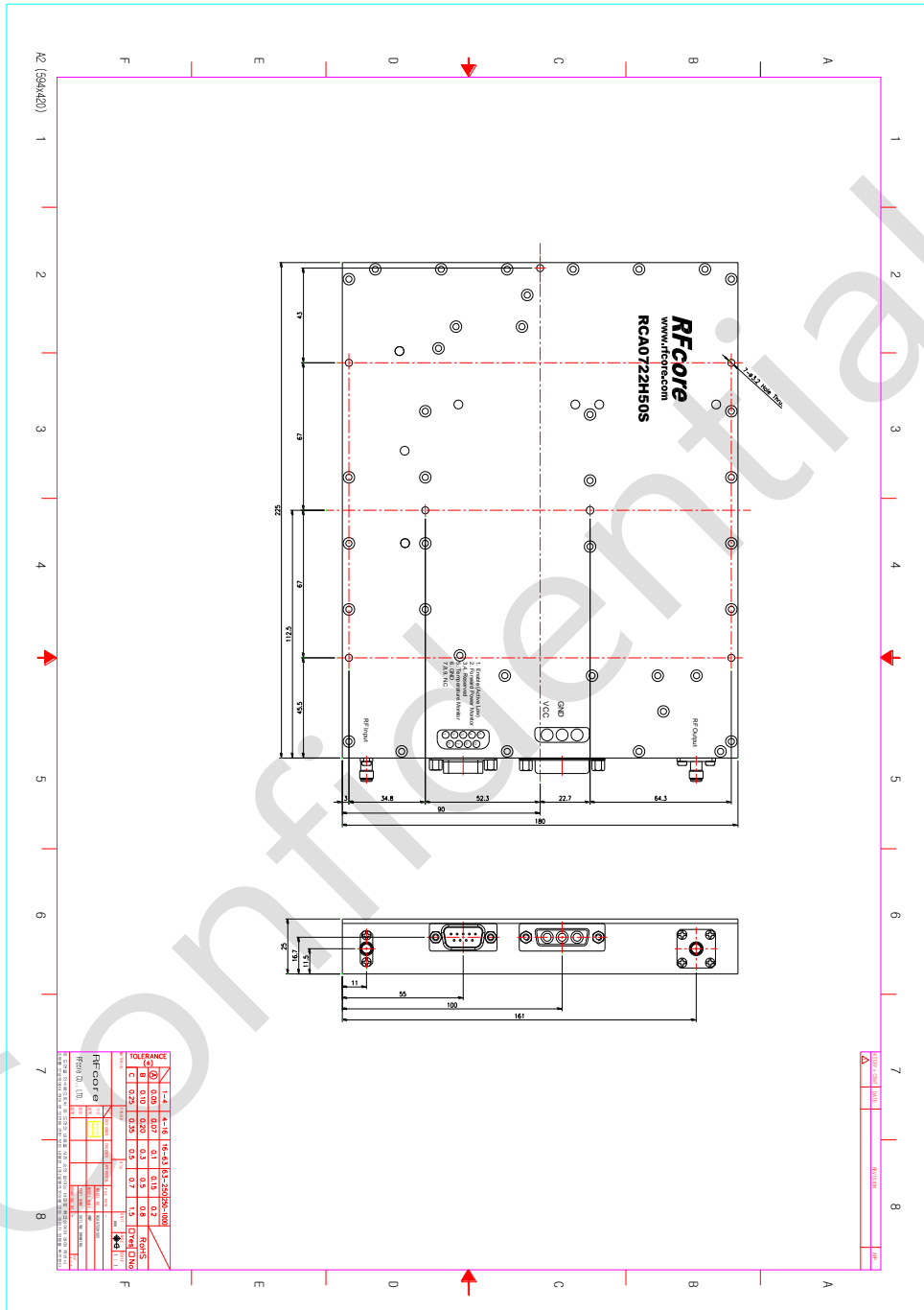
http://www.rfcore.com

# Broadband High Power Amplifier

Product Name : RCA0722H50S, Code Name : C8Y3SD3EN50

Doc. Name : General Spec.

## MECHANICAL DRAWING



DRAWING REFERNECE: This is subject to change without notice.

Created	Printed	Document Number	Revision	Manufacturer
2014/2/5	2014/5/22		B	RFCore co.,Ltd
File : RCA0722H50S General Spec.docx				

The Specifications is subject to change before finalization

Customer Service: Tel. 82-31-708-7575

Email: sales@rfcore.com

http://www.rfcore.com