

Broadband High Power Amplifier

Product Name : RCA2600H52B

Doc. Name : General Spec.

<p style="text-align: center;">General Specification for RCA2600H52B</p>
--

1

<p style="text-align: center;">RESTRICTION ON USE, DUPLICATION, OR DISCLOSURE OF PROPRIETARY INFORMATION</p> <p>This document contains proprietary information, which is the sole property of RFcore co., LTD. The document is submitted to the recipient for his use only. By receiving this document the recipient undertakes not to duplicate the documents or to disclose in part of, or the whole of, any of the information contained herein to any third party without receiving before hand, written permission from the submitting company.</p>

Created	Printed	Document Number	Revision	Manufacturer
2014/2/20	2014/2/21		A	RFcore co.,Ltd
File : RCA2600H52B General Spec.docx				

The Specifications is subject to change before finalization

Customer Service: Tel. 82-31-708-7575

Email: sales@rfcore.com

<http://www.rfcore.com>

Broadband High Power Amplifier

Product Name : RCA2600H52B

Doc. Name : General Spec.

ELECTRICAL SPECIFICATIONS		@ 50 Ohms load, 28 Vdc, Tc ≅ 35 °C
Parameter	Specification	Remark
Frequency Range	2620 ~ 2695 MHz	
Saturated Output Power	150 W min.	
Small Signal Gain	55 ± 1 dB	Input Level = - 15 dBm
Small Signal Gain Flatness	Peak to Peak 2 dB	Input Level = - 15 dBm
Maximum Input Power for no damage	5 dBm max	
Input / Output VSWR	Less than 1.5 : 1	
Current Consumption	20 A max.	@ Pout = 150 W
DC Input Voltage	28 ± 1 V	
I/O Map	1. N.C	
	2. Temperature Monitor	VT=(0.02*Tc)+1V Tc = Case Temperature± 5°C
	3. Enable (Active Low)	Pulled up @ 5 V with 10 kohm
	4. N.C	
	5. VSWR Fail Alarm	Alarm : TTL High
	6. GND	
	7. Power Monitor	3.5 ± 0.3 V @ 52 dBm, Log slope : 0.1V/dB Vpin7 = 3.5-(52-Pout) * 0.1 ± 0.3 V
	8. N.C	
	9. N.C	

2

Created	Printed	Document Number	Revision	Manufacturer
2014/2/20	2014/2/21		A	RFcore co.,Ltd
File : RCA2600H52B General Spec.docx				

The Specifications is subject to change before finalization

Customer Service: Tel. 82-31-708-7575

Email: sales@rfcore.com

http://www.rfcore.com

Broadband High Power Amplifier

Product Name : RCA2600H52B

Doc. Name : General Spec.

ENVIRONMENTAL SPECIFICATIONS		
Parameter	Specification	Remark
Operating Case Temperature	-20 ~ 70 °C	
Storage Temperature	-40 ~ 85 °C	

MECHANICAL SPECIFICATIONS		
Parameter	Specification	Remark
Dimension	250 * 170 *28 mm	
RF Input Connector	SMA Female	
RF Output Connector	N- Female	
DC Power Connector	D – SUB 3W3P(A1 : Vcc, A2 : GND, A3 : N.C)	
Control Connector	D – SUB 9Pin Male	
Cooling	Adequate Heat-sink required	

Created	Printed	Document Number	Revision	Manufacturer
2014/2/20	2014/2/21		A	RFcore co.,Ltd
File : RCA2600H52B General Spec.docx				

The Specifications is subject to change before finalization

Customer Service: Tel. 82-31-708-7575

Email: sales@rfcore.com

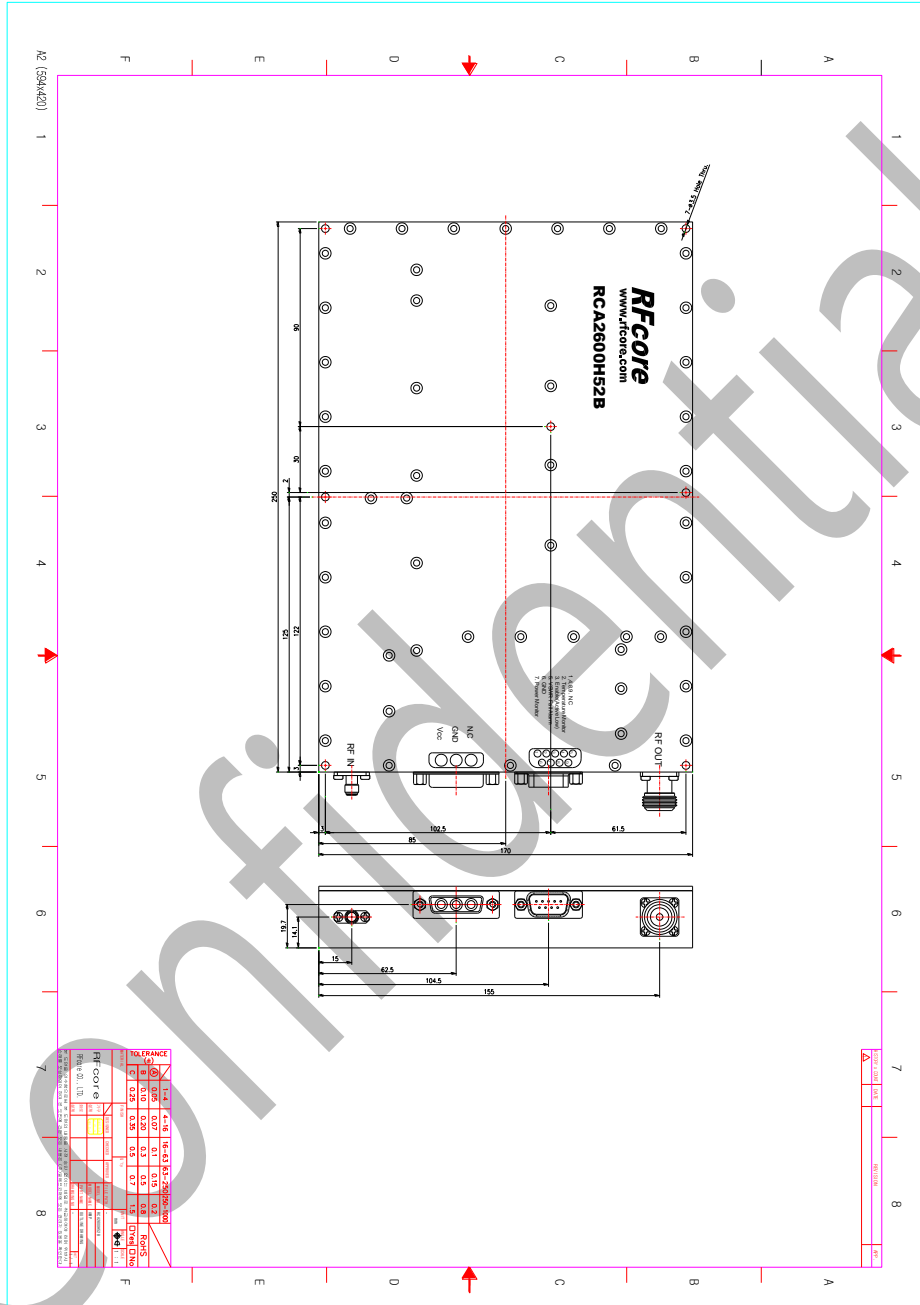
<http://www.rfcore.com>

Broadband High Power Amplifier

Product Name : RCA2600H52B

Doc. Name : General Spec.

MECHANICAL DRAWING



DRAWING REFERNECE: This is subject to change without notice.

Created	Printed	Document Number	Revision	Manufacturer
2014/2/20	2014/2/21		A	Rfcore co.,Ltd
File : RCA2600H52B General Spec.docx				

The Specifications is subject to change before finalization

Customer Service: Tel. 82-31-708-7575

Email: sales@rfcore.com

http://www.rfcore.com