

Band-Specific High Power Amplifier

Product Name : RCA2600H50A

Doc. Name : General Spec.

<p style="text-align: center;">General Specification for RCA2600H50A</p>
--

1

<p style="text-align: center;">RESTRICTION ON USE, DUPLICATION, OR DISCLOSURE OF PROPRIETARY INFORMATION</p> <p>This document contains proprietary information, which is the sole property of RFcore co., LTD. The document is submitted to the recipient for his use only. By receiving this document the recipient undertakes not to duplicate the documents or to disclose in part of, or the whole of, any of the information contained herein to any third party without receiving before hand, written permission from the submitting company.</p>

Created	Printed	Document Number	Revision	Manufacturer
2011/10/12	2017/2/6		B	RFcore co.,Ltd
File : RCA2600H50A General Spec_revB.docx				

The Specifications is subject to change before finalization

Customer Service: Tel. 82-31-708-7575

Email: sales@rfcore.com

<http://www.rfcore.com>

Band-Specific High Power Amplifier

Product Name : RCA2600H50A

Doc. Name : General Spec.

ELECTRICAL SPECIFICATIONS		@ 50 Ohms load, 28 Vdc, Tc ≈ 35 °C
Parameter	Specification	Remark
Frequency Range	2620 ~ 2695 MHz	
Saturated Output Power	100W min.	CW
Small Signal Gain	50 ± 1.0 dB	@ Input level = -15dBm
Small Signal Gain Flatness	Peak to Peak 2.0 dB	@ Input level = -15dBm
Maximum Input Power	7 dBm max.	
Input / Output VSWR	Less than 1.5 : 1	
DC Input Current	13.0 A typ. , 14 A max	@ Pout = 100W
DC Input Voltage	28Vdc ± 1.0Vdc	
I/O Map	1. GND	
	2,3,7. N.C	
	4. Temperature Monitor	Vout = 3.6-0.022*(T-30)
	5. Over Temp. Alarm	Alarm & Shutdown : High(5V) @ case temp. 85 ± 5°C Auto Restart : LOW(0V) @ case temp. 65 ± 5°C
	6. Enable (Active Low)	pulled-up@5V with 10KΩ
	8. Forward power monitor	4V ±0.1V @ 50dBm at Fcenter Detector is AD8362 (real power detector)and Note that it is not flat over frequency
	9. Reverse power Detector	4V ±0.1V @ 50dBm at Fcenter Detector is AD8362 (real power detector)and Note that it is not flat over frequency

2

ENVIRONMENTAL SPECIFICATIONS		
Parameter	Specification	Remark
Operating Ambient Temperature	-20 ~ 70 °C	
Storage Temperature	-40 ~ 85 °C	

MECHANICAL SPECIFICATIONS		
Parameter	Specification	Remark
Dimension	190 x 150 x 25 mm	
RF Input / Output Connector	SMA-Female(2H)/N-type Female	
Interface Connector	D – Sub 9 Pin Male	
DC Connector	3W3 (A1 : VCC, A2 : GND, A3 : N.C)	

Created	Printed	Document Number	Revision	Manufacturer
2011/10/12	2017/2/6		B	RFcore co.,Ltd
File : RCA2600H50A General Spec_revB.docx				

The Specifications is subject to change before finalization

Customer Service: Tel. 82-31-708-7575

Email: sales@rfcore.com

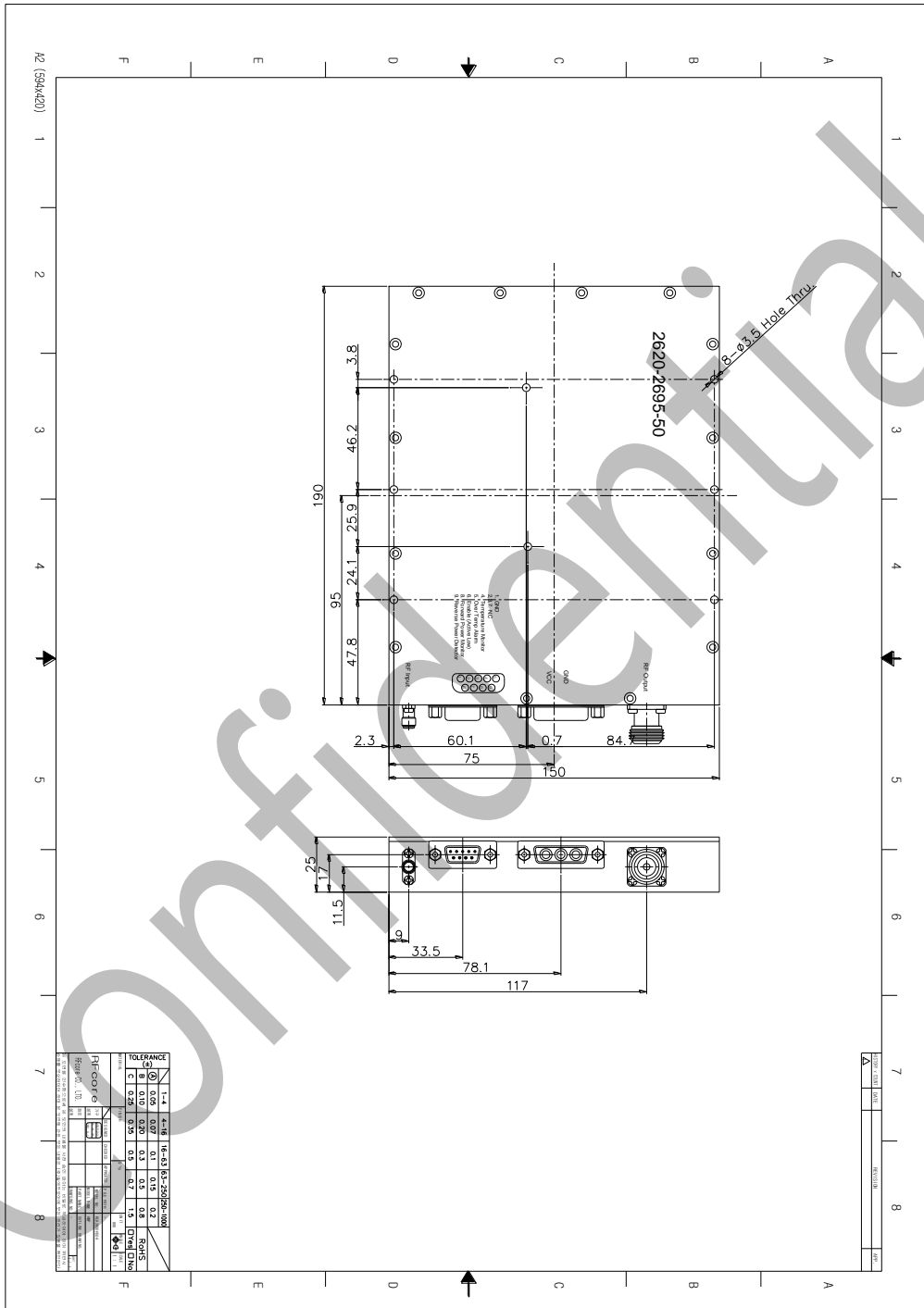
http://www.rfcore.com

Band-Specific High Power Amplifier

Product Name : RCA2600H50A

Doc. Name : General Spec.

MECHANICAL DRAWING



DRAWING REFERNECE: This is subject to change without notice.

Created	Printed	Document Number	Revision	Manufacturer
2011/10/12	2017/2/6		B	RFcore co.,Ltd
File : RCA2600H50A General Spec_revB.docx				

The Specifications is subject to change before finalization

Customer Service: Tel. 82-31-708-7575

Email: sales@rfcore.com

http://www.rfcore.com