

Band-Specific High Power Amplifier

Product Name : RCA2527H50D1

Doc. Name : Preliminary Short Spec.

**Preliminary Short Specification
for
RCA2527H50D1**

1

RESTRICTION ON USE, DUPLICATION, OR DISCLOSURE OF PROPRIETARY INFORMATION

This document contains proprietary information, which is the sole property of Rfcore co., LTD.

The document is submitted to the recipient for his use only.

By receiving this document the recipient undertakes not to duplicate the documents or to disclose in part of, or the whole of, any of the information contained herein to any third party without receiving before hand, written permission from the submitting company.

Created	Printed	Document Number	Revision	Manufacturer
2014/8/5	2015/9/8		E	Rfcore co.,Ltd
File : RCA2527H50D1_revE Short Spec.docx				

The Specifications is subject to change before finalization

Customer Service: Tel. 82-31-708-7575

Email: sales@rfcore.com

<http://www.rfcore.com>

Band-Specific High Power Amplifier

Product Name : RCA2527H50D1

Doc. Name : Preliminary Short Spec.

ELECTRICAL SPECIFICATIONS		@ 50 Ohms load, 28 Vdc, Tc ≅ 35 °C
Parameter	Specification	Remark
Frequency Range	2500 ~ 2700 MHz	
Saturated Output Power	50 dBm min.	CW
Gain	47 dB min.	@ Input level = -15 dBm
Gain Flatness	Peak to Peak 3.0 dB	@ Input level = -15 dBm
Maximum Input Power for no damage	10 dBm max.	
Input VSWR	Less than 1.5 : 1	
Output VSWR	Less than 1.5 : 1	
DC Input Current @ Pout 50 dBm	13 A typ. , 14 A max	
DC Input Voltage	28Vdc ± 1.0Vdc	
I/O Map	1. GND	
	2. N.C	
	3. N.C	
	4. Temperature Monitor	VT= 3.6 - 0.022 x (T-30) T = Case Temperature ± 5°C
	5. Over Temp. Alarm	Alarm & Shutdown : TTL High(5V) @ case temp. 85 ± 5°C Auto Restart : TTL LOW(0V) @ case temp. 65 ± 5°C
	6. Enable (Active Low)	pulled-up@5V with 10KΩ Enable = TTL"0"= 0V or GND Disable = TTL/CMOS "1"=3.3-5V
	7. N.C	
	8. Forward power monitor	4V±0.2V @ CW 50dBm, Log slope : 0.1V/dB Vpin8 = 4-(50-Pout)x0.1±0.2V
	9. Reverse power Detector	4V±0.2V @ CW 50dBm, Log slope : 0.1V/dB Vpin9 = 4-(50-Pout)x0.1±0.2V

2

ENVIRONMENTAL SPECIFICATIONS		
Parameter	Specification	Remark
Operating Case Temperature	-20 ~ 70 °C	
Storage Temperature	-40 ~ 85 °C	

Created	Printed	Document Number	Revision	Manufacturer
2014/8/5	2015/9/8		E	RFcore co.,Ltd
File : RCA2527H50D1_revE Short Spec.docx				

The Specifications is subject to change before finalization

Band-Specific High Power Amplifier

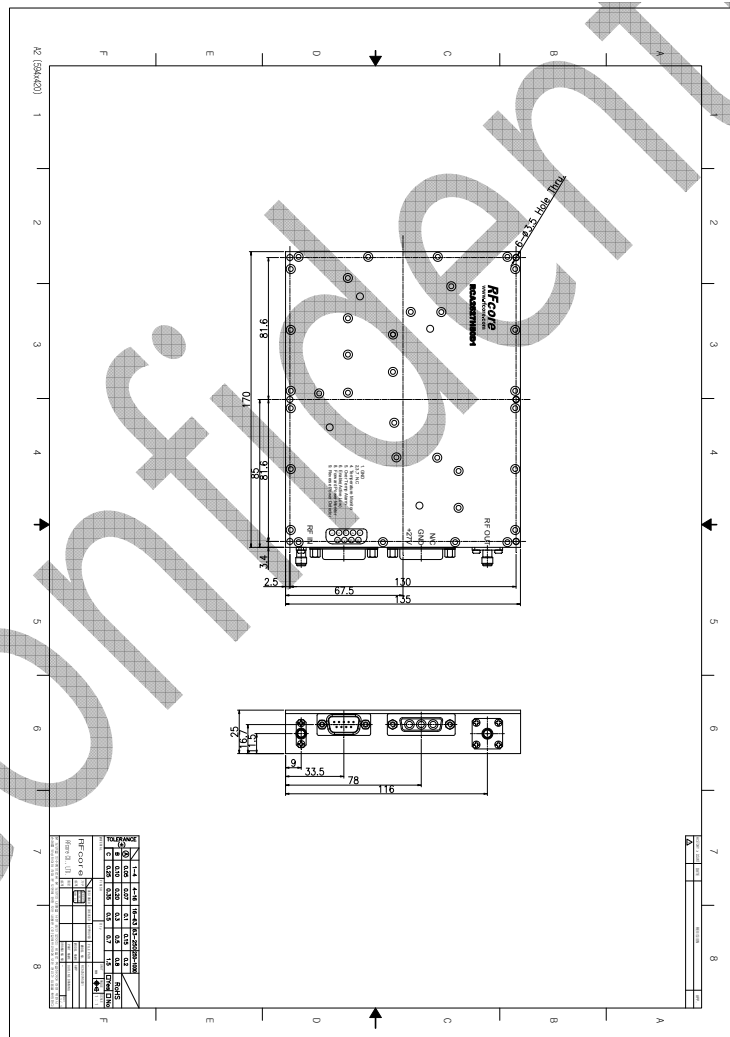
Product Name : RCA2527H50D1

Doc. Name : Preliminary Short Spec.

MECHANICAL SPECIFICATIONS

Parameter	Specification	Remark
Dimension	170 x 135 x 25 mm	
RF Input Connector	SMA-Female	
RF Output Connector	SMA-Female	
DC Connector	3W3 (A1:VCC, A2:GND, A3:N.C)	
Control Connector	D-Sub 9Pin Male	
Cooling	Adequate Heat-sink required	

MECHANICAL DRAWING



DRAWING REFERNECE: This is subject to change without notice.

Created	Printed	Document Number	Revision	Manufacturer
2014/8/5	2015/9/8		E	RFcore co.,Ltd
File : RCA2527H50D1_revE Short Spec.docx				

The Specifications is subject to change before finalization

Customer Service: Tel. 82-31-708-7575

Email: sales@rfcore.com

http://www.rfcore.com