

Band-Specific High Power Amplifier

Product Name : RCA2500H42B

Doc. Name : General Spec.

<p>General Specification for RCA2500H42B</p>
--

1

<p>RESTRICTION ON USE, DUPLICATION, OR DISCLOSURE OF PROPRIETARY INFORMATION</p>

This document contains proprietary information, which is the sole property of RFcore co., LTD.

The document is submitted to the recipient for his use only.

By receiving this document the recipient undertakes not to duplicate the documents or to disclose in part of, or the whole of, any of the information contained herein to any third party without receiving before hand, written permission from the submitting company.

Created	Printed	Document Number	Revision	Manufacturer
2014/6/3	2014/6/3		A	RFcore co.,Ltd
File : RCA2500H42B General Spec.docx				

The Specifications is subject to change before finalization

Customer Service: Tel. 82-31-708-7575

Email: sales@rfcore.com

<http://www.rfcore.com>

Band-Specific High Power Amplifier

Product Name : RCA2500H42B

Doc. Name : General Spec.

ELECTRICAL SPECIFICATIONS		@ 50 Ohms load, 28 Vdc, Tc = 35 °C
Parameter	Specification	Remark
Frequency Range	2500 ~ 2590 MHz	
Saturated Output Power	15 W(42dBm) min	Operating Temp. , CW
Gain	38 dB min	Input level = -15dBm, Operating Temp.
Gain Flatness	Peak to Peak 2.0 dB	Input level = -15dBm, Operating Temp. , Over Freq. band
Input VSWR	Less than 1.5 : 1	
Output VSWR	Less than 1.5 : 1	Built in Isolator
Maximum Input Power	7 dBm	
DC Current Consumption	3.0 A maximum	@ Pout = 15W, Operating Temp.
DC Input Voltage	28 ± 1.0Vdc	
I/O Map	<ol style="list-style-type: none"> 1. Enable(Active Low) 2. Forward Power Monitor 3. N.C 4. Reflected Power Monitor 5. VSWR Fail Alarm 	Pulled-up @ 5V with 10kohm 4.0±0.2V@42dBm, slope : 0.1V/dB Vpin2 = 4.0-(42-Pout)x0.1±0.2V Vpin4 is the output voltage of diode detector. Vpin4=1 ±0.1V@ Reflected Power = 37.5 ± 1.5dBm Alarm : Reflected power >36dBm @Fcenter
	6,7 Vcc	
	8,9 GND	

2

ENVIRONMENTAL SPECIFICATIONS		
Parameter	Specification	Remark
Operating Case Temperature	-20 ~ 70 °C	
Storage Temperature	-40 ~ 85 °C	

MECHANICAL SPECIFICATIONS		
Parameter	Specification	Remark
Dimension	80 x 95 x 22 mm	
RF Input / Output Connector	SMA – Female	
Interface Connector	D-Sub 9Pin Male	

Created	Printed	Document Number	Revision	Manufacturer
2014/6/3	2014/6/3		A	RFcore co.,Ltd
File : RCA2500H42B General Spec.docx				

The Specifications is subject to change before finalization

Customer Service: Tel. 82-31-708-7575

Email: sales@rfcore.com

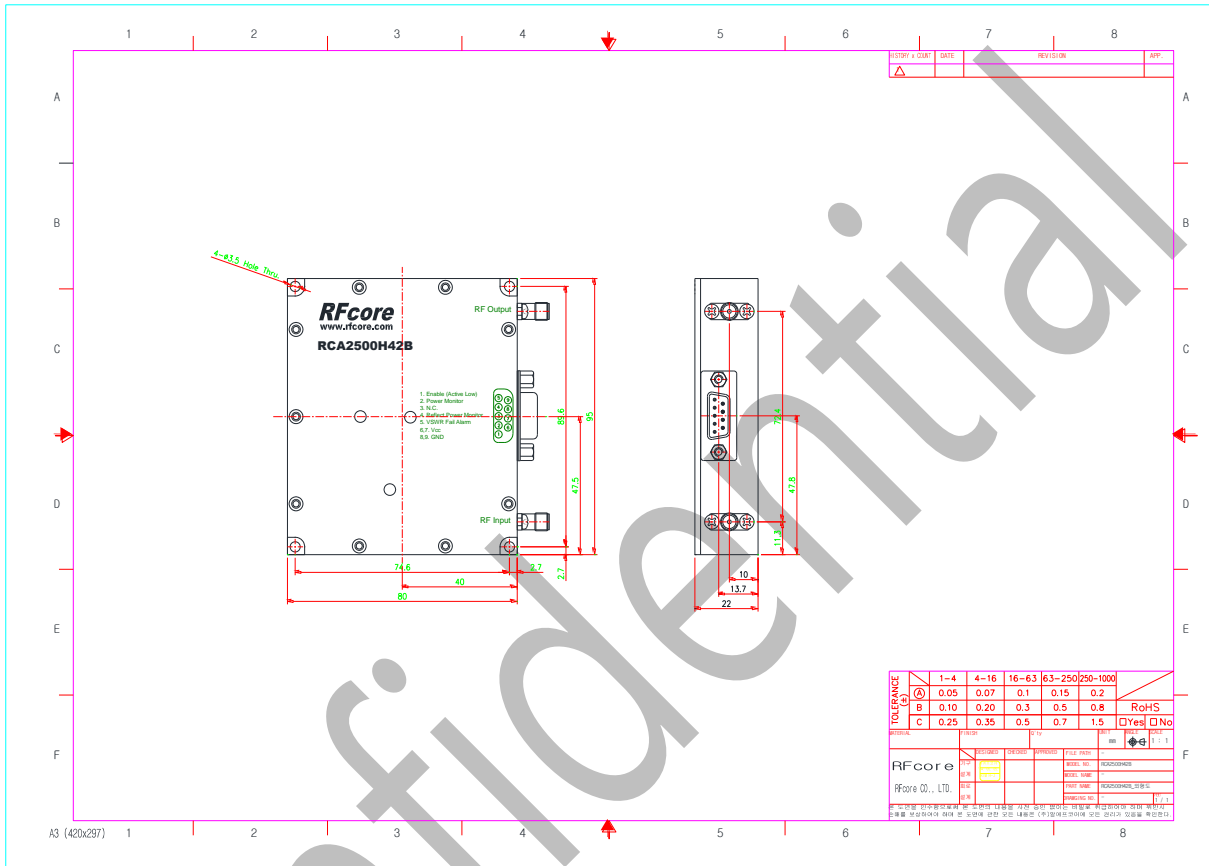
http://www.rfcore.com

Band-Specific High Power Amplifier

Product Name : RCA2500H42B

Doc. Name : General Spec.

MECHANICAL DRAWING



DRAWING REFERNECE: This is subject to change without notice.

Created	Printed	Document Number	Revision	Manufacturer
2014/6/3	2014/6/3		A	RFcore co.,Ltd
File : RCA2500H42B General Spec.docx				

The Specifications is subject to change before finalization