

Broadband High Power Amplifier

Product Name : RCA2427H44A

Doc. Name : Preliminary Short Spec.

**Preliminary Short Specification
for
RCA2427H44A**

RoHs
compliant

1

RESTRICTION ON USE, DUPLICATION, OR DISCLOSURE OF PROPRIETARY INFORMATION

This document contains proprietary information, which is the sole property of RFcore co., LTD.
The document is submitted to the recipient for his use only.

By receiving this document the recipient undertakes not to duplicate the documents or to disclose in part of, or the whole of, any of the information contained herein to any third party without receiving before hand, written permission from the submitting company.

Created	Printed	Document Number	Revision	Manufacturer
2016/3/29	2017/2/6		C	RFcore co.,Ltd
File : RCA2427H44A Short Spec_revC.docx				

The Specifications is subject to change before finalization

Customer Service: Tel. 82-31-708-7575

Email: sales@rfcore.com

<http://www.rfcore.com>

Broadband High Power Amplifier

Product Name : RCA2427H44A

Doc. Name : Preliminary Short Spec.

ELECTRICAL SPECIFICATIONS		@ 50 Ohms load, 28 Vdc, Tc = 35 °C
Parameter	Specification	Remark
Frequency Range	2400 ~ 2700 MHz	
Saturated Output Power	44 dBm min.	CW
Large signal gain	44 dB min.	Input level = 0dBm
Gain Flatness	Peak to Peak 2.0 dB	Input level = 0dBm
Input / Output VSWR	Less than 1.5 : 1	
Handling VSWR at the output	10 : 1	@VSWR of 10:1 at Max output power and base plate temp. of 75°C
Enable/disable time	10uS	
Maximum Input Power	5dBm	
DC Current Consumption	3.5A max.	@ Pout = 25W
DC Input Voltage	28 ± 1.0Vdc	
I/O Map (Filtered D-sub 9pin Male)	1. Temperature Monitor	$VT = \{0.02(V/°C) * T(°C) + 1.0V\} \pm 0.1V$ T=Case Temperature ± 5°C
	2. Forward Power Monitor	Log slop detector, 4±0.2V @ 44dBm(CW),slope : 0.1V/dB Vpin2 = 4-(44-Pout)x0.1±0.2V
	3. GND	
	4. Reflected Power Monitor	Log slop detector, slope : 0.1V/dB
	5. N.C	
	6,7. Vcc	
	8. GND	
	9. Enable (Active low)	pulled-up@5V with 10KΩ

ENVIRONMENTAL SPECIFICATIONS		
Parameter	Specification	Remark
Operating Case Temperature	-20 ~ 80 °C	
Storage Temperature	-40 ~ 85 °C	

MECHANICAL SPECIFICATIONS		
Parameter	Specification	Remark
Dimension	110 x 90 x 22 mm	
RF Input / Output Connector	SMA – Female	
DC & Interface connector	D-Sub 9Pin Male	Capacitor value : 1000pF
Cooling	Adequate Heat-sink required	

Created	Printed	Document Number	Revision	Manufacturer
2016/3/29	2017/2/6		C	RFcore co.,Ltd
File : RCA2427H44A Short Spec_revC.docx				

The Specifications is subject to change before finalization

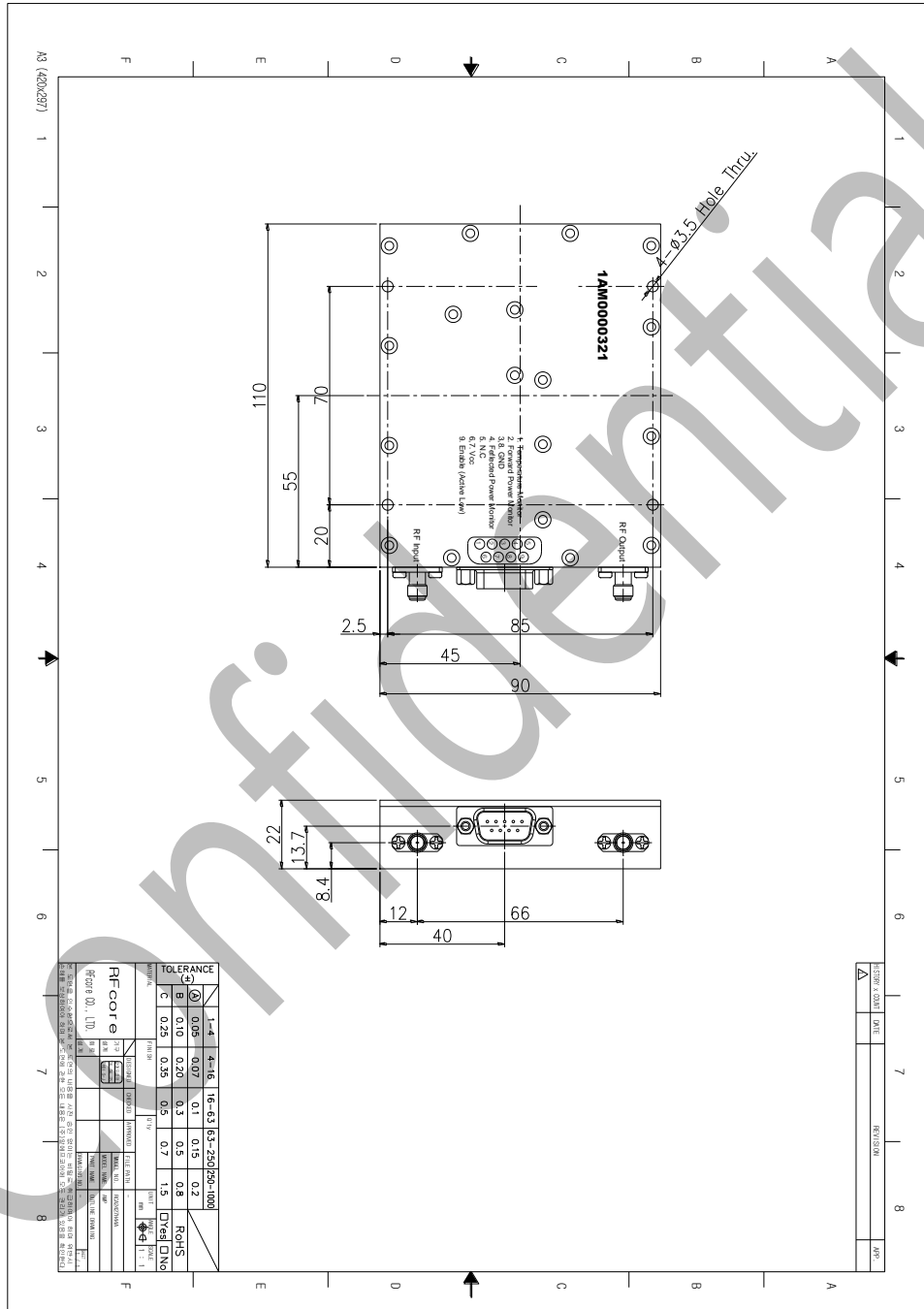
Customer Service: Tel. 82-31-708-7575
 Email: sales@rfcore.com
 http://www.rfcore.com

Broadband High Power Amplifier

Product Name : RCA2427H44A

Doc. Name : Preliminary Short Spec.

MECHANICAL DRAWING



Created	Printed	Document Number	Revision	Manufacturer
2016/3/29	2017/2/6		C	RFcore co.,Ltd
File : RCA2427H44A Short Spec_revC.docx				

The Specifications is subject to change before finalization

Customer Service: Tel. 82-31-708-7575

Email: sales@rfcore.com

http://www.rfcore.com