

Band-Specific High Power Amplifier

Product Name : RCA2425H50B, Code Name :

Doc. Name : General Spec.

<p style="text-align: center;">General Specification for RCA2425H50B</p>
--

1

<p style="text-align: center;">RESTRICTION ON USE, DUPLICATION, OR DISCLOSURE OF PROPRIETARY INFORMATION</p> <p>This document contains proprietary information, which is the sole property of RFcore co., LTD. The document is submitted to the recipient for his use only. By receiving this document the recipient undertakes not to duplicate the documents or to disclose in part of, or the whole of, any of the information contained herein to any third party without receiving before hand, written permission from the submitting company.</p>

Created	Printed	Document Number	Revision	Manufacturer
2016/12/26	2017/2/6		C	RFcore co.,Ltd
File : RCA2425H50B General Spec.docx				

The Specifications is subject to change before finalization

Customer Service: Tel. 82-31-708-7575

Email: sales@rfcore.com

<http://www.rfcore.com>

Band-Specific High Power Amplifier

Product Name : RCA2425H50B, Code Name :

Doc. Name : General Spec.

ELECTRICAL SPECIFICATIONS		@ 28 Vdc, 50 Ohms Load, Tc = 60 °C
Parameter	Specification	Remark
Frequency Range	2400 ~ 2500 MHz	
Saturated Output Power	100 W min.	@ CW, 50 ohms load condition
Gain	47 dB min.	Input = -15 dBm
Gain Flatness	Peak to Peak 1.0 dB	Input = -15 dBm
Maximum Input Power for no damage on DC ON	10 dBm max	
Input VSWR	Less than 1.5 : 1	
Output VSWR	Less than 1.5 : 1	Built in Isolator
Maximum load VSWR for amplifier survival	Infinite, all phase	
Harmonics(H2, H3)	Less than - 40 dBc	
Spurious	Less than - 60 dBc	
On/Off Switching Time	1 usec typ.	
DC Input Voltage	28 ± 1.0 Vdc	
Quiescent Current	1.5 A typ.	0.3A max. @ shutdown
DC Input Current	9 A typ. , 11 A max	Eff. > 35% @ Pout = 100 W CW
RF Input Signal Format	CW	

2

Interface Pin Description		
Connector	Description	Specification
I/O Interface(7W2)	1. Enable (Active low)	Pulled-up @ 5V with 10kohm
	2. Forward Power Monitor	Logarithmic Detector(0.05V/dB)
	3. Do not connect	
	4. Reflected Power Monitor	Logarithmic Detector(0.05V/dB)
	5. Temperature Monitor	VT= 10(mV) * Tc(°C) + 500(mV), Tc = Case Temperature± 5°C
	A1. VCC	
	A2. GND	

Created	Printed	Document Number	Revision	Manufacturer
2016/12/26	2017/2/6		C	RFcore co.,Ltd
File : RCA2425H50B General Spec.docx				

The Specifications is subject to change before finalization

Customer Service: Tel. 82-31-708-7575

Email: sales@rfcore.com

http://www.rfcore.com

Band-Specific High Power Amplifier

Product Name : RCA2425H50B, Code Name :

Doc. Name : General Spec.

ENVIRONMENTAL SPECIFICATIONS

Parameter	Specification	Remark
Operating Case Temperature	-20 ~ 70 °C	
Storage Temperature	-40 ~ 85 °C	

MECHANICAL SPECIFICATIONS

Parameter	Specification	Remark
Dimension	171 x 81 x 27 mm	
Weight	Less than 780 g	
RF Input Connector	SMA Female	
RF Output Connector	SMA Female	
I/O Interface Connector	7W2P	
Cooling	Adequate Heat-sink required	

Created	Printed	Document Number	Revision	Manufacturer
2016/12/26	2017/2/6		C	RFcore co.,Ltd
File : RCA2425H50B General Spec.docx				

The Specifications is subject to change before finalization

Customer Service: Tel. 82-31-708-7575

Email: sales@rfcore.com

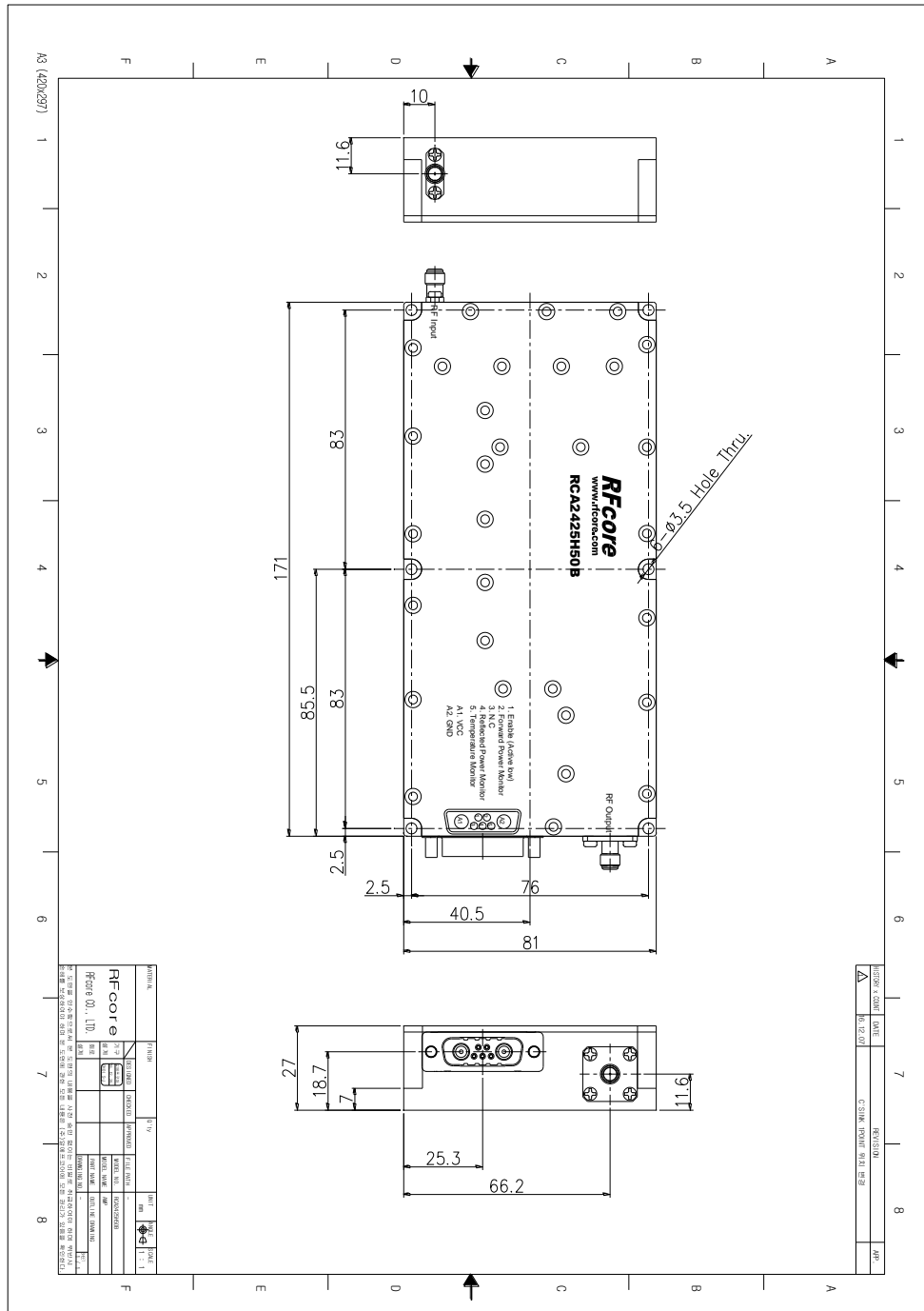
<http://www.rfcore.com>

Band-Specific High Power Amplifier

Product Name : RCA2425H50B, Code Name :

Doc. Name : General Spec.

MECHANICAL DRAWING



DRAWING REFERNECE: This is subject to change without notice.

Created	Printed	Document Number	Revision	Manufacturer
2016/12/26	2017/2/6		C	RFcore co.,Ltd
File : RCA2425H50B General Spec.docx				

The Specifications is subject to change before finalization

Customer Service: Tel. 82-31-708-7575

Email: sales@rfcore.com

http://www.rfcore.com