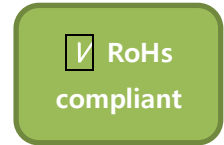


Band-specific High Power Amplifier

Product Name : RCA2400H47D , Code Name :

Doc. Name : General Spec.

General Specification for RCA2400H47D



1

RESTRICTION ON USE, DUPLICATION, OR DISCLOSURE OF PROPRIETARY INFORMATION

This document contains proprietary information, which is the sole property of RFcore co., LTD.

The document is submitted to the recipient for his use only.

By receiving this document the recipient undertakes not to duplicate the documents or to disclose in part of, or the whole of, any of the information contained herein to any third party without receiving beforehand, written permission from the submitting company.

Created	Printed	Document Number	Revision	Manufacturer
2015/6/24	2017/2/6		B	RFcore co.,Ltd
File : RCA2400H47D General Spec_revB.docx				

The Specifications is subject to change before finalization

Customer Service: Tel. 82-31-708-7575

Email: sales@rfcore.com

<http://www.rfcore.com>

Band-specific High Power Amplifier

Product Name : RCA2400H47D , Code Name :

Doc. Name : General Spec.

ELECTRICAL SPECIFICATIONS		@ 50 Ohms load, 28 Vdc, Tc ≅ 35 °C
Parameter	Specification	Remark
Frequency Range	2400 ~ 2500 MHz	
Saturated Output Power	47 dBm min.	
Gain @ Center Frequency	45 ± 1.0 dB	Input = -15 dBm
Gain Flatness	Peak to Peak 2 dB	Input = -15 dBm
Maximum Input Power for no damage	5 dBm max.	
Input / Output VSWR	Less than 1.5 : 1	
RF Input Signal Format	CW	
Current Consumption	6.0 A max.	@ 50W
DC Input Voltage	+28 ± 1.0 Vdc	
I/O Interface (D-Sub 9Pin Male)	1. Temperature Monitor	VT= 0.02(V) * Tc(°C) + 1.0(V), Tc = Case Temperature ± 5°C
	2. Forward Power Monitor	4 ± 0.1V @ CW 47dBm, slope : 0.1V/dB Vpin2 = 4-(47-Pout)x0.1±0.1V
	3. GND	
	4. Reflected Power Monitor	Vpin4 is Diode type Detector. Diode has non-linear log slope characteristic. Note : Alarm Status is not latched. Alarm is cleared once Vpin4 go down 1.4 ± 0.1Vdc
	5. VSWR Fail Alarm	Alarm : High(5V) @ Reflected power = 15~ 30W @ Fcenter
	6. Vcc	
	7. Vcc	
	8. GND	
	9. Enable (Active low)	pulled-up@5V with 10KΩ

ENVIRONMENTAL SPECIFICATIONS		
Parameter	Specification	Remark
Operating Case Temperature	-20 ~ 70 °C	
Storage Temperature	-40 ~ 85 °C	

Created	Printed	Document Number	Revision	Manufacturer
2015/6/24	2017/2/6		B	RFcore co.,Ltd
File : RCA2400H47D General Spec_revB.docx				

The Specifications is subject to change before finalization

Customer Service: Tel. 82-31-708-7575

Email: sales@rfcore.com

http://www.rfcore.com

Band-specific High Power Amplifier

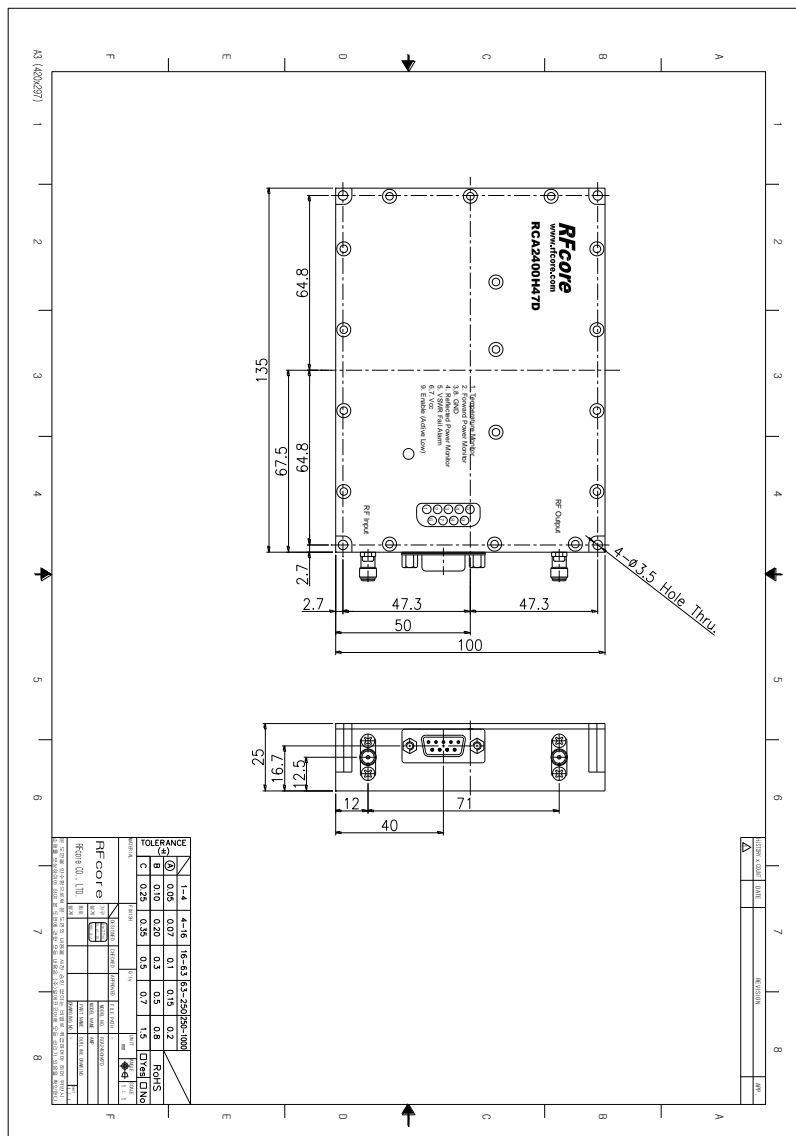
Product Name : RCA2400H47D , Code Name :

Doc. Name : General Spec.

MECHANICAL SPECIFICATIONS

Parameter	Specification	Remark
Dimension	135 * 100 *25 mm	
RF Input Connector	SMA Female	
RF Output Connector	SMA Female	
DC Power & Control Connector	D-SUB 9Pin Male	
Cooling	Adequate Heat-sink required	

MECHANICAL DRAWING



DRAWING REFERNECE: This is subject to change without notice.

Created	Printed	Document Number	Revision	Manufacturer
2015/6/24	2017/2/6		B	RFcore co.,Ltd
File : RCA2400H47D General Spec_revB.docx				

The Specifications is subject to change before finalization

Customer Service: Tel. 82-31-708-7575

Email: sales@rfcore.com

http://www.rfcore.com