

Band-Specific High Power Amplifier

Product Name : RCA2100H50D2, Code Name : A3Y3SD3OI45

Doc. Name : General Spec.

✓ RoHs
compliant

General Specification for RCA2100H50D2

1

RESTRICTION ON USE, DUPLICATION, OR DISCLOSURE OF PROPRIETARY INFORMATION

This document contains proprietary information, which is the sole property of RFcore co., LTD.

The document is submitted to the recipient for his use only.

By receiving this document the recipient undertakes not to duplicate the documents or to disclose in part of, or the whole of, any of the information contained herein to any third party without receiving before hand, written permission from the submitting company.

Created	Printed	Document Number	Revision	Manufacturer
2015/1/14	2015/1/14		B	RFcore co.,Ltd
File : RCA2100H50D2 General Spec.docx				

The Specifications is subject to change before finalization

Customer Service: Tel. 82-31-708-7575

Email: sales@rfcore.com

<http://www.rfcore.com>

Band-Specific High Power Amplifier

Product Name : RCA2100H50D2, Code Name : A3Y3SD3OI45

Doc. Name : General Spec.

ELECTRICAL SPECIFICATIONS

Parameter	Specification	Remark
Frequency Range	2110 ~ 2170 MHz	
Saturated Output Power	50 dBm min.	
Small Signal Gain @ Center Frequency	45 ± 0.5 dB	Input = -15dBm , Operating temp.
Gain Flatness	Peak to Peak 2 dB	Input = -15dBm, Over Freq Band & Temp
Gain Stability	± 1.5 dB	Operating temp.
Maximum Input Power for no damage on DC ON	10 dBm max	
Maximum Input Power for no damage on DC OFF	25 dBm max	
Input / Output VSWR	Less than 1.5 : 1	
On/Off Switching time	5µs max.	
DC Input Current	12 A max. 11 A typ.	@ Pout = 100W Tcase = 35°C
DC Input Voltage	+27 ± 1.0 Vdc	
RF Input Signal Format	CW	
I/O Map	1. GND	
	2. Do not connect	
	3. VSWR Fail Alarm	Alarm = TTL High(5V) @ Over Reflected power 20W(Current setting is 25~50W)
	4. Temperature Monitor	VT= 3.6 - 0.022 x (T-30) T = Case Temperature ± 5°C
	5. Over Temp Alarm	Alarm & Shutdown : High(5V) @ case temp. 85 ± 5°C Auto Restart : LOW(0V) @ case temp. 65 ± 5°C
	6. Enable (Active low)	pulled-up@5V with 10KΩ
	7. Do not connect	
	8. Forward Power Monitor	4V±0.1V @ CW 50dBm, slope : 0.1V/dB Vpin8 = 4-(50-Pout)x0.1±0.1V
	9. Reflected Power Monitor	Vpin9 is Diode type Detector. Diode has non-linear log slope characteristic. 0.2 ~ 1V @ 10W ~ 100W

2

Created	Printed	Document Number	Revision	Manufacturer
2015/1/14	2015/1/14		B	RFcore co.,Ltd
File : RCA2100H50D2 General Spec.docx				

The Specifications is subject to change before finalization

Customer Service: Tel. 82-31-708-7575

Email: sales@rfcore.com

http://www.rfcore.com

Band-Specific High Power Amplifier

Product Name : RCA2100H50D2, Code Name : A3Y3SD30I45

Doc. Name : General Spec.

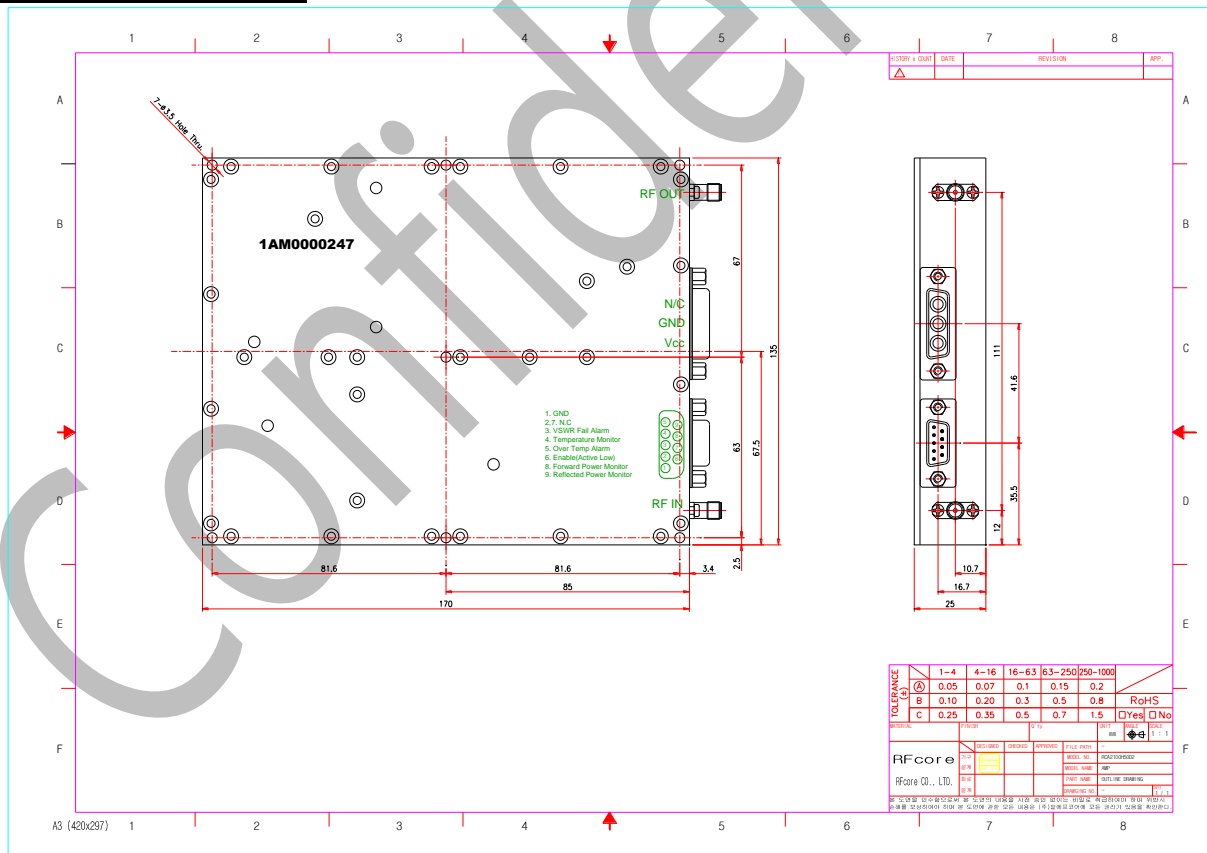
ENVIRONMENTAL SPECIFICATIONS

Parameter	Specification	Remark
Operating Case Temperature	-20 ~ 75 °C	
Storage Temperature	-40 ~ 85 °C	

MECHANICAL SPECIFICATIONS

Parameter	Specification	Remark
Dimension	170 x 135 x 25 mm	
RF Input / Output Connector	SMA – Female(2H) / SMA – Female(2H)	
DC Connector	3W3P(A1: +27V, A2: GND, A3: N.C)	
Control Connector	D-Sub 9Pin Male	
Cooling	Adequate Heat-sink required	

MECHANICAL DRAWING



Created	Printed	Document Number	Revision	Manufacturer
2015/1/14	2015/1/14		B	RFcore co.,Ltd
File : RCA2100H50D2 General Spec.docx				

The Specifications is subject to change before finalization