

Band-Specific High Power Amplifier

Product Name : RCA1900H44CWB

Doc. Name : Preliminary Short Spec.

**Preliminary Short Specification
for
RCA1900H44CWB**

1

RESTRICTION ON USE, DUPLICATION, OR DISCLOSURE OF PROPRIETARY INFORMATION

This document contains proprietary information, which is the sole property of RFcore co., LTD.

The document is submitted to the recipient for his use only.

By receiving this document the recipient undertakes not to duplicate the documents or to disclose in part of, or the whole of, any of the information contained herein to any third party without receiving before hand, written permission from the submitting company.

Created	Printed	Document Number	Revision	Manufacturer
2010/1/13	2011/12/20		A	<i>RFcore co.,Ltd</i>
File : RCA1900H44CWB Short Spec.docx				

The Specifications is subject to change before finalization

Customer Service: Tel. 82-31-708-7575

Email: sales@rfcore.com

<http://www.rfcore.com>

Band-Specific High Power Amplifier

Product Name : RCA1900H44CWB

Doc. Name : Preliminary Short Spec.

ELECTRICAL SPECIFICATIONS

Parameter	Specification	Remark
Frequency Range	1930 ~ 1990 MHz	
Saturated Output Power	25 W typical	Tcase = 35°C
Small Signal Gain	40 ± 1.0 dB	Input = -15dBm , Tcase = 35°C
Gain Flatness	Peak to Peak 2.0 dB	Input = -15dBm, Over Freq Band
Maximum Input Power	7 dBm max	
Input VSWR	Less than 1.5 : 1	
Output VSWR	Less than 1.5 : 1	
DC Input Current	3 A max	@ Pout = 25W Tcase = 35°C
DC Input Voltage	+27 ± 1.0 Vdc	
RF Input Signal Format	CW	
I/O Map	<ol style="list-style-type: none"> 1. Temperature Monitor 2. Power Monitor : Log Slope detector 3, 8. N.C 4. Reflect Power Monitor 5. VSWR Fail Alarm 6. Vcc +27V 7. GND 9. Enable (Active low) 	VT={0.02(V) x T(°C)}+1(V) @CW 44dBm, slope : 0.1VdB Vpin2=4-(44-Pout)x0.1±0.1V Vpin4=1.4V±0.1V Reflect power=39.5±1.5dBm 38dBm<Reflect power<41dBm pulled-up@5V with 10KΩ

2

ENVIRONMENTAL SPECIFICATIONS

Parameter	Specification	Remark
Operating Ambient Temperature	-20 ~ 60 °C	
Storage Temperature	-40 ~ 80 °C	

MECHANICAL SPECIFICATIONS

Parameter	Specification	Remark
Dimension	110 x 90 x 22 mm	
RF Input / Output Connector	SMA – Female	
DC & Interface Connector	D – Sub 9 Pin Male	

Created	Printed	Document Number	Revision	Manufacturer
2010/1/13	2011/12/20		A	RFcore co.,Ltd
File : RCA1900H44CWB Short Spec.docx				

The Specifications is subject to change before finalization

Customer Service: Tel. 82-31-708-7575

Email: sales@rfcore.com

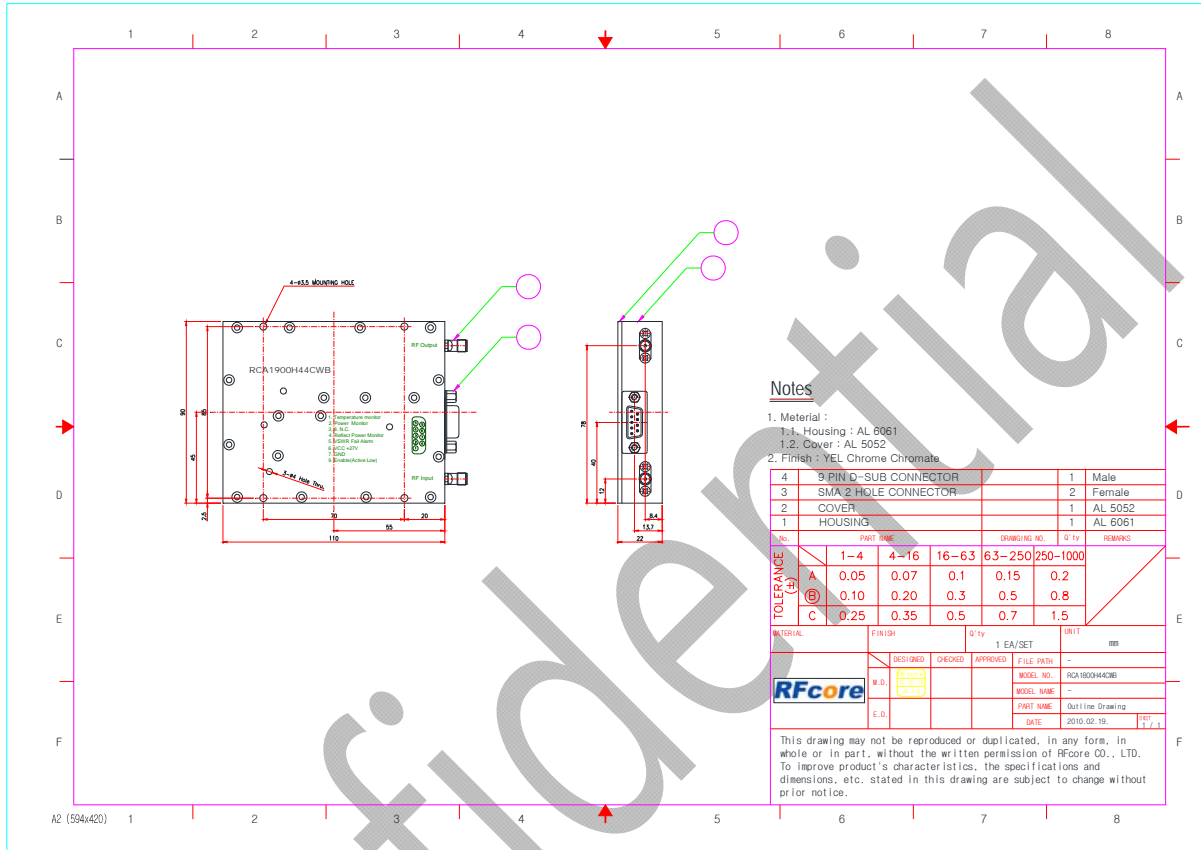
http://www.rfcore.com

Band-Specific High Power Amplifier

Product Name : RCA1900H44CWB

Doc. Name : Preliminary Short Spec.

MECHANICAL DRAWING



Created	Printed	Document Number	Revision	Manufacturer
2010/1/13	2011/12/20		A	RFcore co.,Ltd
File : RCA1900H44CWB Short Spec.docx				

The Specifications is subject to change before finalization

Customer Service: Tel. 82-31-708-7575

Email: sales@rfcore.com

http://www.rfcore.com