

# Band-Specific High Power Amplifier

Product Name : RCA1800H44C , Code Name : B2Y6SD3UI40

Doc. Name : General Spec.

---

<p><b>General Specification</b> for <b>RCA1800H44C</b></p>
--

1

<p><b>RESTRICTION ON USE, DUPLICATION, OR DISCLOSURE OF PROPRIETARY INFORMATION</b></p>
---

This document contains proprietary information, which is the sole property of RFcore co., LTD.

The document is submitted to the recipient for his use only.

By receiving this document the recipient undertakes not to duplicate the documents or to disclose in part of, or the whole of, any of the information contained herein to any third party without receiving before hand, written permission from the submitting company.

Created	Printed	Document Number	Revision	Manufacturer
2010/8/11	2017/2/6		B	<b>RFcore co.,Ltd</b>
File : RCA1800H44C General Spec.docx				

*The Specifications is subject to change before finalization*

Customer Service: Tel. 82-31-708-7575

Email: sales@rfcore.com

<http://www.rfcore.com>

# Band-Specific High Power Amplifier

Product Name : RCA1800H44C , Code Name : B2Y6SD3UI40

Doc. Name : General Spec.

## ELECTRICAL SPECIFICATIONS

Parameter	Specification	Remark
Frequency Range	1805 ~ 1880 MHz	
Saturated Output Power	44 dBm min.	
Small Signal Gain @ Center Frequency	40 ± 1.0 dB	Input = -15dBm , Operating temp.
Gain Flatness	Peak to Peak 2.0 dB	Input = -15dBm, Over Freq Band & Temp
Gain Stability	± 1.0 dB	Operating temp.
Maximum Input Power	7 dBm max	
Input VSWR	Less than 1.5 : 1	
Output VSWR	Less than 1.5 : 1	
DC Input Current	3.0 A max.	@ Pout = 25W Tcase = 35°C
DC Input Voltage	+27 ± 1.0 Vdc	
RF Input Signal Format	CW	
I/O Map	<ol style="list-style-type: none"> <li>1. Enable (Active low)</li> <li>2. Forward Power Detection</li> <li>3. N.C</li> <li>4. Reflected Power Detection</li> <li>5. N.C</li> <li>6,7. Vcc</li> <li>8,9. GND</li> </ol>	<p>pulled-up@5V with 10KΩ</p> <p>Vpin2 is Diode type Detector. Diode has non-linear log slope characteristic. Detector Table is included with a report.</p> <p>Diode type</p>

2

## ENVIRONMENTAL SPECIFICATIONS

Parameter	Specification	Remark
Operating Case Temperature	-20 ~ 70 °C	
Storage Temperature	-40 ~ 85 °C	

## MECHANICAL SPECIFICATIONS

Parameter	Specification	Remark
Dimension	80 x 95 x 22 mm	
RF Input / Output Connector	SMA – Female	
DC & Interface Connector	D – Sub 9 Pin Male	

Created	Printed	Document Number	Revision	Manufacturer
2010/8/11	2017/2/6		B	<b>RFcore co.,Ltd</b>
File : RCA1800H44C General Spec.docx				

The Specifications is subject to change before finalization

Customer Service: Tel. 82-31-708-7575

Email: sales@rfcore.com

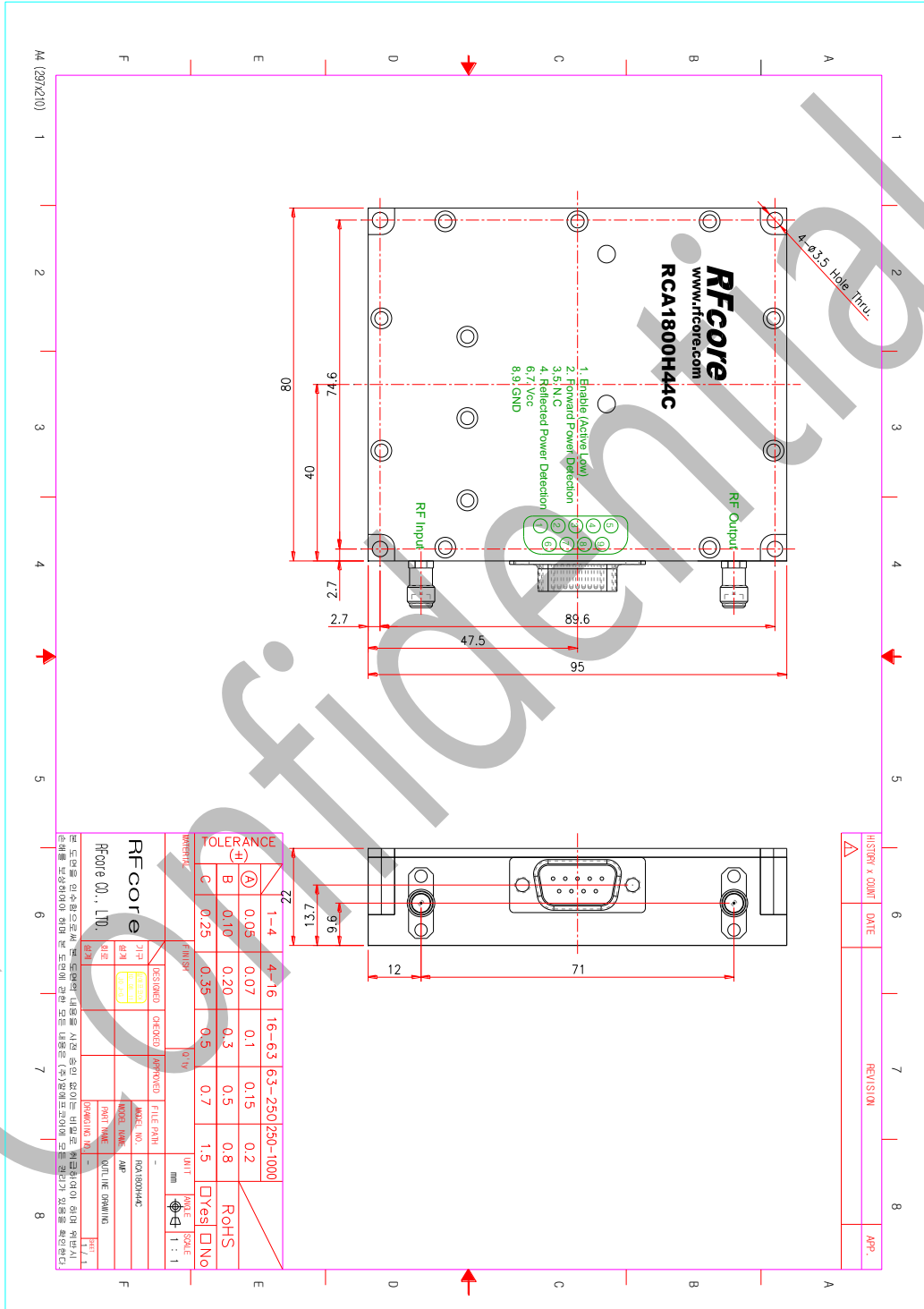
http://www.rfcore.com

# Band-Specific High Power Amplifier

Product Name : RCA1800H44C , Code Name : B2Y6SD3UI40

Doc. Name : General Spec.

## MECHANICAL DRAWING



Created	Printed	Document Number	Revision	Manufacturer
2010/8/11	2017/2/6		B	<b>RFcore co.,Ltd</b>
File : RCA1800H44C General Spec.docx				

The Specifications is subject to change before finalization

Customer Service: Tel. 82-31-708-7575

Email: sales@rfcore.com

http://www.rfcore.com