

Broadband High Power Amplifier

Product Name : RCA1500H50D

Doc. Name : General Spec.

<p style="text-align: center;">General Specification for RCA1500H50D</p>
--

1

<p style="text-align: center;">RESTRICTION ON USE, DUPLICATION, OR DISCLOSURE OF PROPRIETARY INFORMATION</p> <p>This document contains proprietary information, which is the sole property of RFcore co., LTD. The document is submitted to the recipient for his use only. By receiving this document the recipient undertakes not to duplicate the documents or to disclose in part of, or the whole of, any of the information contained herein to any third party without receiving beforehand, written permission from the submitting company.</p>
--

Created	Printed	Document Number	Revision	Manufacturer
2016/11/22	2017/1/12		C	RFcore co.,Ltd
File : RCA1500H50D General Spec.docx				

The Specifications is subject to change before finalization

Customer Service: Tel. 82-31-708-7575

Email: sales@rfcore.com

<http://www.rfcore.com>

Broadband High Power Amplifier

Product Name : RCA1500H50D

Doc. Name : General Spec.

ELECTRICAL SPECIFICATIONS		@ 50 Ohms load, 28 Vdc, Tc = 60 °C
Parameter	Specification	Remark
Frequency Range	1500 ~ 1600 MHz	
Saturated Output Power	100W min.	@ CW, 50 ohms load condition
Small Signal Gain	53 dB min	@ Pin = -15 dBm
Large Signal Gain	47 dB min	@ Pin = 0 dBm
Gain Flatness	Peak to Peak 2.0 dB	@ Pin = -15 dBm
Input Power for no damage	10 dBm	@ CW, 50 ohms load condition
Input VSWR	Less than 1.5 : 1	
Output VSWR	Less than 1.5 : 1	Built-in isolator
On/Off Switching Time	2 usec typ. 5 usec max.	
DC Input Voltage	28 ± 1.0 Vdc	
Current Consumption	12 A max. 10 A typ.	@ Pout = 100W CW, 50 ohms load
RF Input Signal Format	CW	

Interface Pin Description

Connector	Description	Specification
I/O Interface(7W2)	1. Enable (Active low)	Pulled-up @ 5V with 10kohm
	2. Forward Power Monitor	Logarithmic Detector(0.05V/dB)
	3. N.C	
	4. Reflected Power Monitor	Logarithmic Detector(0.05V/dB)
	5. Temperature Monitor	VT= 10(mV) * Tc(°C) + 500(mV), Tc = Case Temperature ± 5°C
	A1. VCC	
A2. GND		

2

Created	Printed	Document Number	Revision	Manufacturer
2016/11/22	2017/1/12		C	RFcore co.,Ltd
File : RCA1500H50D General Spec.docx				

The Specifications is subject to change before finalization

Customer Service: Tel. 82-31-708-7575

Email: sales@rfcore.com

http://www.rfcore.com

Broadband High Power Amplifier

Product Name : RCA1500H50D

Doc. Name : General Spec.

ENVIRONMENTAL SPECIFICATIONS

Parameter	Specification	Remark
Operating Case Temperature	-40 ~ +75 °C	At a hottest point of the mechanical case of amplifier module
Storage Temperature	-40 ~ +85 °C	

MECHANICAL SPECIFICATIONS

Parameter	Specification	Remark
Dimension	170 * 100 * 25 mm	w/o connectors
Weight	Less than 1100 g	
RF Input Connector	SMA Female	
RF Output Connector	SMA Female	
DC & I/O Interface Connector	7W2P	
Cooling	Adequate Heat-sink required	

Created	Printed	Document Number	Revision	Manufacturer
2016/11/22	2017/1/12		C	RFcore co.,Ltd
File : RCA1500H50D General Spec.docx				

The Specifications is subject to change before finalization

Customer Service: Tel. 82-31-708-7575

Email: sales@rfcore.com

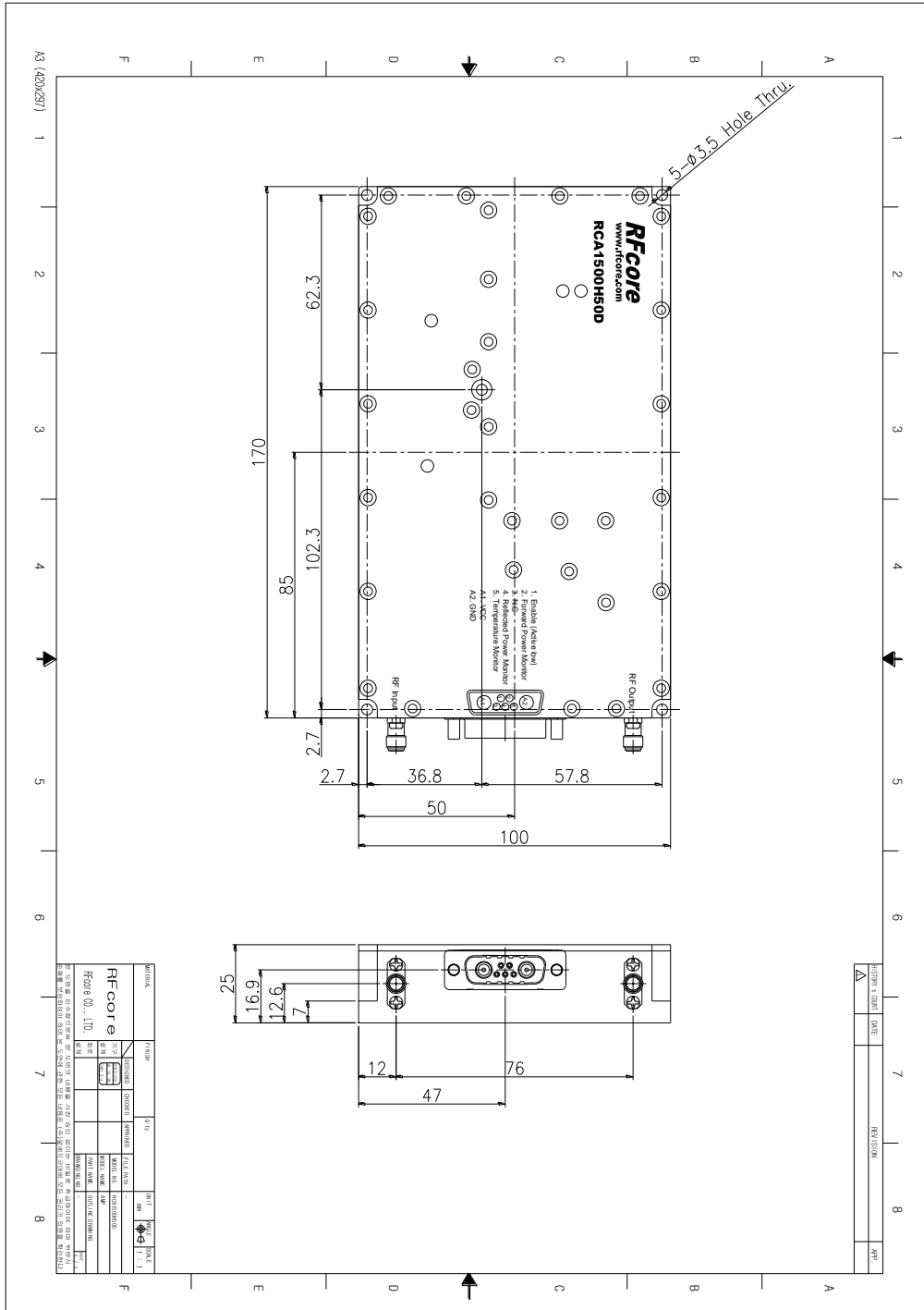
<http://www.rfcore.com>

Broadband High Power Amplifier

Product Name : RCA1500H50D

Doc. Name : General Spec.

MECHANICAL DRAWING



DRAWING REFERNECE: This is subject to change without notice.

Created	Printed	Document Number	Revision	Manufacturer
2016/11/22	2017/1/12		C	Rfcore co.,Ltd
File : RCA1500H50D General Spec.docx				

The Specifications is subject to change before finalization

Customer Service: Tel. 82-31-708-7575

Email: sales@rfcore.com

http://www.rfcore.com