

# Band-Specific High Power Amplifier

Product Name : RCA1500H37A1, Code Name :

Doc. Name : Preliminary Short Spec.

---

<p style="text-align: center;"><b>Preliminary Short Specification</b> for <b>RCA1500H37A1</b></p>
---

1

---

<p style="text-align: center;"><b>RESTRICTION ON USE, DUPLICATION, OR DISCLOSURE OF PROPRIETARY INFORMATION</b></p>
---

This document contains proprietary information, which is the sole property of RFcore co., LTD.

The document is submitted to the recipient for his use only.

By receiving this document the recipient undertakes not to duplicate the documents or to disclose in part of, or the whole of, any of the information contained herein to any third party without receiving before hand, written permission from the submitting company.

Created	Printed	Document Number	Revision	Manufacturer
2014/5/28	2017/1/12		B	<b>RFcore co.,Ltd</b>
File : RCA1500H37A1 short Spec.docx				

*The Specifications is subject to change before finalization*

Customer Service: Tel. 82-31-708-7575

Email: [sales@rfcore.com](mailto:sales@rfcore.com)

<http://www.rfcore.com>

# Band-Specific High Power Amplifier

Product Name : RCA1500H37A1, Code Name :

Doc. Name : Preliminary Short Spec.

## ELECTRICAL SPECIFICATIONS

@ 50 Ohms load, 28 Vdc, Tc = 35 °C

Parameter	Specification	Remark
Frequency Range	1500 ~ 1600 MHz	
Saturated Output Power	37 dBm min.	
Large Signal Gain	30 dB min.	Input = 4 dBm
Large Signal Gain Flatness	Peak to Peak 3 dB	Input = 4 dBm
Enable/Disable Time	10 uS max.	
Maximum Input Power - No damage	10 dBm max.	
Input VSWR	Less than 1.5 : 1	
Handling VSWR at the output	3.5 : 1 max.	
DC Input Voltage	28±1.0 Vdc, 5±1.0 Vdc	
DC Current Consumption(+28V)	700 mA max.	480 mA typ.
DC Current Consumption(+5V)	200 mA max.	140 mA typ.
I/O Map	1. GND	
	2. DC +5V	
	3. DC +28V	
	4. Enable	Pulled – up with 10Kohm Open or High(DC +5V) w/o EMI filter(apply capacitors 10pF and 33pF instead of EMI filter)
	5. Reflected Power Monitor	Diode type
	6. Forward Power Monitor	Diode type
	7. N.C	
	8. N.C	
	9. N.C	

2

## ENVIRONMENTAL SPECIFICATIONS

Parameter	Specification	Remark
Operating Case Temperature	-20 ~ 75 °C	
Storage Temperature	-40 ~ 85 °C	

Created	Printed	Document Number	Revision	Manufacturer
2014/5/28	2017/1/12		B	<b>RFcore co.,Ltd</b>
File : RCA1500H37A1 short Spec.docx				

The Specifications is subject to change before finalization

Customer Service: Tel. 82-31-708-7575

Email: sales@rfcore.com

http://www.rfcore.com

# Band-Specific High Power Amplifier

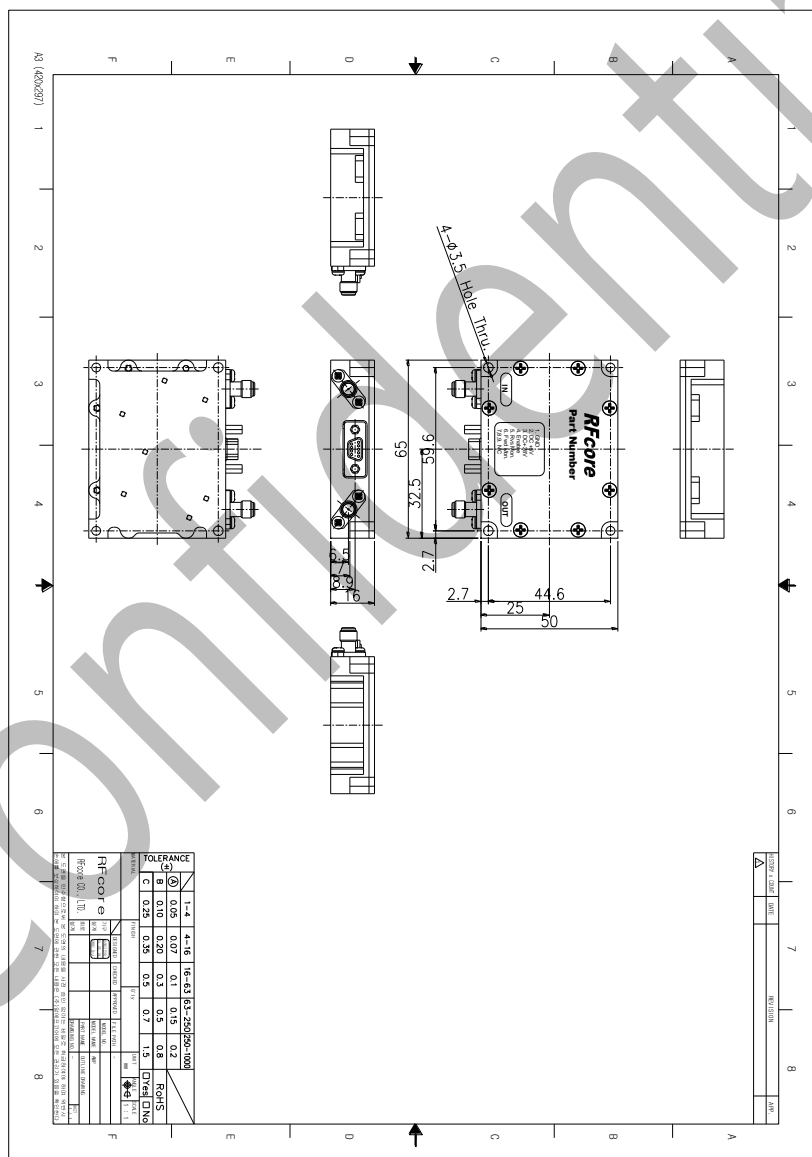
Product Name : RCA1500H37A1, Code Name :

Doc. Name : Preliminary Short Spec.

## MECHANICAL SPECIFICATIONS

Parameter	Specification	Remark
Dimension	50 x 65 x 16 mm	
Weight	Less than 100 g	
RF Input / Output Connector	SMA – Female	
Cooling	Adequate Heat-sink required	

## MECHANICAL DRAWING



DRAWING REFERNECE: This is subject to change without notice

Created	Printed	Document Number	Revision	Manufacturer
2014/5/28	2017/1/12		B	<b>RFcore co.,Ltd</b>
File : RCA1500H37A1 short Spec.docx				

The Specifications is subject to change before finalization

Customer Service: Tel. 82-31-708-7575

Email: sales@rfcore.com

http://www.rfcore.com