

Band-Specific High Power Amplifier

Product Name : RCA900H44C , Code Name : B2Y3SD3UI40

Doc. Name : Preliminary Short Spec.

<p>Preliminary Short Specification for RCA900H44C</p>

1

<p>RESTRICTION ON USE, DUPLICATION, OR DISCLOSURE OF PROPRIETARY INFORMATION</p>

This document contains proprietary information, which is the sole property of RFcore co., LTD.

The document is submitted to the recipient for his use only.

By receiving this document the recipient undertakes not to duplicate the documents or to disclose in part of, or the whole of, any of the information contained herein to any third party without receiving before hand, written permission from the submitting company.

Created	Printed	Document Number	Revision	Manufacturer
2011/12/26	2017/1/12		C	RFcore co.,Ltd
File : RCA900H44C_E850 Short Spec.docx				

The Specifications is subject to change before finalization

Customer Service: Tel. 82-31-708-7575

Email: sales@rfcore.com

<http://www.rfcore.com>

Band-Specific High Power Amplifier

Product Name : RCA900H44C , Code Name : B2Y3SD3UI40

Doc. Name : Preliminary Short Spec.

ELECTRICAL SPECIFICATIONS

Parameter	Specification	Remark
Frequency Range	850 ~ 960 MHz	
Saturated Output Power	44 dBm min.	
Small Signal Gain @ Center Frequency	40 ± 1.5 dB	Input = -15dBm , Operating temp.
Gain Flatness	Peak to Peak 3.0 dB	Input = -15dBm, Over Freq Band & Temp
Gain Stability	± 1.0 dB	Operating temp.
Maximum Input Power for no damage on DC ON	8 dBm max	
Maximum Input Power for no damage on DC OFF	20 dBm max	
Input / Output VSWR	Less than 1.5 : 1	
DC Input Current	3.5 A max.	@ Pout = 25W Tcase ≈ 35°C
DC Input Voltage	+27 ± 1.0 Vdc	
RF Input Signal Format	CW	
I/O Map	1. Enable (Active low) 2. Forward Power Detection 3. N.C 4. Reflected Power Detection 5. N.C 6,7. Vcc 8,9. GND	pulled-up@5V with 10KΩ Vpin2 is Diode type Detector. Diode has non-linear log slope characteristic. Detector Table is included with a report. Diode type

ENVIRONMENTAL SPECIFICATIONS

Parameter	Specification	Remark
Operating Case Temperature	-20 ~ 70 °C	
Storage Temperature	-40 ~ 85 °C	

Created	Printed	Document Number	Revision	Manufacturer
2011/12/26	2017/1/12		C	RFcore co.,Ltd
File : RCA900H44C_E850 Short Spec.docx				

The Specifications is subject to change before finalization

Customer Service: Tel. 82-31-708-7575

Email: sales@rfcore.com

http://www.rfcore.com

Band-Specific High Power Amplifier

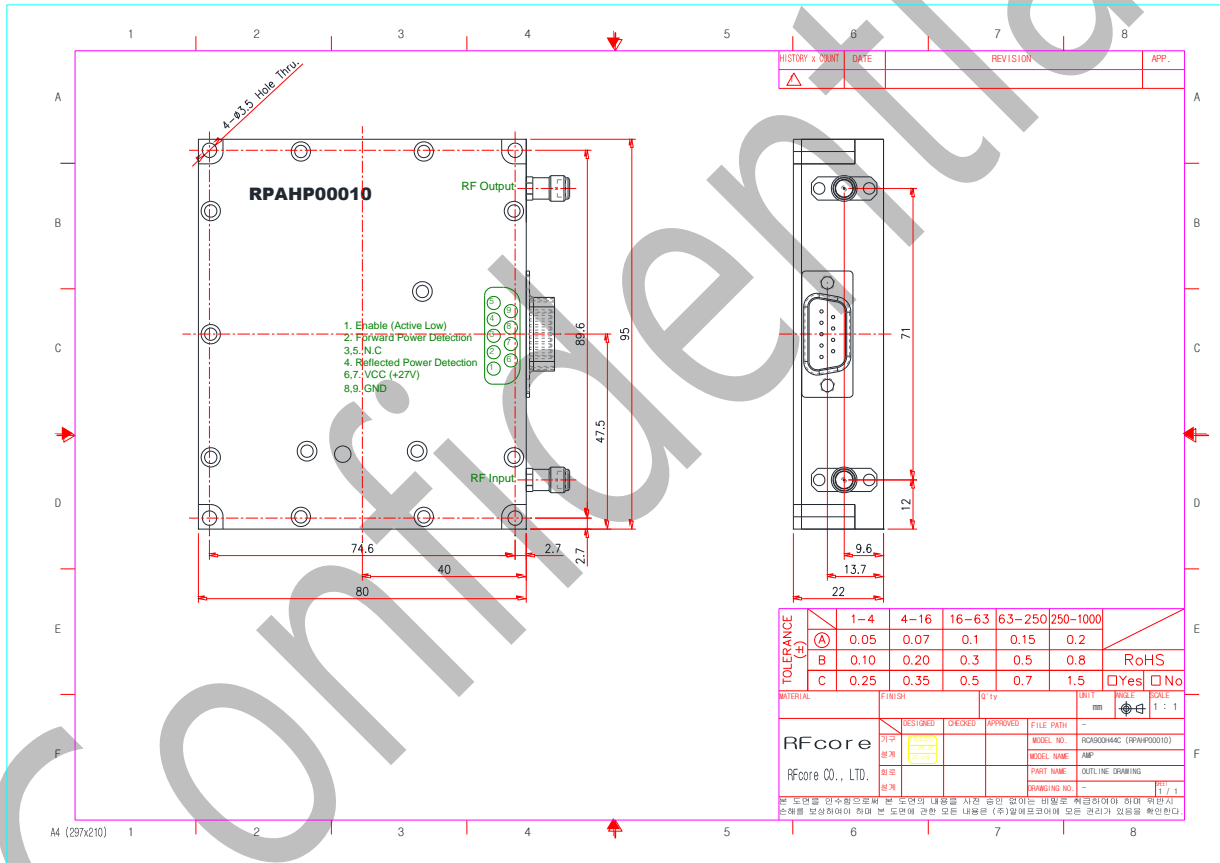
Product Name : RCA900H44C , Code Name : B2Y3SD3UI40

Doc. Name : Preliminary Short Spec.

MECHANICAL SPECIFICATIONS

Parameter	Specification	Remark
Dimension	80 x 95 x 22 mm	
RF Input / Output Connector	SMA – Female	
DC & Interface Connector	D – Sub 9 Pin Male	

MECHANICAL DRAWING



3

Created	Printed	Document Number	Revision	Manufacturer
2011/12/26	2017/1/12		C	RFcore co.,Ltd
File : RCA900H44C_E850 Short Spec.docx				

The Specifications is subject to change before finalization

Customer Service: Tel. 82-31-708-7575

Email: sales@rfcore.com

http://www.rfcore.com