

Band-Specific High Power Amplifier

Product Name : RCA900H41C

Doc. Name : Preliminary Short Spec.

<p>Preliminary Short Specification for RCA900H41C</p>

1

<p>RESTRICTION ON USE, DUPLICATION, OR DISCLOSURE OF PROPRIETARY INFORMATION</p>

This document contains proprietary information, which is the sole property of RFcore co., LTD.
The document is submitted to the recipient for his use only.
By receiving this document the recipient undertakes not to duplicate the documents or to disclose in part of, or the whole of, any of the information contained herein to any third party without receiving beforehand, written permission from the submitting company.

Created	Printed	Document Number	Revision	Manufacturer
2013/7/26	2017/1/12		B	RFcore co.,Ltd
File : RCA900H41C Short Spec.docx				

The Specifications is subject to change before finalization

Customer Service: Tel. 82-31-708-7575

Email: sales@rfcore.com

<http://www.rfcore.com>

Band-Specific High Power Amplifier

Product Name : RCA900H41C

Doc. Name : Preliminary Short Spec.

ELECTRICAL SPECIFICATIONS		@ 50 Ohms load, 28 Vdc, Tc = 35 °C
Parameter	Specification	Remark
Frequency Range	925 ~ 960 MHz	
Saturated Output Power	41 dBm min.	@CW
Gain	38 dB min.	Input level = 0dBm
Gain Flatness	Peak to Peak 2.0 dB	Input level = -15dBm
Gain Stability	±1.0 dB	
Input / Output VSWR	Less than 1.5 : 1	
Maximum Input Power for no damage	7dBm	
DC Input Voltage	28 ± 1.0Vdc	
DC Current Consumption	1.3A typ.	@ Pout = 41 dBm
I/O Interface(D-Sub 9Pin Male)	1. Enable (Active Low)	Pulled-up @ 5V with 10kohm
	2. Forward Power Monitor	4.0±0.1@41dBm, slope : 0.1V/dB Vpin2 = 4.0-(41-Pout)x0.1±0.1V
	3. Temperature Monitor	VT= 10(mV) * Tc(°C) + 500(mV), Tc = Case Temperature± 5°C
	4. Reflected Power Monitor	Diode Detector
	5. VSWR Fail Alarm	Reflected power>36.5±1.5dBm @Fcenter
	6,7. Vcc	
	8,9. GND	

2

ENVIRONMENTAL SPECIFICATIONS		
Parameter	Specification	Remark
Operating Case Temperature	-20 ~ 70 °C	
Storage Temperature	-40 ~ 85 °C	

MECHANICAL SPECIFICATIONS		
Parameter	Specification	Remark
Dimension	80 x 95 x 20 mm	
Weight	Less than 235g	
RF Input / Output Connector	SMA Female	
Control Connector	D-Sub 9Pin Male	
Cooling	Adequate Heat-sink required	

Created	Printed	Document Number	Revision	Manufacturer
2013/7/26	2017/1/12		B	RFcore co.,Ltd
File : RCA900H41C Short Spec.docx				

The Specifications is subject to change before finalization

Customer Service: Tel. 82-31-708-7575

Email: sales@rfcore.com

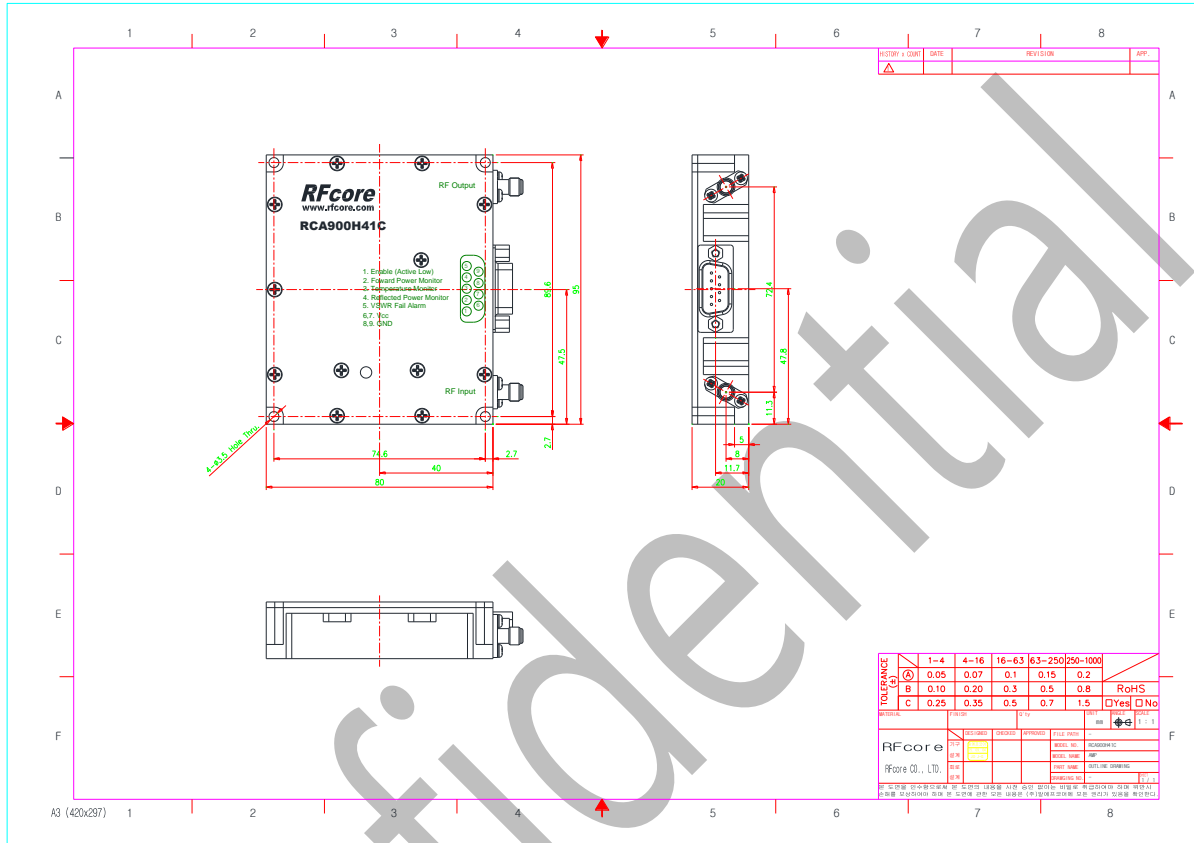
http://www.rfcore.com

Band-Specific High Power Amplifier

Product Name : RCA900H41C

Doc. Name : Preliminary Short Spec.

MECHANICAL DRAWING



3

Created	Printed	Document Number	Revision	Manufacturer
2013/7/26	2017/1/12		B	RFcore co.,Ltd
File : RCA900H41C Short Spec.docx				

The Specifications is subject to change before finalization

Customer Service: Tel. 82-31-708-7575

Email: sales@rfcore.com

http://www.rfcore.com