

Band-Specific High Power Amplifier

Product Name : RCA900H37A1

Doc. Name : General Spec.

RoHs
compliant

General Specification for RCA900H37A1

1

RESTRICTION ON USE, DUPLICATION, OR DISCLOSURE OF PROPRIETARY INFORMATION

This document contains proprietary information, which is the sole property of Rfcore co., LTD.

The document is submitted to the recipient for his use only.

By receiving this document the recipient undertakes not to duplicate the documents or to disclose in part of, or the whole of, any of the information contained herein to any third party without receiving before hand, written permission from the submitting company.

| Created | Printed | Document Number | Revision | Manufacturer |
|--|-----------|-----------------|----------|-----------------------|
| 2014/4/30 | 2017/1/12 | | B | RFcore co.,Ltd |
| File : 1AM0000211(RCA900H37A1) General Spec.docx | | | | |

The Specifications is subject to change before finalization

Customer Service: Tel. 82-31-708-7575

Email: sales@rfcore.com

<http://www.rfcore.com>

Band-Specific High Power Amplifier

Product Name : RCA900H37A1

Doc. Name : General Spec.

| ELECTRICAL SPECIFICATIONS | | @ 50 Ohms load, 28 Vdc, Tc = 35 °c |
|------------------------------------|--|--|
| Parameter | Specification | Remark |
| Frequency Range | 850 ~ 960 MHz | |
| Saturated Output Power | 5 W(37dBm) min. | CW |
| Gain @ Center frequency | 30 ± 1.0 dB | Input level = -15dBm |
| Gain Flatness | Peak to Peak 2.0 dB | Input level = -15dBm |
| Input VSWR | Less than 1.5 : 1 | |
| Input Power for rated output power | 10 dBm | |
| Maximum Input Power for no damage | 13 dBm | |
| Enable/Disable Switching Time | Less than 10 uS | |
| DC Input Voltage | 28 ± 1.0Vdc, 5 ± 1.0Vdc | |
| DC Current Consumption(+28V) | 700 mA max. | 480 mA typ. |
| DC Current Consumption(+5V) | 200 mA max. | 140 mA typ. |
| RF Input Signal Format | CW | |
| I/O Map(Micro D-SUB 9Pin) | <ol style="list-style-type: none"> 1. GND 2. DC +5V 3. DC +28V 4. Enable 5. Reflected Power Monitor 6. Forward Power Monitor 7. N.C 8. N.C 9. N.C | Pulled – up with 10Kohm Open or High(DC +5V) w/o EMI filter(applys capacitors 10pF and 33pF instead of EMI filter) |

2

| ENVIRONMENTAL SPECIFICATIONS | | |
|------------------------------|---------------|--------|
| Parameter | Specification | Remark |
| Operating Case Temperature | -20 ~ 75 °C | |
| Storage Temperature | -40 ~ 85 °C | |

| | | | | |
|--|-----------|-----------------|----------|-----------------------|
| Created | Printed | Document Number | Revision | Manufacturer |
| 2014/4/30 | 2017/1/12 | | B | RFcore co.,Ltd |
| File : 1AM0000211(RCA900H37A1) General Spec.docx | | | | |

The Specifications is subject to change before finalization

Customer Service: Tel. 82-31-708-7575

Email: sales@rfcore.com

http://www.rfcore.com

Band-Specific High Power Amplifier

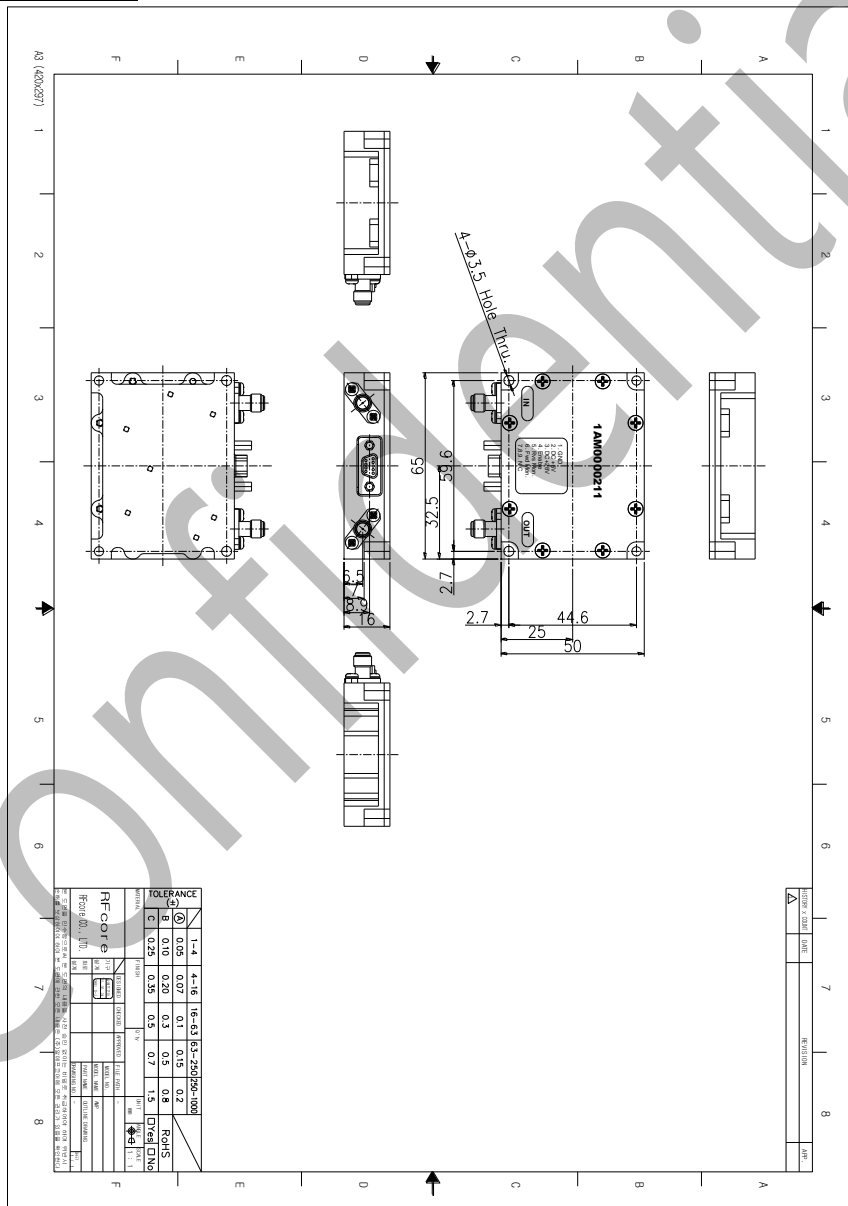
Product Name : RCA900H37A1

Doc. Name : General Spec.

MECHANICAL SPECIFICATIONS

| Parameter | Specification | Remark |
|-----------------------------|-----------------------------|--------|
| Dimension | 50 x 65 x 16 mm | |
| Weight | Less than 100 g | |
| RF Input / Output Connector | SMA – Female | |
| Cooling | Adequate Heat-sink required | |

MECHANICAL DRAWING



DRAWING REFERNECE: This is subject to change without notice.

| Created | Printed | Document Number | Revision | Manufacturer |
|-----------|-----------|-----------------|----------|----------------|
| 2014/4/30 | 2017/1/12 | | B | RFcore co.,Ltd |

File : 1AM0000211(RCA900H37A1) General Spec.docx

The Specifications is subject to change before finalization

Customer Service: Tel. 82-31-708-7575

Email: sales@rfcore.com

http://www.rfcore.com