

Broadband High Power Amplifier

Product Name : RCA08-10H44CWC, Code Name : B6Y6SD3UI40

Doc. Name : General Spec.

<p style="text-align: center;">General Specification for RCA08-10H44CWC</p>

1

<p style="text-align: center;">RESTRICTION ON USE, DUPLICATION, OR DISCLOSURE OF PROPRIETARY INFORMATION</p>

This document contains proprietary information, which is the sole property of RFcore co., LTD.

The document is submitted to the recipient for his use only.

By receiving this document the recipient undertakes not to duplicate the documents or to disclose in part of, or the whole of, any of the information contained herein to any third party without receiving before hand, written permission from the submitting company.

Created	Printed	Document Number	Revision	Manufacturer
2013/1/31	2017/1/12		C	RFcore co.,Ltd
File : RCA08-10H44CWC General Spec.docx				

The Specifications is subject to change before finalization

Customer Service: Tel. 82-31-708-7575

Email: sales@rfcore.com

<http://www.rfcore.com>

Broadband High Power Amplifier

Product Name : RCA08-10H44CWC, Code Name : B6Y6SD3UI40

Doc. Name : General Spec.

ELECTRICAL SPECIFICATIONS		@ 50 Ohms load, 27 Vdc, Tc = 35 °C
Parameter	Specification	Remark
Frequency Range	800 ~ 1000 MHz	
Saturated Output Power	44 dBm min.	@ CW
Small Signal Gain	40 dB min.	Input Level = - 15 dBm
Small Signal Gain Flatness	Peak to Peak 2.5 dB	Input Level = - 15 dBm
Maximum Input Power for no damage	7 dBm max.	
Input / Output VSWR	Less than 1.5 : 1	
DC Input Voltage	27 ± 1.0 Vdc	
Current Consumption	3.5 A max 2.8 A typ.	
I/O Interface(D-Sub 9Pin Male)	1. Temperature Monitor	VT = 0.02 * Tc + 1.0 (V) , Tc is Case Temperature in degC±5°C
	2. Forward Power Monitor	4.0±0.2V@44dBm, slope : 0.1V/dB Vpin2 = 4.0-(44-Pout)x0.1±0.2V
	3. GND	
	4. Reflected Power Monitor	Diode Detector
	5. VSWR Fail Alarm	Alarm : Reflected power = 38~41dBm @Fcenter
	6. Vcc	
	7. Vcc	
	8. GND	
	9. Enable (Active Low)	Pulled-up @ 5V with 10kohm

ENVIRONMENTAL SPECIFICATIONS		
Parameter	Specification	Remark
Operating Case Temperature	-20 ~ +60 °C	
Storage Temperature	-40 ~ +85 °C	

MECHANICAL SPECIFICATIONS		
Parameter	Specification	Remark
Dimension	135 * 100 * 22 mm	
RF Input / Output Connector	SMA Female	
Control Connector	D-Sub 9Pin Male	
Cooling	Adequate Heat-sink required	

Created	Printed	Document Number	Revision	Manufacturer
2013/1/31	2017/1/12		C	RFcore co.,Ltd
File : RCA08-10H44CWC General Spec.docx				

The Specifications is subject to change before finalization

Customer Service: Tel. 82-31-708-7575

Email: sales@rfcore.com

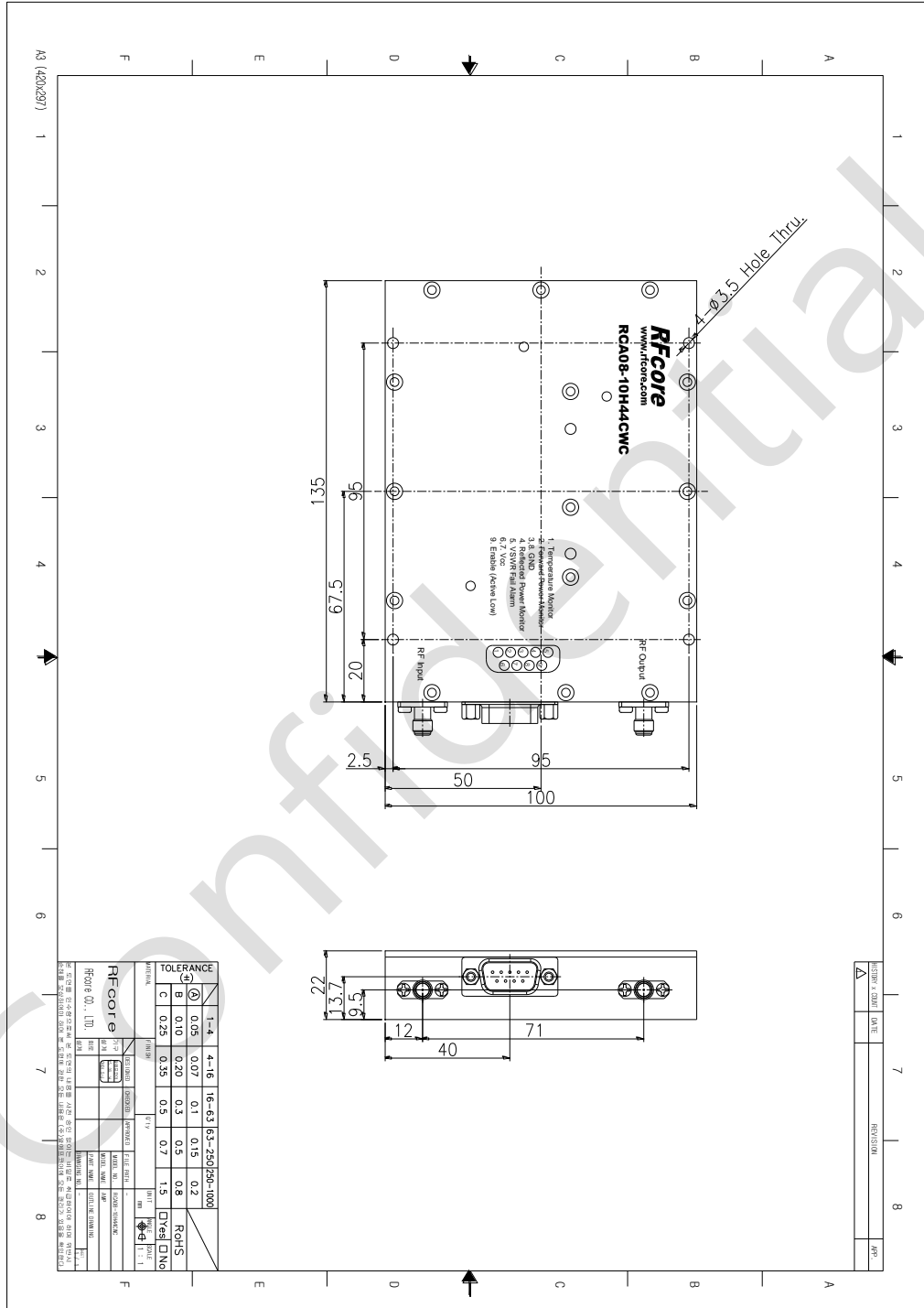
http://www.rfcore.com

Broadband High Power Amplifier

Product Name : RCA08-10H44CWC, Code Name : B6Y6SD3UI40

Doc. Name : General Spec.

MECHANICAL DRAWING



Created	Printed	Document Number	Revision	Manufacturer
2013/1/31	2017/1/12		C	RFcore co.,Ltd
File : RCA08-10H44CWC General Spec.docx				

The Specifications is subject to change before finalization

Customer Service: Tel. 82-31-708-7575

Email: sales@rfcore.com

http://www.rfcore.com