

# Band-Specific High Power Amplifier

Product Name : RCA08-10H42CW

Doc. Name : General Spec.

---

<p style="text-align: center;"><b>General Specification</b> for <b>RCA08-10H42CW</b></p>
--

1

---

<p style="text-align: center;"><b>RESTRICTION ON USE, DUPLICATION, OR DISCLOSURE OF PROPRIETARY INFORMATION</b></p> <p>This document contains proprietary information, which is the sole property of Rfcore co., LTD. The document is submitted to the recipient for his use only. By receiving this document the recipient undertakes not to duplicate the documents or to disclose in part of, or the whole of, any of the information contained herein to any third party without receiving beforehand, written permission from the submitting company.</p>
--

Created	Printed	Document Number	Revision	Manufacturer
2013/1/31	2017/1/12		B	<b>Rfcore co.,Ltd</b>
File : RCA08-10H42CW General Spec.docx				

*The Specifications is subject to change before finalization*

Customer Service: Tel. 82-31-708-7575

Email: [sales@rfcore.com](mailto:sales@rfcore.com)

<http://www.rfcore.com>

# Band-Specific High Power Amplifier

Product Name : RCA08-10H42CW

Doc. Name : General Spec.

ELECTRICAL SPECIFICATIONS		@ 50 Ohms load, 28 Vdc, Tc = 35 °C
Parameter	Specification	Remark
Frequency Range	800 ~ 1000 MHz	
Saturated Output Power	42 dBm min.	@ CW
Small Signal Gain	38 dB min.	Input level = -15dB
Small Signal Gain Flatness	Peak to Peak 2.0 dB	Input level = -15dB
Input / Output VSWR	Less than 1.5 : 1	
Maximum Input Power for no damage	7 dBm max.	
DC Input Voltage	27 ± 1.0Vdc	
Current Consumption	3.0 A max. 2.2 A typ.	@ Pout = 42 dBm
I/O Interface (D-Sub 9Pin Male)	1. Enable (Active low) 2. Forward Power Monitor 3. Do not connect 4. Reflected Power Monitor 5. VSWR Fail Alarm 6,7 Vcc 8,9 GND	Pulled-up@5V with 10kΩ 4.0±0.2V@42dBm, slope : 0.1V/dB Vpin2 = 4.0-(42-Pout)x0.1±0.2V Diode Detector Alarm : Reflected power >36dBm @Fcenter

2

ENVIRONMENTAL SPECIFICATIONS		
Parameter	Specification	Remark
Operating Case Temperature	-20 ~ +60 °C	
Storage Temperature	-40 ~ +85 °C	

MECHANICAL SPECIFICATIONS		
Parameter	Specification	Remark
Dimension	80 x 95 x 22 mm	
RF Input / Output Connector	SMA Female	
Control Connector	D-Sub 9Pin Male	
Cooling	Adequate Heat-sink required	

Created	Printed	Document Number	Revision	Manufacturer
2013/1/31	2017/1/12		B	<b>RFcore co.,Ltd</b>
File : RCA08-10H42CW General Spec.docx				

The Specifications is subject to change before finalization

Customer Service: Tel. 82-31-708-7575

Email: sales@rfcore.com

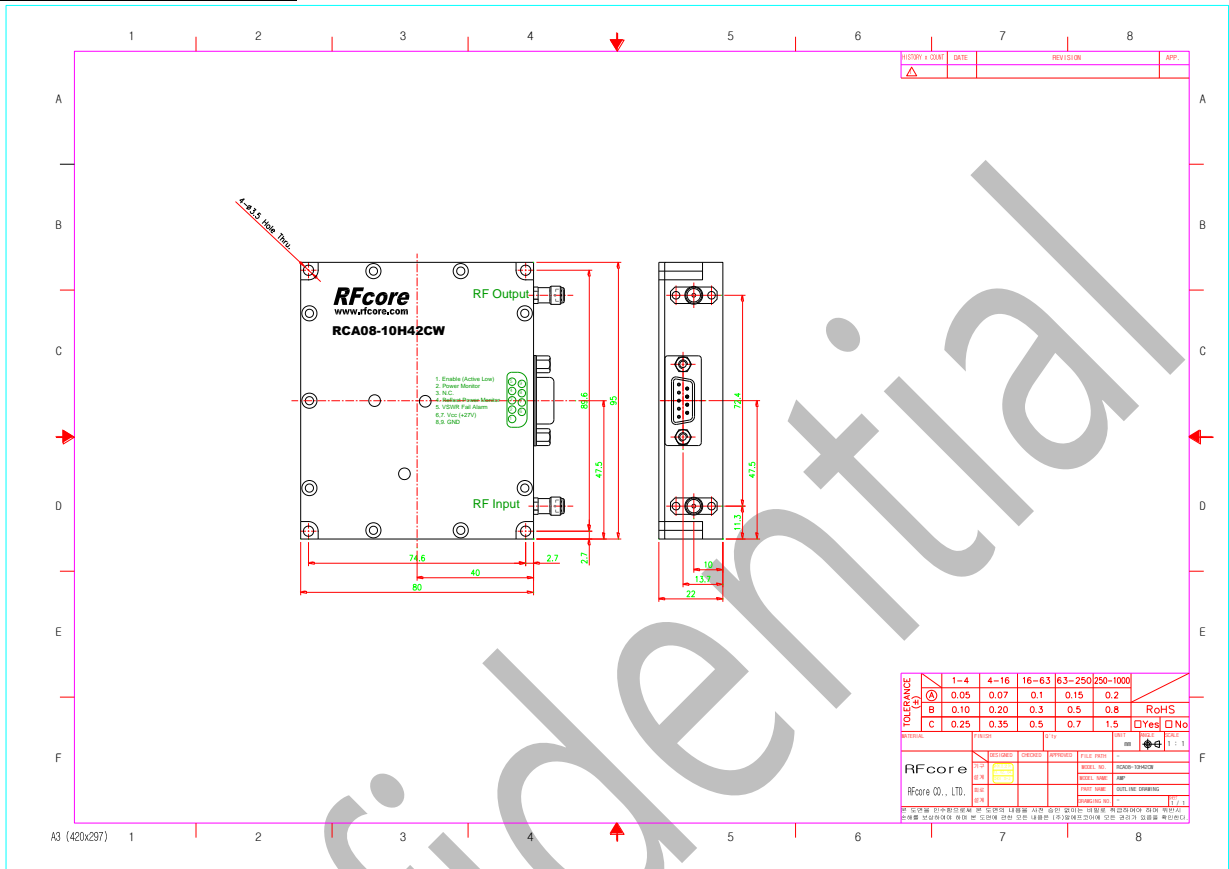
http://www.rfcore.com

# Band-Specific High Power Amplifier

Product Name : RCA08-10H42CW

Doc. Name : General Spec.

## MECHANICAL DRAWING



3

Created	Printed	Document Number	Revision	Manufacturer
2013/1/31	2017/1/12		B	RFcore co.,Ltd
File : RCA08-10H42CW General Spec.docx				

The Specifications is subject to change before finalization

Customer Service: Tel. 82-31-708-7575

Email: sales@rfcore.com

http://www.rfcore.com